

Data sheet

17216.8 SQI 4/7 YE



Insulated cross-connector, No. of poles: 7, Mounting type: Plug in, Width: 41.8 mm, Rated cross-section: 4 mm², Colour: Yellow

RAL: 1026

Business data

Article number	<u>17216.8</u>
Article name	SQI 4/7 YE
GTIN (EAN)	4044211148690
Packaging unit	20
Quantity unit	PC
Weight per piece (not including packaging)	5 g
Weight per piece (including packaging)	5.1 g
Unit of weight	G
Customs number	85389099
Country of origin	DE
Prio-Article	17216.8
Product description	Insulated cross-connector

Technical data

Dimensions

Length	4 mm
Width	41.8 mm
Height	23 mm
Pitch size	6 mm

Ratings

Voltage with partition, max.	1000 V
Voltage without partition, max.	1000 V
Rated current	32 A
Current load, max.	41 A
Rated cross-section	4 mm ²
Contamination degree	2

Connection data

No. of poles	7
--------------	---

Materials

Material	Bronze
Insulation housing	Polyamide 6.6
Flammability class UL 94	V-2
Working temperature, min.	-40 °C
Working temperature, max.	105 °C

Further technical data

Mounting type	Plug in
Insulation available	✓
Touch protection is available	✓
Number of bridged terminals	7

Environmental Product Compliance

REACH Conform	yes
REACH Reference date	2023-06-14, 2024-01-23
REACH Candidate Substance Note	No
RoHS Conform	yes

Data sheet

17216.8 SQI 4/7 YE



Media

Accessories

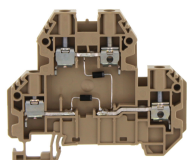
Insulation cap for cross-connector



Insulating cap, Colour: Yellow

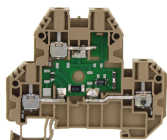
Article number	Article name	GTIN (EAN)	Packaging unit
<u>17200.8</u>	SQIK 2,5-10 YE	4044211148539	20

##INVERSE##CONTA-CONNECT



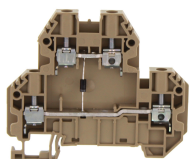
Double-level terminal with electronic components, Screw connection, Mounting type: Mounting rail TS 35/7.5, Rated cross-section: 4 mm², Width: 6.1 mm, Colour: Beige

Article number	Article name	GTIN (EAN)	Packaging unit
<u>17566.2</u>	SRKD 4/D5 BG	4044211234669	100 ST



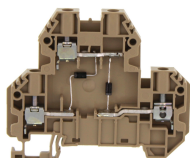
Double-level terminal with electronic components, Screw connection, Mounting type: Mounting rail TS 35/7.5, Rated cross-section: 4 mm², Width: 6.1 mm, Colour: Beige

Article number	Article name	GTIN (EAN)	Packaging unit
<u>17569.2</u>	SRKD 4/RD5 BG	4044211234690	100 ST



Double-level terminal with electronic components, Screw connection, Mounting type: Mounting rail TS 35/7.5, Rated cross-section: 4 mm², Width: 6.1 mm, Colour: Beige

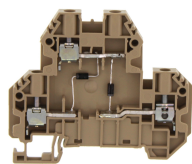
Article number	Article name	GTIN (EAN)	Packaging unit
<u>17563.2</u>	SRKD 4/D2 BG	4044211234638	100 ST



Double-level terminal with electronic components, Screw connection, Mounting type: Mounting rail TS 35/7.5, Rated cross-section: 4 mm², Width: 6.1 mm, Colour: Beige

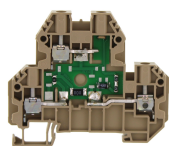
Article number	Article name	GTIN (EAN)	Packaging unit
<u>17564.2</u>	SRKD 4/D3 BG	4044211234645	100 ST

##INVERSE##CONTA-CONNECT



Double-level terminal with electronic components, Screw connection, Mounting type:Mounting rail TS 35/7.5, Rated cross-section: 4 mm², Width: 6.1 mm, Colour: Beige

Article number	Article name	GTIN (EAN)	Packaging unit
17565.2	SRKD 4/D4 BG	4044211234652	100 ST



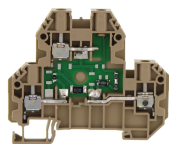
Double-level terminal with electronic components, Screw connection, Mounting type:Mounting rail TS 35/7.5, Rated cross-section: 4 mm², Width: 6.1 mm, Colour: Beige

Article number	Article name	GTIN (EAN)	Packaging unit
17570.2	SRKD 4/LED1(RD)/24V DC BG	4044211234706	100 ST



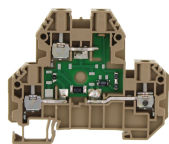
Double-level terminal with electronic components, Screw connection, Mounting type:Mounting rail TS 35/7.5, Rated cross-section: 4 mm², Width: 6.1 mm, Colour: Beige

Article number	Article name	GTIN (EAN)	Packaging unit
17571.2	SRKD 4/LED1(GN)/24V DC BG	4044211234713	100 ST



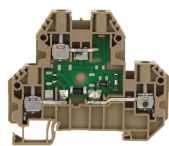
Double-level terminal with electronic components, Screw connection, Mounting type:Mounting rail TS 35/7.5, Rated cross-section: 4 mm², Width: 6.1 mm, Colour: Beige

Article number	Article name	GTIN (EAN)	Packaging unit
17572.2	SRKD 4/LED2(RD)/24V DC BG	4044211234720	100 ST



Double-level terminal with electronic components, Screw connection, Mounting type:Mounting rail TS 35/7.5, Rated cross-section: 4 mm², Width: 6.1 mm, Colour: Beige

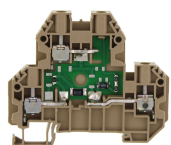
Article number	Article name	GTIN (EAN)	Packaging unit
17575.2	SRKD 4/LED3(GN)/24V DC BG	4044211234751	100 ST



Double-level terminal with electronic components, Screw connection, Mounting type:Mounting rail TS 35/7.5, Rated cross-section: 4 mm², Width: 6.1 mm, Colour: Beige

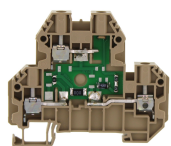
Article number	Article name	GTIN (EAN)	Packaging unit
17576.2	SRKD 4/LED4(RD)/24V DC BG	4044211234768	100 ST

##INVERSE##CONTA-CONNECT



Double-level terminal with electronic components, Screw connection, Mounting type:Mounting rail TS 35/7.5, Rated cross-section: 4 mm², Width: 6.1 mm, Colour: Beige

Article number	Article name	GTIN (EAN)	Packaging unit
<u>17578.2</u>	SRKD 4/LED5(RD)/24V AC BG	4044211234782	100 ST



Double-level terminal with electronic components, Screw connection, Mounting type:Mounting rail TS 35/7.5, Rated cross-section: 4 mm², Width: 6.1 mm, Colour: Beige

Article number	Article name	GTIN (EAN)	Packaging unit
<u>17579.2</u>	SRKD 4/LED5(RD)/230V AC BG	4044211234799	100 ST



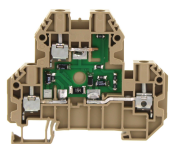
Double-level terminal with electronic components, Screw connection, Mounting type:Mounting rail TS 35/7.5, Rated cross-section: 4 mm², Width: 6.1 mm, Colour: Beige

Article number	Article name	GTIN (EAN)	Packaging unit
<u>17561.2</u>	SRKD 4/D0 BG	4044211234614	100 ST



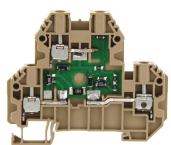
Double-level terminal with electronic components, Screw connection, Mounting type:Mounting rail TS 35/7.5, Rated cross-section: 4 mm², Width: 6.1 mm, Colour: Beige

Article number	Article name	GTIN (EAN)	Packaging unit
<u>17562.2</u>	SRKD 4/D1 BG	4044211234621	100 ST



Double-level terminal with electronic components, Screw connection, Mounting type:Mounting rail TS 35/7.5, Rated cross-section: 4 mm², Width: 6.1 mm, Colour: Beige

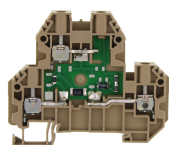
Article number	Article name	GTIN (EAN)	Packaging unit
<u>17567.2</u>	SRKD 4/D6 BG	4044211234676	100 ST



Double-level terminal with electronic components, Screw connection, Mounting type:Mounting rail TS 35/7.5, Rated cross-section: 4 mm², Width: 6.1 mm, Colour: Beige

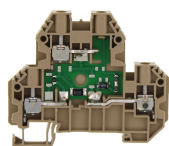
Article number	Article name	GTIN (EAN)	Packaging unit
<u>17568.2</u>	SRKD 4/RD1 BG	4044211234683	100 ST

##INVERSE##CONTA-CONNECT



Double-level terminal with electronic components, Screw connection, Mounting type: Mounting rail TS 35/7.5, Rated cross-section: 4 mm², Width: 6.1 mm, Colour: Beige

Article number	Article name	GTIN (EAN)	Packaging unit
<u>17573.2</u>	SRKD 4/LED2(GN)/24V DC BG	4044211234737	100 ST



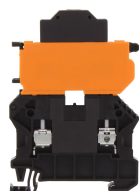
Double-level terminal with electronic components, Screw connection, Mounting type: Mounting rail TS 35/7.5, Rated cross-section: 4 mm², Width: 6.1 mm, Colour: Beige

Article number	Article name	GTIN (EAN)	Packaging unit
<u>17574.2</u>	SRKD 4/LED3(RD)/24V DC BG	4044211234744	100 ST



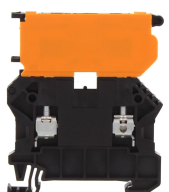
Double-level terminal with electronic components, Screw connection, Mounting type: Mounting rail TS 35/7.5, Rated cross-section: 4 mm², Width: 6.1 mm, Colour: Beige

Article number	Article name	GTIN (EAN)	Packaging unit
<u>17577.2</u>	SRKD 4/LED4(GN)/24V DC BG	4044211234775	100 ST



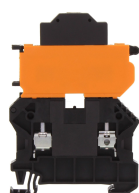
Fuse-disconnect terminal, Screw connection, Mounting type: Mounting rail TS 35/7.5, Rated cross-section: 4 mm², Width: 6.1 mm, Colour: Black

Article number	Article name	GTIN (EAN)	Packaging unit
<u>17172.4</u>	SSIK 4/2A/LED 30-60V AC/DC BK	4044211180447	25 ST



Fuse-disconnect terminal, Screw connection, Mounting type: Mounting rail TS 35/7.5, Rated cross-section: 4 mm², Width: 6.1 mm, Colour: Black

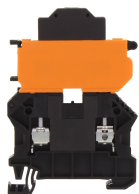
Article number	Article name	GTIN (EAN)	Packaging unit
<u>17150.4</u>	SSIK 4/2A BK	4044211179816	50 ST



Fuse-disconnect terminal, Screw connection, Mounting type: Mounting rail TS 35/7.5, Rated cross-section: 4 mm², Width: 6.1 mm, Colour: Black

Article number	Article name	GTIN (EAN)	Packaging unit
<u>17171.4</u>	SSIK 4/2A/LED 12-30V AC/DC BK	4044211180430	25 ST

##INVERSE##CONTA-CONNECT



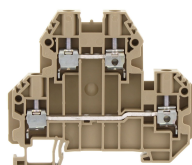
Fuse-disconnect terminal, Screw connection, Mounting type: Mounting rail TS 35/7.5, Rated cross-section: 4 mm², Width: 6.1 mm, Colour: Black

Article number	Article name	GTIN (EAN)	Packaging unit
<u>17173.4</u>	SSIK 4/2A/LED 110-250V AC/DC BK	4044211180454	25 ST



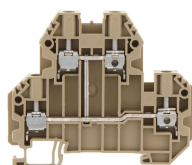
Fuse-disconnect terminal, Screw connection, Mounting type: Mounting rail TS 35/7.5, Rated cross-section: 4 mm², Width: 6.1 mm, Colour: Black

Article number	Article name	GTIN (EAN)	Packaging unit
<u>17174.4</u>	SSIK 4/2A/LED 500V AC/DC BK	4044211180461	25 ST



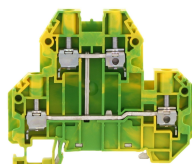
Double-level terminal, Screw connection, Mounting type: Mounting rail TS 35/7.5, Rated cross-section: 4 mm², Width: 6.1 mm, Colour: Beige

Article number	Article name	GTIN (EAN)	Packaging unit
<u>17185.2</u>	SRKD 4 BG	4044211190712	100



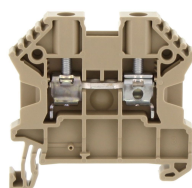
Double-level terminal, Screw connection, Mounting type: Mounting rail TS 35/7.5, Rated cross-section: 4 mm², Width: 6.1 mm, Colour: Beige

Article number	Article name	GTIN (EAN)	Packaging unit
<u>17186.2</u>	SRKD 4/SV BG	4044211190736	100



Protective-earth double-level terminal, Screw connection, Mounting type: Mounting rail TS 35/7.5, Rated cross-section: 4 mm², Width: 6.1 mm, Colour: Green-yellow

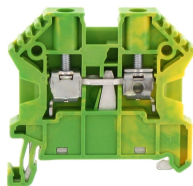
Article number	Article name	GTIN (EAN)	Packaging unit
<u>17187.2</u>	SSLD 4 GNYE	4044211190750	100 ST



Feed-through terminal, Screw connection, Mounting type: Mounting rail TS 35/7.5, Rated cross-section: 4 mm², Width: 6 mm, Colour: Beige

Article number	Article name	GTIN (EAN)	Packaging unit
<u>17106.2</u>	SRK 4/2A/Z BG	4044211141714	100 ST

##INVERSE##CONTA-CONNECT



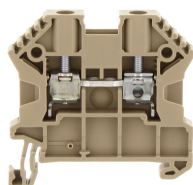
Protective earth terminal, Screw connection, Mounting type: Mounting rail TS 35/7.5, Rated cross-section: 4 mm², Width: 6 mm, Colour: Green-yellow

Article number	Article name	GTIN (EAN)	Packaging unit
<u>17107.2</u>	SSL 4/2A GNYE	4044211141721	100 ST



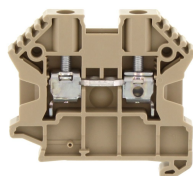
Feed-through terminal, Screw connection, Mounting type: Mounting rail TS 35/7.5, Rated cross-section: 4 mm², Width: 6 mm, Colour: Black-yellow

Article number	Article name	GTIN (EAN)	Packaging unit
<u>17155.2</u>	SRK 4/2A/PE BKYE	4044211186692	100 ST



Feed-through terminal, Screw connection, Mounting type: Mounting rail TS 35/7.5, Rated cross-section: 4 mm², Width: 6 mm, Colour: Beige

Article number	Article name	GTIN (EAN)	Packaging unit
<u>17104.2</u>	SRK 4/2A BG	4044211141691	100



Feed-through terminal, Screw connection, Mounting type: Mounting rail TS 35/7.5, Rated cross-section: 4 mm², Width: 6 mm, Colour: Beige

Article number	Article name	GTIN (EAN)	Packaging unit
<u>17105.2</u>	SRK B 4/2A BG	4044211141707	100 ST