



Cover, Length: 51.5 mm, Width: 18 mm, Colour: White

RAL: 9010

Business data

Article number	<u>17284.7</u>
Article name	SAD 1/18/B WH
GTIN (EAN)	4044211205539
Packaging unit	10
Quantity unit	PC
Weight per piece (not including packaging)	1.8 g
Weight per piece (including packaging)	1.92 g
Unit of weight	G
Customs number	85389099
Country of origin	DE
Product description	Cover
Colour	White

Technical data

Dimensions

Length	51.5 mm
Width	18 mm
Height	6 mm

Materials

Material	Polyamide 6.6
Flammability class UL 94	V-2
Working temperature, min.	-40 °C
Working temperature, max.	105 °C

Environmental Product Compliance

REACH Conform	yes
REACH Reference date	2024-01-23
REACH Candidate Substance Note	No
RoHS Conform	yes

Media

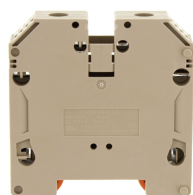
Accessories

##INVERSE##CONTA-CONNECT



Protective earth terminal, Screw connection, Mounting type: Mounting rail TS 35/7.5, Rated cross-section: 50 mm², Width: 18.5 mm, Colour: Green-yellow

Article number	Article name	GTIN (EAN)	Packaging unit
<u>17158.2</u>	SSL 50/2A GNYE	4044211186739	10 ST



Feed-through terminal, Screw connection, Mounting type: Mounting rail TS 35/7.5, Rated cross-section: 50 mm², Width: 18.5 mm, Colour: Beige

Article number	Article name	GTIN (EAN)	Packaging unit
<u>17156.2</u>	SRK 50/2A BG	4044211186715	10