

Data sheet

1740.0 SVB 80 LG



Screw-distributor block, Screw connection, Mounting type: Mounting rail TS 35/7.5 and mounting surface, Rated cross-section of input: 16 mm², Rated cross-section of output: 6 and 16 mm², Colour: Light grey

RAL: 9018

Business data

Article number	<u>1740.0</u>
Article name	SVB 80 LG
GTIN (EAN)	4044211143473
Packaging unit	1
Quantity unit	PC
Weight per piece (not including packaging)	63 g
Weight per piece (including packaging)	71 g
Unit of weight	G
Customs number	85369010
Country of origin	FR
Prio-Article	1740.0
Product description	Screw-type distribution block

Data sheet

1740.0 SVB 80 LG

Technical data

Dimensions

Length	66 mm
Width	27 mm
Height	47 mm
Height TS 35/7.5	50 mm

Ratings

Rated voltage AC	1000 V
Rated voltage DC	1500 V
Rated current Cu	80 A
Input: rated cross section	16 mm ²
Output A: rated cross-section	16 mm ²
Output B: rated cross-section	6 mm ²
Rated impulse voltage	2,5 kV
Overvoltage category	III
Contamination degree	3
Maximum power dissipation for nominal condition	2.56 W

Technical data

Connection data

Connection principle	Screw connection
Connections	7
Number of inputs	1
Number of outputs A	2
Number of outputs B	4
Input: wire cross-section rigid, min.	2.5 mm ²
Input: wire cross-section rigid, max.	16 mm ²
Input: wire cross-section stranded, min.	2.5 mm ²
Input: wire cross-section stranded, max.	16 mm ²
Input: wire cross-section stranded, with wire-endferrules, min.	2.5 mm ²
Input: wire cross-section stranded, with wire-endferrules, max.	16 mm ²
Input: wire cross-section rigid AWG, min.	8
Input: wire cross-section rigid AWG, max.	4
Input: wire cross-section stranded AWG, min.	8
Input: wire cross-section stranded AWG, max.	4
Input: wire cross-section stranded, with wire-endferrules AWG, min.	8
Input: wire cross-section stranded, with wire-endferrules AWG, max.	4
Input: diameter	7 mm
Input: stripping length	12 mm
Input: screw head	Slotted / cross recess
Input: screw threading	M 5
Input: torque, min.	1.5 Nm
Input: torque, max.	3 Nm
Output A: wire cross-section rigid, min.	2.5 mm ²
Output A: wire cross-section rigid, max.	16 mm ²
Output A: wire cross-section stranded, min.	2.5 mm ²
Output A: wire cross-section stranded, max.	16 mm ²
Output A: wire cross-section stranded with wire-end ferrules, min.	2.5 mm ²
Output A: wire cross-section stranded with wire-end ferrules, max.	16 mm ²
Output A: wire cross-section AWG, min.	8
Output A: wire cross-section AWG, max.	4
Output A: diameter	7 mm ²
Output A: stripping length	12 mm
Output A: screw head	Slotted / cross recess
Output A: screw threading	M 5
Output A: torque, min.	1.5 Nm
Output A: torque, max.	3 Nm

Technical data

Materials

Insulation housing	Polyamide 6.6
Flammability class UL 94	V-0
Working temperature, min.	-40 °C
Working temperature, max.	120 °C

Further technical data

Mounting type	Mounting rail TS 35/7.5 and mounting surface
Short-circuit current resistance IPK (peak value)	2,7 kA
Short-circuit current resistance ICW over 1 s	1,9 kA
SCCR rating	100
Req. Series fuse class J	80 A

Environmental Product Compliance

REACH Conform	No
REACH Reference date	2023-06-14, 2024-01-23
REACH Candidate Substance Note	No
REACH CAS 1 Substance	LEAD
REACH CAS 1 Percent minimal	0.1 %
REACH CAS 1 Percent maximum	4 %
REACH CAS 1 Number	7439-92-1
RoHS Conform	yes
RoHS Exception rule	6c

Approvals

Standards and regulations

EAC approval	TR ZU 004/2011
--------------	----------------

EAC approval granted	yes
----------------------	-----

cUL Recognized

cUL approval	C22.2 No 158
--------------	--------------

cUL Usegroup B: rated voltage	600 V
-------------------------------	-------

cUL Usegroup B: rated current	80 A
-------------------------------	------

cUL Usegroup C: rated voltage	600 V
-------------------------------	-------

cUL Usegroup C: rated current	80 A
-------------------------------	------

cUL input: wire cross-section AWG, min.	8
---	---

cUL input: wire cross-section AWG, max.	4
---	---

cUL output A: wire cross-section AWG, min.	8
--	---

cUL output A: wire cross-section AWG, max.	4
--	---

cUL output B: wire cross-section AWG, min.	14
--	----

cUL output B: wire cross-section AWG, max.	10
--	----

cUL torque input	1.5 Nm
------------------	--------

cUL torque output	0.8 Nm
-------------------	--------

cUL wire material	Cu
-------------------	----

cUL Recognized	1
----------------	---

Data sheet

1740.0 SVB 80 LG

Approvals

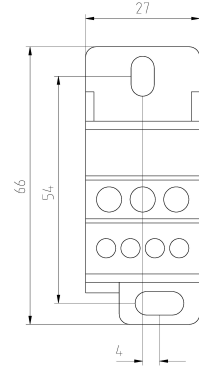
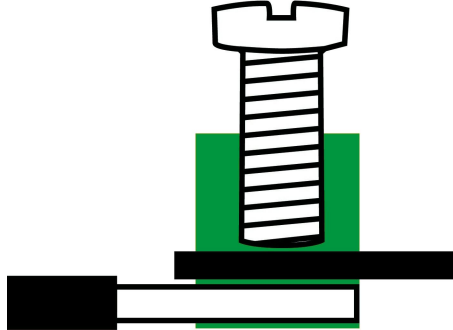
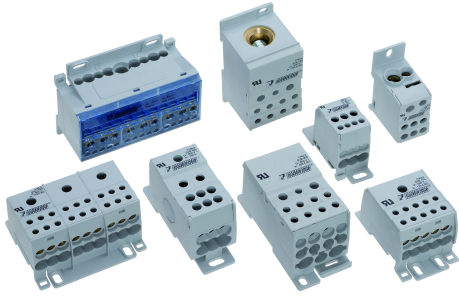
UL Recognized

UL approval	UL 1059
UL Usegroup B: rated voltage	600 V
UL Usegroup B: rated current	80 A
UL Usegroup C: rated voltage	600 V
UL Usegroup C: rated current	80 A
UL input: wire cross-section AWG, min.	8
UL input: wire cross-section AWG, max.	4
UL output A: wire cross-section AWG, min.	8
UL output A: wire cross-section AWG, max.	4
UL output B: wire cross-section AWG, min.	14
UL output B: wire cross-section AWG, max.	10
UL torque input	13.5 Lb In.
UL torque output	7.2 Lb In.
UL wire material	Cu
UL factory wiring	1
UL field wiring	1
UL overvoltage protection - req. Series fuse class J	80 A
UL SCCR rating	100 kA
UL Recognized	1

Data sheet

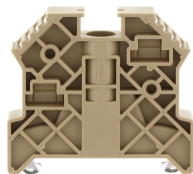
1740.0 SVB 80 LG

Media



Accessories

End stop



End stop, Mounting type: Mounting rail TS 35/7.5, Width: 9.5 mm, Colour: Beige

Article number	Article name	GTIN (EAN)	Packaging unit
<u>2828.0</u>	ES 35/K/ST BG	4044211055547	50

Screwdriver

Screwdriver with bare blade, Colour:



Article number	Article name	GTIN (EAN)	Packaging unit
<u>2290.0</u>	SDK 2,0x100	4044211050887	1 ST

Screwdriver with bare blade, Colour:



Article number	Article name	GTIN (EAN)	Packaging unit
<u>2289.0</u>	SDK 1,0x80	4044211050870	1 ST