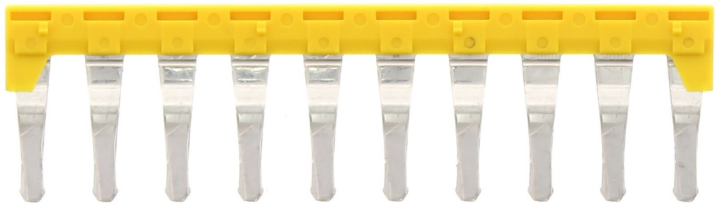


Data sheet

17410.8 FIQI 6-10/10 YE



Insulated cross-connector, No. of poles: 10, Mounting type: Plug in, Width: 78.6 mm, Colour: Yellow

RAL: 1026

Business data

| | |
|--|---------------------------|
| Article number | 17410.8 |
| Article name | FIQI 6-10/10 YE |
| GTIN (EAN) | 4044211177935 |
| Packaging unit | 10 |
| Quantity unit | PC |
| Weight per piece (not including packaging) | 11 g |
| Weight per piece (including packaging) | 11.15 g |
| Unit of weight | G |
| Customs number | 85389099 |
| Country of origin | DE |
| Product description | Insulated cross-connector |
| Colour | Yellow |

Technical data

Dimensions

| | |
|------------|---------|
| Length | 3.4 mm |
| Width | 78.6 mm |
| Pitch size | 8.1 mm |

Ratings

| | |
|----------------------|-------------------|
| Max. voltage | 800 V |
| Rated current | 41 A |
| Current load, max. | 41 A |
| Rated cross-section | 6 mm ² |
| Contamination degree | 2 |

Connection data

| | |
|--------------|----|
| No. of poles | 10 |
|--------------|----|

Materials

| | |
|---------------------------|---------------|
| Material | Copper alloy |
| Insulation housing | Polyamide 6.6 |
| Flammability class UL 94 | V-2 |
| Working temperature, min. | -40 °C |
| Working temperature, max. | 105 °C |

Further technical data

| | |
|-------------------------------|---------|
| Mounting type | Plug in |
| Insulation available | ✓ |
| Touch protection is available | ✓ |
| Number of bridged terminals | 10 |

Environmental Product Compliance

| | |
|--------------------------------|------------|
| REACH Conform | yes |
| REACH Reference date | 2023-06-14 |
| REACH Candidate Substance Note | No |
| RoHS Conform | yes |

Media

Accessories

##INVERSE##CONTA-CONNECT



Neutral-disconnect terminal, Push-in connection, Mounting type: Mounting rail TS 35/7.5, Rated cross-section: 10 mm², Width: 8.1 mm, Colour: Blue

| Article number | Article name | GTIN (EAN) | Packaging unit |
|----------------|--------------|---------------|----------------|
| <u>3274.5</u> | FNT 6-10 BU | 4044211138981 | 100 ST |



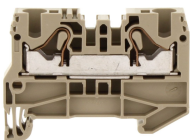
PE installation terminal, Push-in connection, Mounting type: Mounting rail TS 35/7.5, Rated cross-section: 10 mm², Width: 8.1 mm, Colour: Green-yellow

| Article number | Article name | GTIN (EAN) | Packaging unit |
|----------------|-------------------|---------------|----------------|
| <u>3217.2</u> | FSLI 6-10/3A GNYE | 4044211199944 | 50 ST |



Feed-through installation terminal, Push-in connection, Mounting type: Mounting rail TS 35/7.5, Rated cross-section: 10 mm², Width: 8.1 mm, Colour: Beige

| Article number | Article name | GTIN (EAN) | Packaging unit |
|----------------|-----------------|---------------|----------------|
| <u>3216.2</u> | FRKI 6-10/3A BG | 4044211199913 | 50 |



Feed-through installation terminal, Push-in connection, Mounting type: Mounting rail TS 35/7.5, Rated cross-section: 10 mm², Width: 8.1 mm, Colour: Beige

| Article number | Article name | GTIN (EAN) | Packaging unit |
|----------------|--------------|---------------|----------------|
| <u>3277.2</u> | FRKI 6-10 BG | 4044211139032 | 100 |