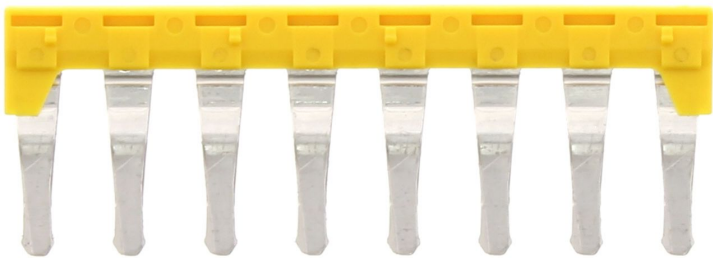


Data sheet

17418.8 FIQI 6-10/8 YE



Insulated cross-connector, No. of poles: 8, Mounting type: Plug in, Width: 62.4 mm, Colour: Yellow

RAL: 1026

Business data

Article number	17418.8
Article name	FIQI 6-10/8 YE
GTIN (EAN)	4044211178000
Packaging unit	10
Quantity unit	PC
Weight per piece (not including packaging)	9 g
Weight per piece (including packaging)	9.1 g
Unit of weight	G
Customs number	85389099
Country of origin	DE
Product description	Insulated cross-connector
Colour	Yellow

Technical data

Dimensions

Length	3.4 mm
Width	62.4 mm
Pitch size	8.1 mm

Ratings

Max. voltage	800 V
Rated current	41 A
Current load, max.	41 A
Rated cross-section	6 mm ²
Contamination degree	2

Connection data

No. of poles	8
--------------	---

Materials

Material	Copper alloy
Insulation housing	Polyamide 6.6
Flammability class UL 94	V-2
Working temperature, min.	-40 °C
Working temperature, max.	105 °C

Further technical data

Mounting type	Plug in
Insulation available	✓
Touch protection is available	✓
Number of bridged terminals	8

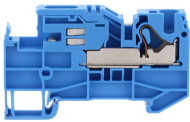
Environmental Product Compliance

REACH Conform	yes
REACH Reference date	2023-06-14
REACH Candidate Substance Note	No
RoHS Conform	yes

Media

Accessories

##INVERSE##CONTA-CONNECT



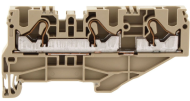
Neutral-disconnect terminal, Push-in connection, Mounting type: Mounting rail TS 35/7.5, Rated cross-section: 10 mm², Width: 8.1 mm, Colour: Blue

Article number	Article name	GTIN (EAN)	Packaging unit
<u>3274.5</u>	FNT 6-10 BU	4044211138981	100 ST



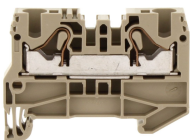
PE installation terminal, Push-in connection, Mounting type: Mounting rail TS 35/7.5, Rated cross-section: 10 mm², Width: 8.1 mm, Colour: Green-yellow

Article number	Article name	GTIN (EAN)	Packaging unit
<u>3217.2</u>	FSLI 6-10/3A GNYE	4044211199944	50 ST



Feed-through installation terminal, Push-in connection, Mounting type: Mounting rail TS 35/7.5, Rated cross-section: 10 mm², Width: 8.1 mm, Colour: Beige

Article number	Article name	GTIN (EAN)	Packaging unit
<u>3216.2</u>	FRKI 6-10/3A BG	4044211199913	50



Feed-through installation terminal, Push-in connection, Mounting type: Mounting rail TS 35/7.5, Rated cross-section: 10 mm², Width: 8.1 mm, Colour: Beige

Article number	Article name	GTIN (EAN)	Packaging unit
<u>3277.2</u>	FRKI 6-10 BG	4044211139032	100