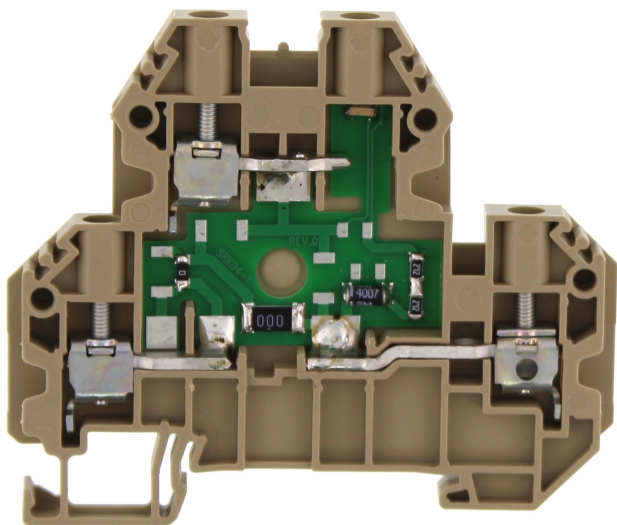


# Data sheet

## 17578.2 SRKD 4/LED5(RD)/24V AC BG



Double-level terminal with electronic components, Screw connection, Mounting type:Mounting rail TS 35/7.5, Rated cross-section: 4 mm², Width: 6.1 mm, Colour: Beige

### Business data

Article number	17578.2
Article name	SRKD 4/LED5(RD)/24V AC BG
GTIN (EAN)	4044211234782
Packaging unit	100
Quantity unit	PC
Weight per piece (not including packaging)	19.2 g
Weight per piece (including packaging)	20.15 g
Unit of weight	G
Customs number	85369010
Country of origin	BG
Product description	Double-level terminals with electronic components
Colour	Beige

### Technical data

#### Dimensions

Length	76 mm
Width	6.1 mm
Height TS 35/7.5	65 mm

#### Ratings

Rated voltage	1000 V
Rated cross-section	4 mm <sup>2</sup>
Rated impulse voltage	8 kV
Overvoltage category	III
Contamination degree	3

#### Connection data

Connection principle	Screw connection
Connection position	Lateral
Connections	2 x 2
Number of terminals per level	2
Number of levels	2
Wire cross-section single-core (rigid) / stranded, min.	0.2 mm <sup>2</sup>
Wire cross-section single core (rigid)/stranded, max.	6 mm <sup>2</sup>
Wire cross-section stranded, min.	0.2 mm <sup>2</sup>
Wire cross-section stranded, max.	6 mm <sup>2</sup>
Wire cross-section stranded with wire-end ferrules, min.	0.2 mm <sup>2</sup>
Wire cross-section stranded with wire-end ferrules, max.	4 mm <sup>2</sup>
Wire cross-section AWG, min.	26
Wire cross-section AWG, max.	10
Stripping length	10 mm
Screw head	Slotted
Screw threading	M 3
Tightening torque, min.	0.5 Nm
Tightening torque, max.	1 Nm

### Technical data

#### Materials

Insulation housing	Polyamide 6.6
Flammability class UL 94	V-0
Working temperature, min.	-40 °C
Working temperature, max.	120 °C

#### Further technical data

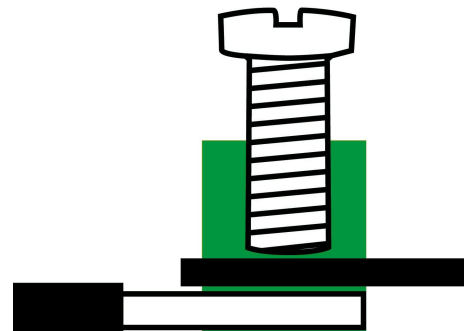
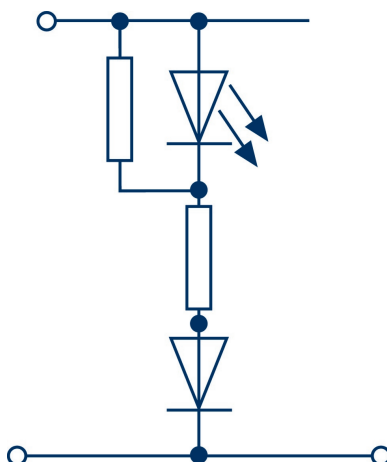
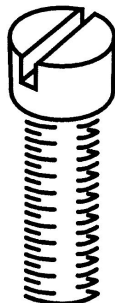
Mounting type	Mounting rail TS 35/7,5
Gauge plug acc. to EN 60 947-1	A4
Number of cross-connection channels	3
End plate required	✓
Number of test pick-off options	1
Voltage illuminated display	24 AC V
Cross-current via illuminated display	5 mA
Colour of lamp	Red

#### Environmental Product Compliance

REACH Conform	yes
REACH Reference date	2023-06-14
REACH Candidate Substance Note	No
RoHS Conform	yes

### Media

**M3**



### Accessories

#### End plate



End plate, Width: 1.5 mm, Colour: Beige

Article number	Article name	GTIN (EAN)	Packaging unit
<u>17292.2</u>	SAPD 2,5-4 BG	4044211190828	20

#### End stop



End stop, Mounting type: Mounting rail TS 35/7.5 and TS 35/15, Width: 8 mm, Colour: Beige

Article number	Article name	GTIN (EAN)	Packaging unit
<u>17250.2</u>	SES 35 BG	4044211178253	50

#### Insulated cross-connector



Insulated cross-connector, No. of poles: 3, Mounting type: Plug in, Width: 17.4 mm, Rated cross-section: 4 mm<sup>2</sup>, Colour: Yellow

Article number	Article name	GTIN (EAN)	Packaging unit
<u>17212.8</u>	SQI 4/3 YE	4044211148652	50



Insulated cross-connector, No. of poles: 2, Mounting type: Plug in, Width: 11.3 mm, Rated cross-section: 4 mm<sup>2</sup>, Colour: Yellow

Article number	Article name	GTIN (EAN)	Packaging unit
<u>17211.8</u>	SQI 4/2 YE	4044211148645	50



Insulated cross-connector, No. of poles: 8, Mounting type: Plug in, Width: 47.9 mm, Rated cross-section: 4 mm<sup>2</sup>, Colour: Yellow

Article number	Article name	GTIN (EAN)	Packaging unit
<u>17217.8</u>	SQI 4/8 YE	4044211148706	10

## 17578.2 SRKD 4/LED5(RD)/24V AC BG

## Insulated cross-connector



Insulated cross-connector, No. of poles: 9, Mounting type: Plug in, Width: 54 mm, Rated cross-section: 4 mm<sup>2</sup>, Colour: Yellow

Article number	Article name	GTIN (EAN)	Packaging unit
<u>17218.8</u>	SQI 4/9 YE	4044211148713	10



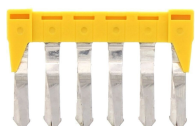
Insulated cross-connector, No. of poles: 10, Mounting type: Plug in, Width: 60.1 mm, Rated cross-section: 4 mm<sup>2</sup>, Colour: Yellow

Article number	Article name	GTIN (EAN)	Packaging unit
<u>17219.8</u>	SQI 4/10 YE	4044211148720	10



Insulated cross-connector, No. of poles: 5, Mounting type: Plug in, Width: 29.6 mm, Rated cross-section: 4 mm<sup>2</sup>, Colour: Yellow

Article number	Article name	GTIN (EAN)	Packaging unit
<u>17214.8</u>	SQI 4/5 YE	4044211148676	20



Insulated cross-connector, No. of poles: 6, Mounting type: Plug in, Width: 35.7 mm, Rated cross-section: 4 mm<sup>2</sup>, Colour: Yellow

Article number	Article name	GTIN (EAN)	Packaging unit
<u>17215.8</u>	SQI 4/6 YE	4044211148683	20



Insulated cross-connector, No. of poles: 4, Mounting type: Plug in, Width: 23.5 mm, Rated cross-section: 4 mm<sup>2</sup>, Colour: Yellow

Article number	Article name	GTIN (EAN)	Packaging unit
<u>17213.8</u>	SQI 4/4 YE	4044211148669	20



Insulated cross-connector, No. of poles: 30, Mounting type: Plug in, Width: 181.1 mm, Rated cross-section: 4 mm<sup>2</sup>, Colour: Yellow

Article number	Article name	GTIN (EAN)	Packaging unit
<u>17220.8</u>	SQI 4/30 YE	4044211148737	5

# Data sheet

## 17578.2 SRKD 4/LED5(RD)/24V AC BG

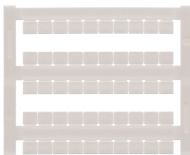
### Insulated cross-connector



Insulated cross-connector, No. of poles: 7, Mounting type: Plug in, Width: 41.8 mm, Rated cross-section: 4 mm², Colour: Yellow

Article number	Article name	GTIN (EAN)	Packaging unit
<u>17216.8</u>	SQI 4/7 YE	4044211148690	20

### Quick marking



Terminal marker / Pocket Maxicard, Length: 5 mm, Width: 6 mm, Colour: White

Article number	Article name	GTIN (EAN)	Packaging unit
<u>4702.7</u>	PMC SB 6/50 WH	4044211089986	500 ST