



Thermal transfer printer TTP eco, including power cord, USB cable, CONTA-Sign software in 9 languages (German, English, French, Spanish, Hungarian, Italian, Dutch, Russian, Turkish), for Windows versions 7, 8, 10. (Available for download at the website)

### Business data

---

|  |   |
|--|---|
| Article number                             | <u>17740.0</u>                          |
| Article name                               | TTPeco-Print. inkl. Netz-,USB-Kb., Trb. |
| GTIN (EAN)                                 | 4044211151317                           |
| Packaging unit                             | 1                                       |
| Quantity unit                              | PC                                      |
| Included in delivery                       | Printer, power cable, USB cable         |
| Weight per piece (not including packaging) | 3000 g                                  |
| Weight per piece (including packaging)     | 3200 g                                  |
| Unit of weight                             | G                                       |
| Customs number                             | 84433900                                |
| Country of origin                          | TW                                      |
| Product description                        | Thermal transfer printer                |

### Technical data

#### Dimensions

|                             |                     |
|-----------------------------|---------------------|
| Length                      | 285 mm              |
| Width                       | 226 mm              |
| Height                      | 171 mm              |
| Max. roll diameter          | 127 mm              |
| Diameter of label role core | 25,4 / 38,1 76,2 mm |

#### Further technical data

|                                    |  |
|------------------------------------|--|
| Power consumption                  | 70 W   |
| Working temperature, min.          | 5 °C   |
| Working temperature, max.          | 35 °C  |
| Relative humidity, max.            | 80 %   |
| Relative humidity in bearing, max. | 90 %   |
| Supply voltage                     | 110 - 240 V AC / 50 Hz (optional 115 V AC / 60 Hz) |
| Interface ports                    | RS232 C / USB 1.1 / Parallel Centronics (SPP)      |
| CPU                                | 32 Bit RISC-Prozessor                              |
| RAM                                | 2 MB   |

#### Application

|                     |   |
|---------------------|---|
| Intended use        | Printing labels (roll)                      |
| Print width         | 104 mm                                      |
| Print height, max.  | 850 mm                                      |
| Max. printing speed | 100 mm/Sek.                                 |
| Label width, min.   | 25 mm                                       |
| Label width, max.   | 118 mm                                      |
| Label height, max.  | 12 mm                                       |
| Resolution (dpi)    | 300   |
| Print head          | Flat Type                                   |
| Label sensor        | Transmitted light and reflection from below |

#### Environmental Product Compliance

|                                |            |
|--------------------------------|------------|
| REACH Conform                  | yes        |
| REACH Reference date           | 2024-01-23 |
| REACH Candidate Substance Note | No         |
| RoHS Conform                   | yes        |

### Media

---

### Accessories

#### Transfer ribbons



Thermal transfer film, Colour: Black, Length 300 m

| Article number | Article name  | GTIN (EAN)    | Packaging unit |
|----------------|---------------|---------------|----------------|
| <u>1641.0</u>  | TTP- Folie BK | 4044211085520 | 1 ROL          |

#### Printing system accessories



Thermal transfer printer accessories

| Article number | Article name                    | GTIN (EAN)    | Packaging unit |
|----------------|---------------------------------|---------------|----------------|
| <u>17743.0</u> | TTPeco externer Rollenabwickler | 4044211151331 | 1 ST           |

Printer cleaning set

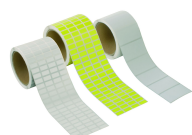
| Article number | Article name      | GTIN (EAN)    | Packaging unit |
|----------------|-------------------|---------------|----------------|
| <u>1639.0</u>  | TTP-Reinigungsset | 4044211124236 | 1 ST           |



Thermal transfer printer accessories

| Article number | Article name                          | GTIN (EAN)    | Packaging unit |
|----------------|---------------------------------------|---------------|----------------|
| <u>17742.0</u> | TTPeco optionale Abschneidvorrichtung | 4044211151324 | 1 ST           |

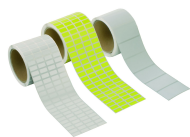
#### ##INVERSE##CONTA-LABEL



Adhesive device label, Length: 20 mm, Width: 8 mm, Colour: White

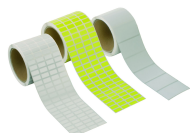
| Article number | Article name | GTIN (EAN)    | Packaging unit |
|----------------|--------------|---------------|----------------|
| <u>3903.7</u>  | GKE 20/8 WH  | 4044211079024 | 1              |

### ##INVERSE##CONTA-LABEL



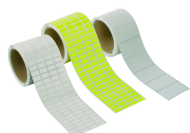
Adhesive device label, Length: 65 mm, Width: 35 mm, Colour: White

| Article number | Article name | GTIN (EAN)    | Packaging unit |
|----------------|--------------|---------------|----------------|
| <u>3911.7</u>  | GKE 65/35 WH | 4044211079246 | 1              |



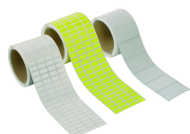
Adhesive device label, Length: 30 mm, Width: 6 mm, Colour: White

| Article number | Article name | GTIN (EAN)    | Packaging unit |
|----------------|--------------|---------------|----------------|
| <u>3917.7</u>  | GKE 30/6 WH  | 4044211103149 | 1 ST           |



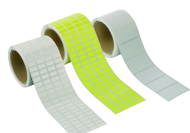
Adhesive device label, Length: 26.5 mm, Width: 17.5 mm, Colour: White

| Article number | Article name     | GTIN (EAN)    | Packaging unit |
|----------------|------------------|---------------|----------------|
| <u>3906.7</u>  | GKE 26,5/17,5 WH | 4044211204211 | 1              |



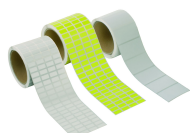
Adhesive device label, Length: 30 mm, Width: 20 mm, Colour: White

| Article number | Article name | GTIN (EAN)    | Packaging unit |
|----------------|--------------|---------------|----------------|
| <u>3907.7</u>  | GKE 30/20 WH | 4044211079123 | 1              |



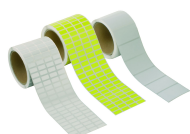
Adhesive device label, Length: 101 mm, Width: 48 mm, Colour: Silver

| Article number | Article name  | GTIN (EAN)    | Packaging unit |
|----------------|---------------|---------------|----------------|
| <u>3912.0</u>  | GKE 101/48 SI | 4044211079253 | 1 ST           |



Adhesive device label, Length: 101 mm, Width: 74 mm, Colour: Silver

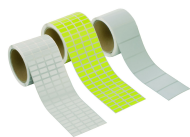
| Article number | Article name  | GTIN (EAN)    | Packaging unit |
|----------------|---------------|---------------|----------------|
| <u>3913.0</u>  | GKE 101/74 SI | 4044211079260 | 1 ST           |



Adhesive device label, Length: 10 mm, Width: 70 mm, Colour: Yellow

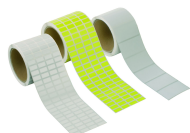
| Article number | Article name | GTIN (EAN)    | Packaging unit |
|----------------|--------------|---------------|----------------|
| <u>3914.8</u>  | GKE 10/7 YE  | 4044211079277 | 1 ST           |

### ##INVERSE##CONTA-LABEL



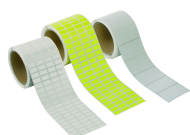
Adhesive device label, Length: 26 mm, Width: 10 mm, Colour: White

| Article number | Article name | GTIN (EAN)    | Packaging unit |
|----------------|--------------|---------------|----------------|
| <u>3905.7</u>  | GKE 26/10 WH | 4044211079086 | 1              |



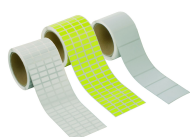
Adhesive device label, Length: 32 mm, Width: 9 mm, Colour: White

| Article number | Article name | GTIN (EAN)    | Packaging unit |
|----------------|--------------|---------------|----------------|
| <u>3908.7</u>  | GKE 32/9 WH  | 4044211079154 | 1              |



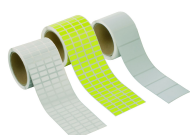
Adhesive device label, Length: 39 mm, Width: 19 mm, Colour: White

| Article number | Article name | GTIN (EAN)    | Packaging unit |
|----------------|--------------|---------------|----------------|
| <u>3909.7</u>  | GKE 38/19 WH | 4044211079185 | 1              |



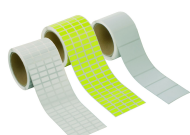
Adhesive device label, Length: 45 mm, Width: 23 mm, Colour: White

| Article number | Article name | GTIN (EAN)    | Packaging unit |
|----------------|--------------|---------------|----------------|
| <u>3910.7</u>  | GKE 45/23 WH | 4044211079215 | 1              |



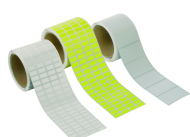
Adhesive device label, Length: 21.5 mm, Width: 21.5 mm, Colour: Silver

| Article number | Article name     | GTIN (EAN)    | Packaging unit |
|----------------|------------------|---------------|----------------|
| <u>3915.0</u>  | GKE 21,5/21,5 SI | 4044211079284 | 1 ST           |



Adhesive device label, Length: 15 mm, Width: 6 mm, Colour: White

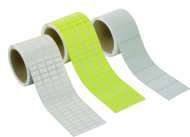
| Article number | Article name | GTIN (EAN)    | Packaging unit |
|----------------|--------------|---------------|----------------|
| <u>3900.7</u>  | GKE 15/6 WH  | 4044211078935 | 1              |



Adhesive device label, Length: 18 mm, Width: 6 mm, Colour: White

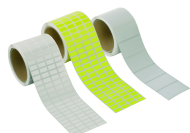
| Article number | Article name | GTIN (EAN)    | Packaging unit |
|----------------|--------------|---------------|----------------|
| <u>3901.7</u>  | GKE 18/6 WH  | 4044211078966 | 1              |

### ##INVERSE##CONTA-LABEL



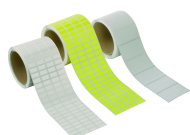
Adhesive device label, Length: 18 mm, Width: 9 mm, Colour: White

| Article number | Article name | GTIN (EAN)    | Packaging unit |
|----------------|--------------|---------------|----------------|
| <u>3902.7</u>  | GKE 18/9 WH  | 4044211078997 | 1              |



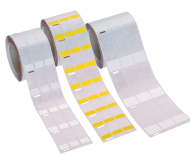
Adhesive device label, Length: 25 mm, Width: 12 mm, Colour: White

| Article number | Article name | GTIN (EAN)    | Packaging unit |
|----------------|--------------|---------------|----------------|
| <u>3904.7</u>  | GKE 25/12 WH | 4044211079055 | 1              |



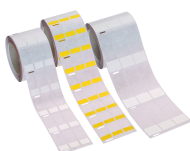
Adhesive device label, Length: 27 mm, Width: 27 mm, Colour: Silver

| Article number | Article name | GTIN (EAN)    | Packaging unit |
|----------------|--------------|---------------|----------------|
| <u>3916.0</u>  | GKE 27/27 SI | 4044211079291 | 1 ST           |



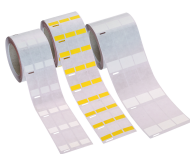
Adhesive cable label, Length: 18 mm, Width: 34 mm, Colour: White

| Article number | Article name | GTIN (EAN)    | Packaging unit |
|----------------|--------------|---------------|----------------|
| <u>3950.7</u>  | KKE 34/18 WH | 4044211085537 | 1              |



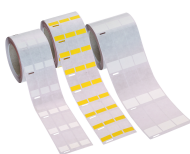
Adhesive cable label, Length: 22.8 mm, Width: 55 mm, Colour: White

| Article number | Article name | GTIN (EAN)    | Packaging unit |
|----------------|--------------|---------------|----------------|
| <u>3954.7</u>  | KKE 55/23 WH | 4044211088422 | 1              |



Adhesive cable label, Length: 25 mm, Width: 76 mm, Colour: White

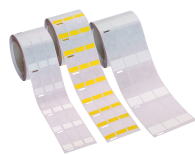
| Article number | Article name | GTIN (EAN)    | Packaging unit |
|----------------|--------------|---------------|----------------|
| <u>3951.7</u>  | KKE 76/25 WH | 4044211085551 | 1              |



Adhesive cable label, Length: 96 mm, Width: 93 mm, Colour: White

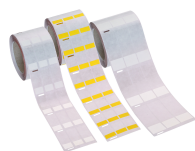
| Article number | Article name | GTIN (EAN)    | Packaging unit |
|----------------|--------------|---------------|----------------|
| <u>3952.7</u>  | KKE 93/36 WH | 4044211085575 | 1              |

### ##INVERSE##CONTA-LABEL



Adhesive cable label, Length: 25 mm, Width: 140 mm, Colour: White

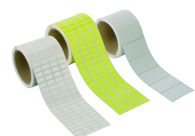
| Article number | Article name  | GTIN (EAN)    | Packaging unit |
|----------------|---------------|---------------|----------------|
| <u>3953.7</u>  | KKE 140/25 WH | 4044211085599 | 1              |



Adhesive cable label, Length: 25 mm, Width: 35 mm, Colour: White

| Article number | Article name | GTIN (EAN)    | Packaging unit |
|----------------|--------------|---------------|----------------|
| <u>3955.7</u>  | KKE 35/25 WH | 4044211088408 | 1              |

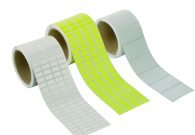
### ##INVERSE##CONTA-LABEL



Adhesive device label, Length: 26 mm, Width: 10 mm, Colour: White

| Article number | Article name | GTIN (EAN)    | Packaging unit |
|----------------|--------------|---------------|----------------|
| <u>3905.7</u>  | GKE 26/10 WH | 4044211079086 | 1              |

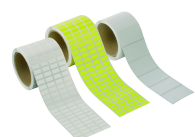
### ##INVERSE##CONTA-LABEL



Adhesive device label, Length: 65 mm, Width: 35 mm, Colour: White

| Article number | Article name | GTIN (EAN)    | Packaging unit |
|----------------|--------------|---------------|----------------|
| <u>3911.7</u>  | GKE 65/35 WH | 4044211079246 | 1              |

### ##INVERSE##CONTA-LABEL



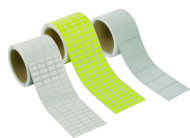
Adhesive device label, Length: 101 mm, Width: 48 mm, Colour: Silver

| Article number | Article name  | GTIN (EAN)    | Packaging unit |
|----------------|---------------|---------------|----------------|
| <u>3912.0</u>  | GKE 101/48 SI | 4044211079253 | 1 ST           |

### ##INVERSE##CONTA-LABEL



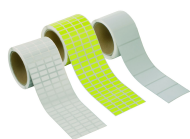
## 17740.0 TTPeco-Print. inkl. Netz-,USB-Kb., Trb.



Adhesive device label, Length: 32 mm, Width: 9 mm, Colour: White

| Article number | Article name | GTIN (EAN)    | Packaging unit |
|----------------|--------------|---------------|----------------|
| <u>3908.7</u>  | GKE 32/9 WH  | 4044211079154 | 1              |

### ##INVERSE##CONTA-LABEL



Adhesive device label, Length: 39 mm, Width: 19 mm, Colour: White

| Article number | Article name | GTIN (EAN)    | Packaging unit |
|----------------|--------------|---------------|----------------|
| <u>3909.7</u>  | GKE 38/19 WH | 4044211079185 | 1              |