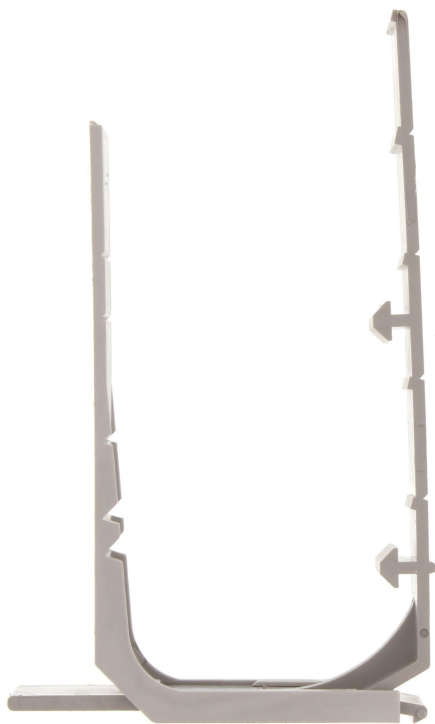


Data sheet

17892.6 VK-DTH GR



Accessories, cabling duct, Material: PS, Colour: Grey

RAL: 7032

Business data

Article number	<u>17892.6</u>
Article name	VK-DTH GR
GTIN (EAN)	4044211198770
Packaging unit	50
Quantity unit	PC
Weight per piece (not including packaging)	20 g
Weight per piece (including packaging)	20 g
Unit of weight	G
Customs number	39259020
Country of origin	QU
Product description	Accessories, cabling duct
Colour	Grey

Data sheet

17892.6 VK-DTH GR



Technical data

Dimensions

Length	25 mm
Width	115 mm
Height	104 mm

Materials

Material	Polystyrene
Working temperature, min.	-20 °C
Working temperature, max.	60 °C

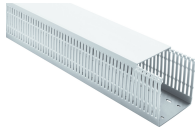
Environmental Product Compliance

REACH Conform	yes
REACH Reference date	2023-06-14
REACH Candidate Substance Note	No
RoHS Conform	yes

Media

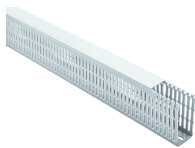
Accessories

##INVERSE##CONTA-CONNECT



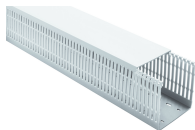
Cabling duct with cover, Mounting type: Rivets, Width: 80 mm, Height: 60 mm, Material: PC-ABS, Colour: Light grey

Article number	Article name	GTIN (EAN)	Packaging unit
<u>17847.6</u>	VK-HF 80x60 LG	4044211198534	32 M



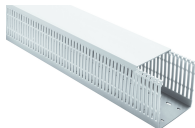
Cabling duct with cover, Mounting type: Rivets, Width: 25 mm, Height: 80 mm, Material: PC-ABS, Colour: Light grey

Article number	Article name	GTIN (EAN)	Packaging unit
<u>17850.6</u>	VK-HF 25x80 LG	4044211198541	56 M



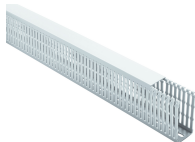
Cabling duct with cover, Mounting type: Rivets, Width: 80 mm, Height: 80 mm, Material: PC-ABS, Colour: Light grey

Article number	Article name	GTIN (EAN)	Packaging unit
<u>17853.6</u>	VK-HF 80x80 LG	4044211198572	24 M



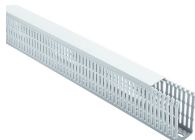
Cabling duct, Mounting type: Adhere, Width: 60 mm, Height: 40 mm, Material: PC-ABS, Colour: Light grey

Article number	Article name	GTIN (EAN)	Packaging unit
<u>17933.6</u>	VK-HF 60x40 K LG	4044211199081	40 M



Cabling duct, Mounting type: Adhere, Width: 25 mm, Height: 60 mm, Material: PC-ABS, Colour: Light grey

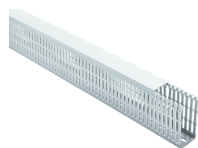
Article number	Article name	GTIN (EAN)	Packaging unit
<u>17934.6</u>	VK-HF 25x60 K LG	4044211199098	60 M



Cabling duct with cover, Mounting type: Rivets, Width: 25 mm, Height: 40 mm, Material: PC-ABS, Colour: Light grey

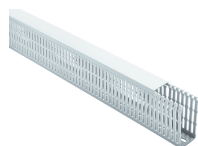
Article number	Article name	GTIN (EAN)	Packaging unit
<u>17841.6</u>	VK-HF 25x40 LG	4044211198480	68 M

##INVERSE##CONTA-CONNECT



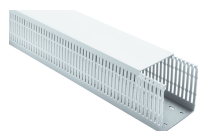
Cabling duct with cover, Mounting type: Rivets, Width: 25 mm, Height: 60 mm, Material: PC-ABS, Colour: Light grey

Article number	Article name	GTIN (EAN)	Packaging unit
<u>17844.6</u>	VK-HF 25x60 LG	4044211198503	60 M



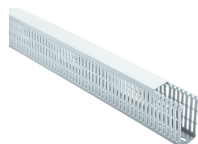
Cabling duct with cover, Mounting type: Rivets, Width: 40 mm, Height: 80 mm, Material: PC-ABS, Colour: Light grey

Article number	Article name	GTIN (EAN)	Packaging unit
<u>17851.6</u>	VK-HF 40x80 LG	4044211198558	40 M



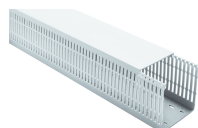
Cabling duct with cover, Mounting type: Rivets, Width: 100 mm, Height: 100 mm, Material: PC-ABS, Colour: Light grey

Article number	Article name	GTIN (EAN)	Packaging unit
<u>17860.6</u>	VK-HF 100x100 LG	4044211198619	16 M



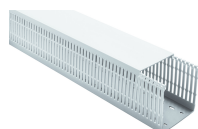
Cabling duct, Mounting type: Adhere, Width: 30 mm, Height: 30 mm, Material: PC-ABS, Colour: Light grey

Article number	Article name	GTIN (EAN)	Packaging unit
<u>17930.6</u>	VK-HF 30x30 K LG	4044211199067	64 M



Cabling duct with cover, Mounting type: Rivets, Width: 60 mm, Height: 40 mm, Material: PC-ABS, Colour: Light grey

Article number	Article name	GTIN (EAN)	Packaging unit
<u>17843.6</u>	VK-HF 60x40 LG	4044211198497	40 M



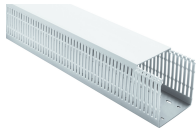
Cabling duct with cover, Mounting type: Rivets, Width: 60 mm, Height: 60 mm, Material: PC-ABS, Colour: Light grey

Article number	Article name	GTIN (EAN)	Packaging unit
<u>17846.6</u>	VK-HF 60x60 LG	4044211198527	36 M

Data sheet

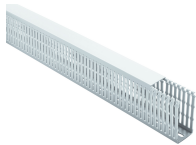
17892.6 VK-DTH GR

##INVERSE##CONTA-CONNECT



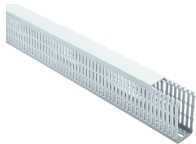
Cabling duct with cover, Mounting type: Rivets, Width: 60 mm, Height: 80 mm, Material: PC-ABS, Colour: Light grey

Article number	Article name	GTIN (EAN)	Packaging unit
<u>17852.6</u>	VK-HF 60x80 LG	4044211198565	36 M



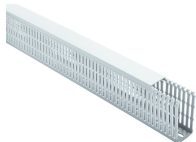
Cabling duct, Mounting type: Adhere, Width: 25 mm, Height: 40 mm, Material: PC-ABS, Colour: Light grey

Article number	Article name	GTIN (EAN)	Packaging unit
<u>17931.6</u>	VK-HF 25x40 K LG	4044211199074	68 M



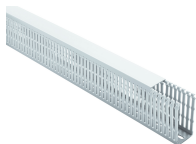
Cabling duct, Mounting type: Adhere, Width: 40 mm, Height: 60 mm, Material: PC-ABS, Colour: Light grey

Article number	Article name	GTIN (EAN)	Packaging unit
<u>17935.6</u>	VK-HF 40x60 K LG	4044211199104	48 M



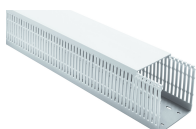
Cabling duct, Mounting type: Adhere, Width: 40 mm, Height: 80 mm, Material: PC-ABS, Colour: Light grey

Article number	Article name	GTIN (EAN)	Packaging unit
<u>17941.6</u>	VK-HF 40x80 K LG	4044211199142	40 M



Cabling duct, Mounting type: Adhere, Width: 40 mm, Height: 100 mm, Material: PC-ABS, Colour: Light grey

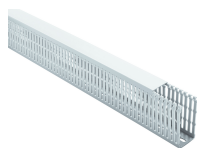
Article number	Article name	GTIN (EAN)	Packaging unit
<u>17947.6</u>	VK-HF 40x100 K LG	4044211199180	24 M



Cabling duct, Mounting type: Adhere, Width: 60 mm, Height: 100 mm, Material: PC-ABS, Colour: Light grey

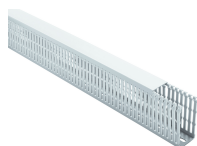
Article number	Article name	GTIN (EAN)	Packaging unit
<u>17948.6</u>	VK-HF 60x100 K LG	4044211199197	32 M

##INVERSE##CONTA-CONNECT



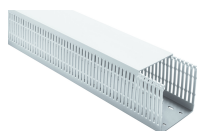
Cabling duct with cover, Mounting type: Rivets, Width: 40 mm, Height: 60 mm, Material: PC-ABS, Colour: Light grey

Article number	Article name	GTIN (EAN)	Packaging unit
<u>17845.6</u>	VK-HF 40x60 LG	4044211198510	48 M



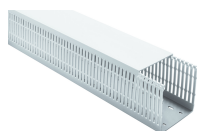
Cabling duct with cover, Mounting type: Rivets, Width: 40 mm, Height: 100 mm, Material: PC-ABS, Colour: Light grey

Article number	Article name	GTIN (EAN)	Packaging unit
<u>17857.6</u>	VK-HF 40x100 LG	4044211198596	24 M



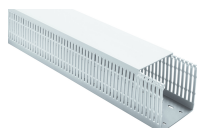
Cabling duct with cover, Mounting type: Rivets, Width: 60 mm, Height: 100 mm, Material: PC-ABS, Colour: Light grey

Article number	Article name	GTIN (EAN)	Packaging unit
<u>17858.6</u>	VK-HF 60x100 LG	4044211198602	32 M



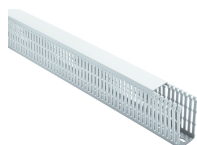
Cabling duct, Mounting type: Adhere, Width: 60 mm, Height: 60 mm, Material: PC-ABS, Colour: Light grey

Article number	Article name	GTIN (EAN)	Packaging unit
<u>17936.6</u>	VK-HF 60x60 K LG	4044211199111	36 M



Cabling duct, Mounting type: Adhere, Width: 80 mm, Height: 60 mm, Material: PC-ABS, Colour: Light grey

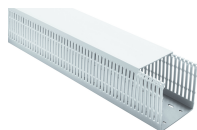
Article number	Article name	GTIN (EAN)	Packaging unit
<u>17937.6</u>	VK-HF 80x60 K LG	4044211199128	32 M



Cabling duct, Mounting type: Adhere, Width: 25 mm, Height: 80 mm, Material: PC-ABS, Colour: Light grey

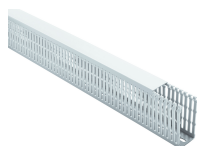
Article number	Article name	GTIN (EAN)	Packaging unit
<u>17940.6</u>	VK-HF 25x80 K LG	4044211199135	56 M

##INVERSE##CONTA-CONNECT



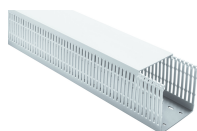
Cabling duct, Mounting type: Adhere, Width: 100 mm, Height: 100 mm, Material: PC-ABS, Colour: Light grey

Article number	Article name	GTIN (EAN)	Packaging unit
<u>17950.6</u>	VK-HF 100x100 K LG	4044211199203	16 M



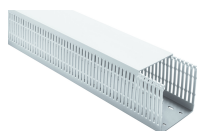
Cabling duct with cover, Mounting type: Rivets, Width: 30 mm, Height: 30 mm, Material: PC-ABS, Colour: Light grey

Article number	Article name	GTIN (EAN)	Packaging unit
<u>17840.6</u>	VK-HF 30x30 LG	4044211198473	64 M



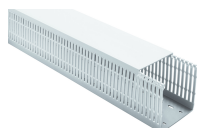
Cabling duct with cover, Mounting type: Rivets, Width: 100 mm, Height: 80 mm, Material: PC-ABS, Colour: Light grey

Article number	Article name	GTIN (EAN)	Packaging unit
<u>17854.6</u>	VK-HF 100x80 LG	4044211198589	24 M



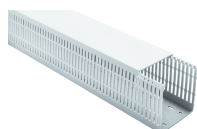
Cabling duct, Mounting type: Adhere, Width: 60 mm, Height: 80 mm, Material: PC-ABS, Colour: Light grey

Article number	Article name	GTIN (EAN)	Packaging unit
<u>17942.6</u>	VK-HF 60x80 K LG	4044211199159	36 M



Cabling duct, Mounting type: Adhere, Width: 80 mm, Height: 80 mm, Material: PC-ABS, Colour: Light grey

Article number	Article name	GTIN (EAN)	Packaging unit
<u>17943.6</u>	VK-HF 80x80 K LG	4044211199166	24 M



Cabling duct, Mounting type: Adhere, Width: 100 mm, Height: 80 mm, Material: PC-ABS, Colour: Light grey

Article number	Article name	GTIN (EAN)	Packaging unit
<u>17944.6</u>	VK-HF 100x80 K LG	4044211199173	24 M