



Expanding rivets, Material: PA, Colour: Black

RAL: 9005

Business data

Article number	<u>17896.4</u>
Article name	SN-PA 3,5 BK
GTIN (EAN)	4044211198800
Packaging unit	4000
Quantity unit	PC
Weight per piece (not including packaging)	0.2 g
Weight per piece (including packaging)	0.2 g
Unit of weight	G
Customs number	39269097
Country of origin	JP
Product description	Rivets
Colour	Black

Technical data

Dimensions

Width	7.6 mm
Height	7.6 mm
Drill hole diameter	3.7 mm
Diameter rivet	3.5 mm
Shank length	6 mm
Diameter head	7.6 mm

Materials

Material	Polyamide
Flammability class UL 94	V-2
Working temperature, min.	-40 °C
Working temperature, max.	90 °C

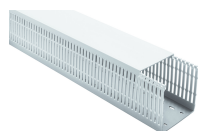
Environmental Product Compliance

REACH Conform	yes
REACH Reference date	2024-01-23
REACH Candidate Substance Note	No
RoHS Conform	yes

Media

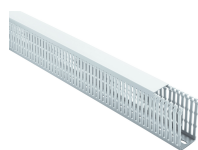
Accessories

##INVERSE##CONTA-CONNECT



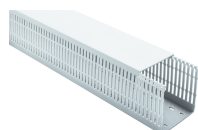
Cabling duct with cover, Mounting type: Rivets, Width: 80 mm, Height: 60 mm, Material: PC-ABS, Colour: Light grey

Article number	Article name	GTIN (EAN)	Packaging unit
<u>17847.6</u>	VK-HF 80x60 LG	4044211198534	32 M



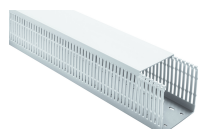
Cabling duct with cover, Mounting type: Rivets, Width: 25 mm, Height: 80 mm, Material: PC-ABS, Colour: Light grey

Article number	Article name	GTIN (EAN)	Packaging unit
<u>17850.6</u>	VK-HF 25x80 LG	4044211198541	56 M



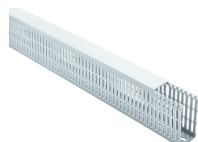
Cabling duct with cover, Mounting type: Rivets, Width: 80 mm, Height: 80 mm, Material: PC-ABS, Colour: Light grey

Article number	Article name	GTIN (EAN)	Packaging unit
<u>17853.6</u>	VK-HF 80x80 LG	4044211198572	24 M



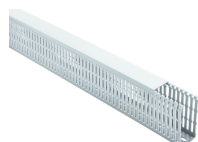
Cabling duct, Mounting type: Adhere, Width: 60 mm, Height: 40 mm, Material: PC-ABS, Colour: Light grey

Article number	Article name	GTIN (EAN)	Packaging unit
<u>17933.6</u>	VK-HF 60x40 K LG	4044211199081	40 M



Cabling duct, Mounting type: Adhere, Width: 25 mm, Height: 60 mm, Material: PC-ABS, Colour: Light grey

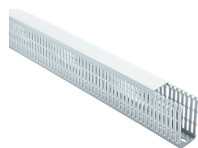
Article number	Article name	GTIN (EAN)	Packaging unit
<u>17934.6</u>	VK-HF 25x60 K LG	4044211199098	60 M



Cabling duct with cover, Mounting type: Rivets, Width: 25 mm, Height: 40 mm, Material: PC-ABS, Colour: Light grey

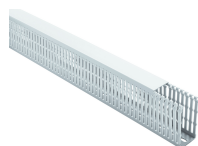
Article number	Article name	GTIN (EAN)	Packaging unit
<u>17841.6</u>	VK-HF 25x40 LG	4044211198480	68 M

##INVERSE##CONTA-CONNECT



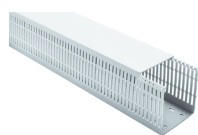
Cabling duct with cover, Mounting type: Rivets, Width: 25 mm, Height: 60 mm, Material: PC-ABS, Colour: Light grey

Article number	Article name	GTIN (EAN)	Packaging unit
<u>17844.6</u>	VK-HF 25x60 LG	4044211198503	60 M



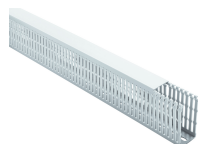
Cabling duct with cover, Mounting type: Rivets, Width: 40 mm, Height: 80 mm, Material: PC-ABS, Colour: Light grey

Article number	Article name	GTIN (EAN)	Packaging unit
<u>17851.6</u>	VK-HF 40x80 LG	4044211198558	40 M



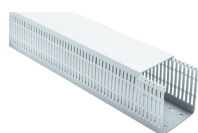
Cabling duct with cover, Mounting type: Rivets, Width: 100 mm, Height: 100 mm, Material: PC-ABS, Colour: Light grey

Article number	Article name	GTIN (EAN)	Packaging unit
<u>17860.6</u>	VK-HF 100x100 LG	4044211198619	16 M



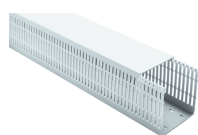
Cabling duct, Mounting type: Adhere, Width: 30 mm, Height: 30 mm, Material: PC-ABS, Colour: Light grey

Article number	Article name	GTIN (EAN)	Packaging unit
<u>17930.6</u>	VK-HF 30x30 K LG	4044211199067	64 M



Cabling duct with cover, Mounting type: Rivets, Width: 60 mm, Height: 40 mm, Material: PC-ABS, Colour: Light grey

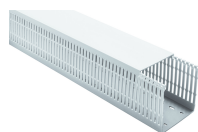
Article number	Article name	GTIN (EAN)	Packaging unit
<u>17843.6</u>	VK-HF 60x40 LG	4044211198497	40 M



Cabling duct with cover, Mounting type: Rivets, Width: 60 mm, Height: 60 mm, Material: PC-ABS, Colour: Light grey

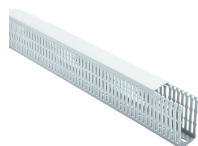
Article number	Article name	GTIN (EAN)	Packaging unit
<u>17846.6</u>	VK-HF 60x60 LG	4044211198527	36 M

##INVERSE##CONTA-CONNECT



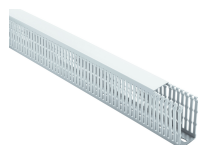
Cabling duct with cover, Mounting type: Rivets, Width: 60 mm, Height: 80 mm, Material: PC-ABS, Colour: Light grey

Article number	Article name	GTIN (EAN)	Packaging unit
<u>17852.6</u>	VK-HF 60x80 LG	4044211198565	36 M



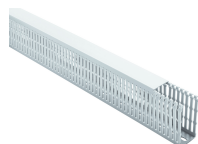
Cabling duct, Mounting type: Adhere, Width: 25 mm, Height: 40 mm, Material: PC-ABS, Colour: Light grey

Article number	Article name	GTIN (EAN)	Packaging unit
<u>17931.6</u>	VK-HF 25x40 K LG	4044211199074	68 M



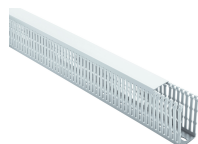
Cabling duct, Mounting type: Adhere, Width: 40 mm, Height: 60 mm, Material: PC-ABS, Colour: Light grey

Article number	Article name	GTIN (EAN)	Packaging unit
<u>17935.6</u>	VK-HF 40x60 K LG	4044211199104	48 M



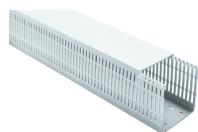
Cabling duct, Mounting type: Adhere, Width: 40 mm, Height: 80 mm, Material: PC-ABS, Colour: Light grey

Article number	Article name	GTIN (EAN)	Packaging unit
<u>17941.6</u>	VK-HF 40x80 K LG	4044211199142	40 M



Cabling duct, Mounting type: Adhere, Width: 40 mm, Height: 100 mm, Material: PC-ABS, Colour: Light grey

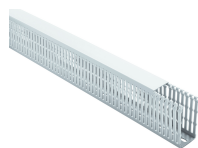
Article number	Article name	GTIN (EAN)	Packaging unit
<u>17947.6</u>	VK-HF 40x100 K LG	4044211199180	24 M



Cabling duct, Mounting type: Adhere, Width: 60 mm, Height: 100 mm, Material: PC-ABS, Colour: Light grey

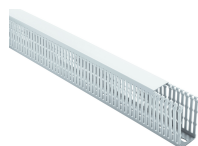
Article number	Article name	GTIN (EAN)	Packaging unit
<u>17948.6</u>	VK-HF 60x100 K LG	4044211199197	32 M

##INVERSE##CONTA-CONNECT



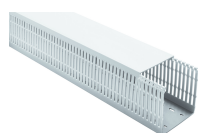
Cabling duct with cover, Mounting type: Rivets, Width: 40 mm, Height: 60 mm, Material: PC-ABS, Colour: Light grey

Article number	Article name	GTIN (EAN)	Packaging unit
<u>17845.6</u>	VK-HF 40x60 LG	4044211198510	48 M



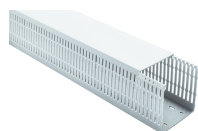
Cabling duct with cover, Mounting type: Rivets, Width: 40 mm, Height: 100 mm, Material: PC-ABS, Colour: Light grey

Article number	Article name	GTIN (EAN)	Packaging unit
<u>17857.6</u>	VK-HF 40x100 LG	4044211198596	24 M



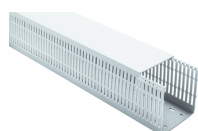
Cabling duct with cover, Mounting type: Rivets, Width: 60 mm, Height: 100 mm, Material: PC-ABS, Colour: Light grey

Article number	Article name	GTIN (EAN)	Packaging unit
<u>17858.6</u>	VK-HF 60x100 LG	4044211198602	32 M



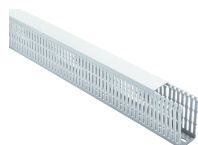
Cabling duct, Mounting type: Adhere, Width: 60 mm, Height: 60 mm, Material: PC-ABS, Colour: Light grey

Article number	Article name	GTIN (EAN)	Packaging unit
<u>17936.6</u>	VK-HF 60x60 K LG	4044211199111	36 M



Cabling duct, Mounting type: Adhere, Width: 80 mm, Height: 60 mm, Material: PC-ABS, Colour: Light grey

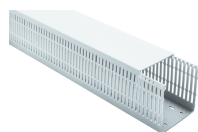
Article number	Article name	GTIN (EAN)	Packaging unit
<u>17937.6</u>	VK-HF 80x60 K LG	4044211199128	32 M



Cabling duct, Mounting type: Adhere, Width: 25 mm, Height: 80 mm, Material: PC-ABS, Colour: Light grey

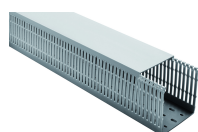
Article number	Article name	GTIN (EAN)	Packaging unit
<u>17940.6</u>	VK-HF 25x80 K LG	4044211199135	56 M

##INVERSE##CONTA-CONNECT



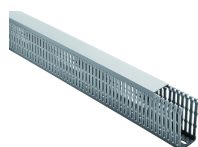
Cabling duct, Mounting type: Adhere, Width: 100 mm, Height: 100 mm, Material: PC-ABS, Colour: Light grey

Article number	Article name	GTIN (EAN)	Packaging unit
<u>17950.6</u>	VK-HF 100x100 K LG	4044211199203	16 M



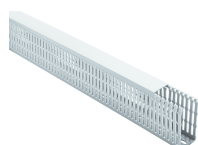
Cabling duct with cover, Mounting type: Rivets, Width: 100 mm, Height: 60 mm, Material: PVC-U, Colour: Grey

Article number	Article name	GTIN (EAN)	Packaging unit
<u>17808.6</u>	VK 100x60 GR	4044211198251	20 M



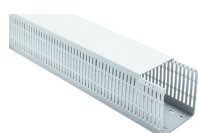
Cabling duct with cover, Mounting type: Rivets, Width: 25 mm, Height: 100 mm, Material: PVC-U, Colour: Grey

Article number	Article name	GTIN (EAN)	Packaging unit
<u>17816.6</u>	VK 25x100 GR	4044211198336	44 M



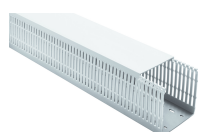
Cabling duct with cover, Mounting type: Rivets, Width: 30 mm, Height: 30 mm, Material: PC-ABS, Colour: Light grey

Article number	Article name	GTIN (EAN)	Packaging unit
<u>17840.6</u>	VK-HF 30x30 LG	4044211198473	64 M



Cabling duct with cover, Mounting type: Rivets, Width: 100 mm, Height: 80 mm, Material: PC-ABS, Colour: Light grey

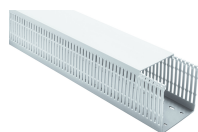
Article number	Article name	GTIN (EAN)	Packaging unit
<u>17854.6</u>	VK-HF 100x80 LG	4044211198589	24 M



Cabling duct, Mounting type: Adhere, Width: 60 mm, Height: 80 mm, Material: PC-ABS, Colour: Light grey

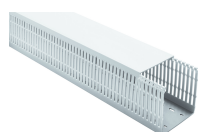
Article number	Article name	GTIN (EAN)	Packaging unit
<u>17942.6</u>	VK-HF 60x80 K LG	4044211199159	36 M

##INVERSE##CONTA-CONNECT



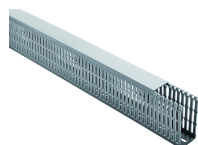
Cabling duct, Mounting type: Adhere, Width: 80 mm, Height: 80 mm, Material: PC-ABS, Colour: Light grey

Article number	Article name	GTIN (EAN)	Packaging unit
<u>17943.6</u>	VK-HF 80x80 K LG	4044211199166	24 M



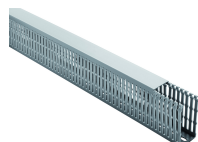
Cabling duct, Mounting type: Adhere, Width: 100 mm, Height: 80 mm, Material: PC-ABS, Colour: Light grey

Article number	Article name	GTIN (EAN)	Packaging unit
<u>17944.6</u>	VK-HF 100x80 K LG	4044211199173	24 M



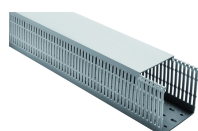
Cabling duct with cover, Mounting type: Rivets, Width: 30 mm, Height: 30 mm, Material: PVC-U, Colour: Grey

Article number	Article name	GTIN (EAN)	Packaging unit
<u>17800.6</u>	VK 25x30 GR	4044211198176	100 M



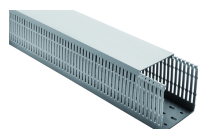
Cabling duct with cover, Mounting type: Rivets, Width: 25 mm, Height: 40 mm, Material: PVC-U, Colour: Grey

Article number	Article name	GTIN (EAN)	Packaging unit
<u>17801.6</u>	VK 25x40 GR	4044211198183	100 M



Cabling duct with cover, Mounting type: Rivets, Width: 60 mm, Height: 60 mm, Material: PVC-U, Colour: Grey

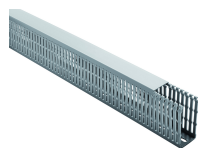
Article number	Article name	GTIN (EAN)	Packaging unit
<u>17806.6</u>	VK 60x60 GR	4044211198237	24 M



Cabling duct with cover, Mounting type: Rivets, Width: 80 mm, Height: 60 mm, Material: PVC-U, Colour: Grey

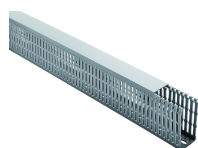
Article number	Article name	GTIN (EAN)	Packaging unit
<u>17807.6</u>	VK 80x60 GR	4044211198244	28 M

##INVERSE##CONTA-CONNECT



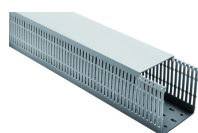
Cabling duct with cover, Mounting type: Rivets, Width: 25 mm, Height: 80 mm, Material: PVC-U, Colour: Grey

Article number	Article name	GTIN (EAN)	Packaging unit
<u>17810.6</u>	VK 25x80 GR	4044211198275	56 M



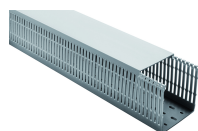
Cabling duct with cover, Mounting type: Rivets, Width: 40 mm, Height: 80 mm, Material: PVC-U, Colour: Grey

Article number	Article name	GTIN (EAN)	Packaging unit
<u>17811.6</u>	VK 40x80 GR	4044211198282	40 M



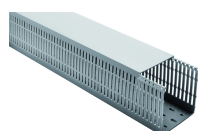
Cabling duct with cover, Mounting type: Rivets, Width: 80 mm, Height: 80 mm, Material: PVC-U, Colour: Grey

Article number	Article name	GTIN (EAN)	Packaging unit
<u>17813.6</u>	VK 80x80 GR	4044211198305	20 M



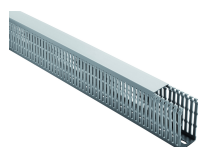
Cabling duct with cover, Mounting type: Rivets, Width: 100 mm, Height: 80 mm, Material: PVC-U, Colour: Grey

Article number	Article name	GTIN (EAN)	Packaging unit
<u>17814.6</u>	VK 100x80 GR	4044211198312	16 M



Cabling duct with cover, Mounting type: Rivets, Width: 100 mm, Height: 100 mm, Material: PVC-U, Colour: Grey

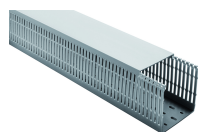
Article number	Article name	GTIN (EAN)	Packaging unit
<u>17820.6</u>	VK 100x100 GR	4044211198374	24 M



Cabling duct with cover, Mounting type: Rivets, Width: 40 mm, Height: 40 mm, Material: PVC-U, Colour: Grey

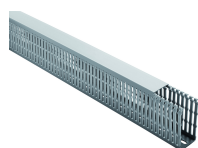
Article number	Article name	GTIN (EAN)	Packaging unit
<u>17802.6</u>	VK 40x40 GR	4044211198190	52 M

##INVERSE##CONTA-CONNECT



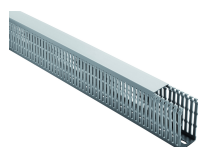
Cabling duct with cover, Mounting type: Rivets, Width: 60 mm, Height: 40 mm, Material: PVC-U, Colour: Grey

Article number	Article name	GTIN (EAN)	Packaging unit
<u>17803.6</u>	VK 60x40 GR	4044211198206	36 M



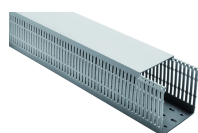
Cabling duct with cover, Mounting type: Rivets, Width: 25 mm, Height: 60 mm, Material: PVC-U, Colour: Grey

Article number	Article name	GTIN (EAN)	Packaging unit
<u>17804.6</u>	VK 25x60 GR	4044211198213	60 M



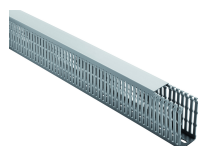
Cabling duct with cover, Mounting type: Rivets, Width: 40 mm, Height: 60 mm, Material: PVC-U, Colour: Grey

Article number	Article name	GTIN (EAN)	Packaging unit
<u>17805.6</u>	VK 40x60 GR	4044211198220	36 M



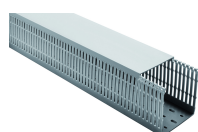
Cabling duct with cover, Mounting type: Rivets, Width: 120 mm, Height: 60 mm, Material: PVC-U, Colour: Grey

Article number	Article name	GTIN (EAN)	Packaging unit
<u>17809.6</u>	VK 120x60 GR	4044211198268	16 M



Cabling duct with cover, Mounting type: Rivets, Width: 40 mm, Height: 100 mm, Material: PVC-U, Colour: Grey

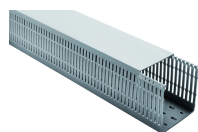
Article number	Article name	GTIN (EAN)	Packaging unit
<u>17817.6</u>	VK 40x100 GR	4044211198343	28 M



Cabling duct with cover, Mounting type: Rivets, Width: 60 mm, Height: 100 mm, Material: PVC-U, Colour: Grey

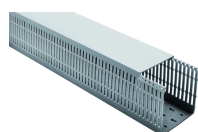
Article number	Article name	GTIN (EAN)	Packaging unit
<u>17818.6</u>	VK 60x100 GR	4044211198350	36 M

##INVERSE##CONTA-CONNECT



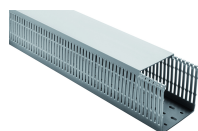
Cabling duct with cover, Mounting type: Rivets, Width: 60 mm, Height: 80 mm, Material: PVC-U, Colour: Grey

Article number	Article name	GTIN (EAN)	Packaging unit
<u>17812.6</u>	VK 60x80 GR	4044211198299	24 M



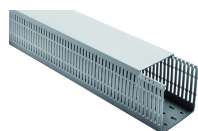
Cabling duct with cover, Mounting type: Rivets, Width: 120 mm, Height: 80 mm, Material: PVC-U, Colour: Grey

Article number	Article name	GTIN (EAN)	Packaging unit
<u>17815.6</u>	VK 120x80 GR	4044211198329	12 M



Cabling duct with cover, Mounting type: Rivets, Width: 80 mm, Height: 100 mm, Material: PVC-U, Colour: Grey

Article number	Article name	GTIN (EAN)	Packaging unit
<u>17819.6</u>	VK 80x100 GR	4044211198367	24 M



Cabling duct with cover, Mounting type: Rivets, Width: 150 mm, Height: 100 mm, Material: PVC-U, Colour: Grey

Article number	Article name	GTIN (EAN)	Packaging unit
<u>17821.6</u>	VK 150x100 GR	4044211198381	16 M