

Data sheet

17897.4 SN-PA 5 BK



Expanding rivets, Material: PA, Colour: Black

RAL: 9005

Business data

Article number	<u>17897.4</u>
Article name	SN-PA 5 BK
GTIN (EAN)	4044211198817
Packaging unit	4000
Quantity unit	PC
Weight per piece (not including packaging)	0.3 g
Weight per piece (including packaging)	0.3 g
Unit of weight	G
Customs number	39269097
Country of origin	EU
Product description	Rivets
Colour	Black

Data sheet

17897.4 SN-PA 5 BK



Technical data

Dimensions

Length	22.5 mm
Width	9.6 mm
Height	9.6 mm
Drill hole diameter	5.2 mm
Diameter rivet	5 mm
Shank length	10.3 mm
Diameter head	9.6 mm

Materials

Material	Polyamide
Flammability class UL 94	V-2
Working temperature, min.	-40 °C
Working temperature, max.	90 °C

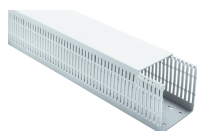
Environmental Product Compliance

REACH Conform	yes
REACH Reference date	2023-06-14
REACH Candidate Substance Note	No
RoHS Conform	yes

Media

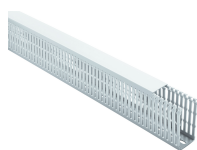
Accessories

##INVERSE##CONTA-CONNECT



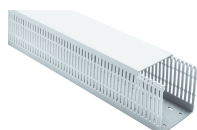
Cabling duct with cover, Mounting type: Rivets, Width: 80 mm, Height: 60 mm, Material: PC-ABS, Colour: Light grey

Article number	Article name	GTIN (EAN)	Packaging unit
<u>17847.6</u>	VK-HF 80x60 LG	4044211198534	32 M



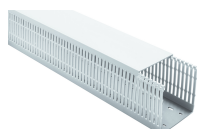
Cabling duct with cover, Mounting type: Rivets, Width: 25 mm, Height: 80 mm, Material: PC-ABS, Colour: Light grey

Article number	Article name	GTIN (EAN)	Packaging unit
<u>17850.6</u>	VK-HF 25x80 LG	4044211198541	56 M



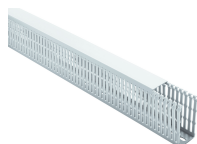
Cabling duct with cover, Mounting type: Rivets, Width: 80 mm, Height: 80 mm, Material: PC-ABS, Colour: Light grey

Article number	Article name	GTIN (EAN)	Packaging unit
<u>17853.6</u>	VK-HF 80x80 LG	4044211198572	24 M



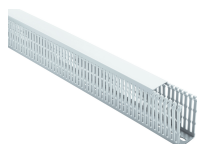
Cabling duct, Mounting type: Adhere, Width: 60 mm, Height: 40 mm, Material: PC-ABS, Colour: Light grey

Article number	Article name	GTIN (EAN)	Packaging unit
<u>17933.6</u>	VK-HF 60x40 K LG	4044211199081	40 M



Cabling duct, Mounting type: Adhere, Width: 25 mm, Height: 60 mm, Material: PC-ABS, Colour: Light grey

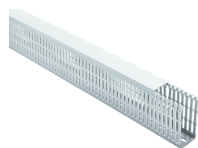
Article number	Article name	GTIN (EAN)	Packaging unit
<u>17934.6</u>	VK-HF 25x60 K LG	4044211199098	60 M



Cabling duct with cover, Mounting type: Rivets, Width: 25 mm, Height: 40 mm, Material: PC-ABS, Colour: Light grey

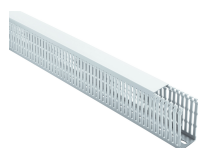
Article number	Article name	GTIN (EAN)	Packaging unit
<u>17841.6</u>	VK-HF 25x40 LG	4044211198480	68 M

##INVERSE##CONTA-CONNECT



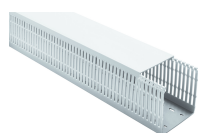
Cabling duct with cover, Mounting type: Rivets, Width: 25 mm, Height: 60 mm, Material: PC-ABS, Colour: Light grey

Article number	Article name	GTIN (EAN)	Packaging unit
<u>17844.6</u>	VK-HF 25x60 LG	4044211198503	60 M



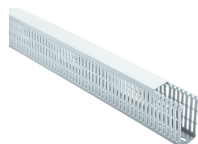
Cabling duct with cover, Mounting type: Rivets, Width: 40 mm, Height: 80 mm, Material: PC-ABS, Colour: Light grey

Article number	Article name	GTIN (EAN)	Packaging unit
<u>17851.6</u>	VK-HF 40x80 LG	4044211198558	40 M



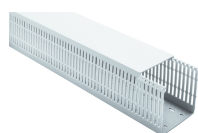
Cabling duct with cover, Mounting type: Rivets, Width: 100 mm, Height: 100 mm, Material: PC-ABS, Colour: Light grey

Article number	Article name	GTIN (EAN)	Packaging unit
<u>17860.6</u>	VK-HF 100x100 LG	4044211198619	16 M



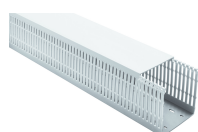
Cabling duct, Mounting type: Adhere, Width: 30 mm, Height: 30 mm, Material: PC-ABS, Colour: Light grey

Article number	Article name	GTIN (EAN)	Packaging unit
<u>17930.6</u>	VK-HF 30x30 K LG	4044211199067	64 M



Cabling duct with cover, Mounting type: Rivets, Width: 60 mm, Height: 40 mm, Material: PC-ABS, Colour: Light grey

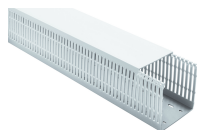
Article number	Article name	GTIN (EAN)	Packaging unit
<u>17843.6</u>	VK-HF 60x40 LG	4044211198497	40 M



Cabling duct with cover, Mounting type: Rivets, Width: 60 mm, Height: 60 mm, Material: PC-ABS, Colour: Light grey

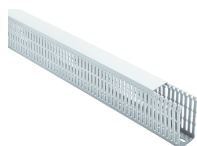
Article number	Article name	GTIN (EAN)	Packaging unit
<u>17846.6</u>	VK-HF 60x60 LG	4044211198527	36 M

##INVERSE##CONTA-CONNECT



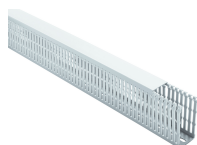
Cabling duct with cover, Mounting type: Rivets, Width: 60 mm, Height: 80 mm, Material: PC-ABS, Colour: Light grey

Article number	Article name	GTIN (EAN)	Packaging unit
<u>17852.6</u>	VK-HF 60x80 LG	4044211198565	36 M



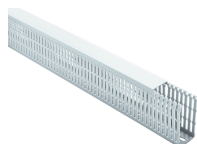
Cabling duct, Mounting type: Adhere, Width: 25 mm, Height: 40 mm, Material: PC-ABS, Colour: Light grey

Article number	Article name	GTIN (EAN)	Packaging unit
<u>17931.6</u>	VK-HF 25x40 K LG	4044211199074	68 M



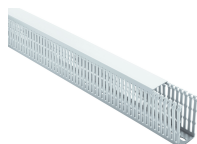
Cabling duct, Mounting type: Adhere, Width: 40 mm, Height: 60 mm, Material: PC-ABS, Colour: Light grey

Article number	Article name	GTIN (EAN)	Packaging unit
<u>17935.6</u>	VK-HF 40x60 K LG	4044211199104	48 M



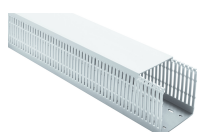
Cabling duct, Mounting type: Adhere, Width: 40 mm, Height: 80 mm, Material: PC-ABS, Colour: Light grey

Article number	Article name	GTIN (EAN)	Packaging unit
<u>17941.6</u>	VK-HF 40x80 K LG	4044211199142	40 M



Cabling duct, Mounting type: Adhere, Width: 40 mm, Height: 100 mm, Material: PC-ABS, Colour: Light grey

Article number	Article name	GTIN (EAN)	Packaging unit
<u>17947.6</u>	VK-HF 40x100 K LG	4044211199180	24 M



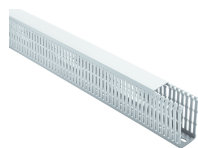
Cabling duct, Mounting type: Adhere, Width: 60 mm, Height: 100 mm, Material: PC-ABS, Colour: Light grey

Article number	Article name	GTIN (EAN)	Packaging unit
<u>17948.6</u>	VK-HF 60x100 K LG	4044211199197	32 M

Data sheet

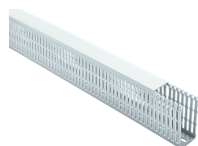
17897.4 SN-PA 5 BK

##INVERSE##CONTA-CONNECT



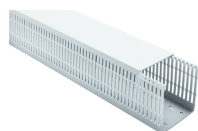
Cabling duct with cover, Mounting type: Rivets, Width: 40 mm, Height: 60 mm, Material: PC-ABS, Colour: Light grey

Article number	Article name	GTIN (EAN)	Packaging unit
<u>17845.6</u>	VK-HF 40x60 LG	4044211198510	48 M



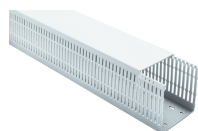
Cabling duct with cover, Mounting type: Rivets, Width: 40 mm, Height: 100 mm, Material: PC-ABS, Colour: Light grey

Article number	Article name	GTIN (EAN)	Packaging unit
<u>17857.6</u>	VK-HF 40x100 LG	4044211198596	24 M



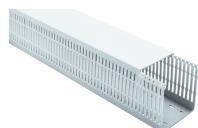
Cabling duct with cover, Mounting type: Rivets, Width: 60 mm, Height: 100 mm, Material: PC-ABS, Colour: Light grey

Article number	Article name	GTIN (EAN)	Packaging unit
<u>17858.6</u>	VK-HF 60x100 LG	4044211198602	32 M



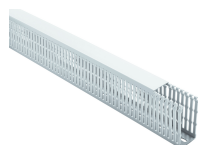
Cabling duct, Mounting type: Adhere, Width: 60 mm, Height: 60 mm, Material: PC-ABS, Colour: Light grey

Article number	Article name	GTIN (EAN)	Packaging unit
<u>17936.6</u>	VK-HF 60x60 K LG	4044211199111	36 M



Cabling duct, Mounting type: Adhere, Width: 80 mm, Height: 60 mm, Material: PC-ABS, Colour: Light grey

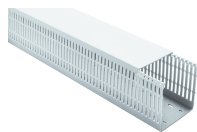
Article number	Article name	GTIN (EAN)	Packaging unit
<u>17937.6</u>	VK-HF 80x60 K LG	4044211199128	32 M



Cabling duct, Mounting type: Adhere, Width: 25 mm, Height: 80 mm, Material: PC-ABS, Colour: Light grey

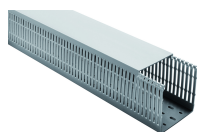
Article number	Article name	GTIN (EAN)	Packaging unit
<u>17940.6</u>	VK-HF 25x80 K LG	4044211199135	56 M

##INVERSE##CONTA-CONNECT



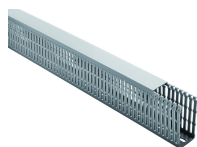
Cabling duct, Mounting type: Adhere, Width: 100 mm, Height: 100 mm, Material: PC-ABS, Colour: Light grey

Article number	Article name	GTIN (EAN)	Packaging unit
<u>17950.6</u>	VK-HF 100x100 K LG	4044211199203	16 M



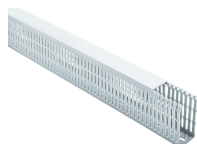
Cabling duct with cover, Mounting type: Rivets, Width: 100 mm, Height: 60 mm, Material: PVC-U, Colour: Grey

Article number	Article name	GTIN (EAN)	Packaging unit
<u>17808.6</u>	VK 100x60 GR	4044211198251	20 M



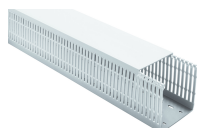
Cabling duct with cover, Mounting type: Rivets, Width: 25 mm, Height: 100 mm, Material: PVC-U, Colour: Grey

Article number	Article name	GTIN (EAN)	Packaging unit
<u>17816.6</u>	VK 25x100 GR	4044211198336	44 M



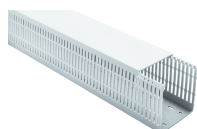
Cabling duct with cover, Mounting type: Rivets, Width: 30 mm, Height: 30 mm, Material: PC-ABS, Colour: Light grey

Article number	Article name	GTIN (EAN)	Packaging unit
<u>17840.6</u>	VK-HF 30x30 LG	4044211198473	64 M



Cabling duct with cover, Mounting type: Rivets, Width: 100 mm, Height: 80 mm, Material: PC-ABS, Colour: Light grey

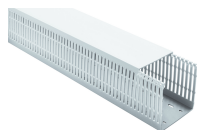
Article number	Article name	GTIN (EAN)	Packaging unit
<u>17854.6</u>	VK-HF 100x80 LG	4044211198589	24 M



Cabling duct, Mounting type: Adhere, Width: 60 mm, Height: 80 mm, Material: PC-ABS, Colour: Light grey

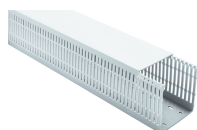
Article number	Article name	GTIN (EAN)	Packaging unit
<u>17942.6</u>	VK-HF 60x80 K LG	4044211199159	36 M

##INVERSE##CONTA-CONNECT



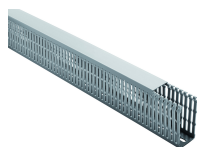
Cabling duct, Mounting type: Adhere, Width: 80 mm, Height: 80 mm, Material: PC-ABS, Colour: Light grey

Article number	Article name	GTIN (EAN)	Packaging unit
<u>17943.6</u>	VK-HF 80x80 K LG	4044211199166	24 M



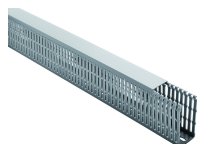
Cabling duct, Mounting type: Adhere, Width: 100 mm, Height: 80 mm, Material: PC-ABS, Colour: Light grey

Article number	Article name	GTIN (EAN)	Packaging unit
<u>17944.6</u>	VK-HF 100x80 K LG	4044211199173	24 M



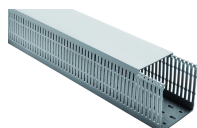
Cabling duct with cover, Mounting type: Rivets, Width: 30 mm, Height: 30 mm, Material: PVC-U, Colour: Grey

Article number	Article name	GTIN (EAN)	Packaging unit
<u>17800.6</u>	VK 25x30 GR	4044211198176	100 M



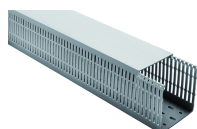
Cabling duct with cover, Mounting type: Rivets, Width: 25 mm, Height: 40 mm, Material: PVC-U, Colour: Grey

Article number	Article name	GTIN (EAN)	Packaging unit
<u>17801.6</u>	VK 25x40 GR	4044211198183	100 M



Cabling duct with cover, Mounting type: Rivets, Width: 60 mm, Height: 60 mm, Material: PVC-U, Colour: Grey

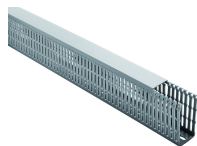
Article number	Article name	GTIN (EAN)	Packaging unit
<u>17806.6</u>	VK 60x60 GR	4044211198237	24 M



Cabling duct with cover, Mounting type: Rivets, Width: 80 mm, Height: 60 mm, Material: PVC-U, Colour: Grey

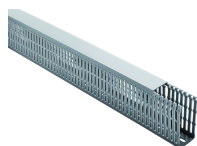
Article number	Article name	GTIN (EAN)	Packaging unit
<u>17807.6</u>	VK 80x60 GR	4044211198244	28 M

##INVERSE##CONTA-CONNECT



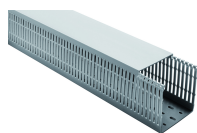
Cabling duct with cover, Mounting type: Rivets, Width: 25 mm, Height: 80 mm, Material: PVC-U, Colour: Grey

Article number	Article name	GTIN (EAN)	Packaging unit
<u>17810.6</u>	VK 25x80 GR	4044211198275	56 M



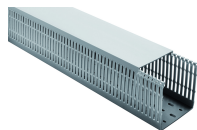
Cabling duct with cover, Mounting type: Rivets, Width: 40 mm, Height: 80 mm, Material: PVC-U, Colour: Grey

Article number	Article name	GTIN (EAN)	Packaging unit
<u>17811.6</u>	VK 40x80 GR	4044211198282	40 M



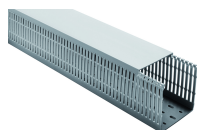
Cabling duct with cover, Mounting type: Rivets, Width: 80 mm, Height: 80 mm, Material: PVC-U, Colour: Grey

Article number	Article name	GTIN (EAN)	Packaging unit
<u>17813.6</u>	VK 80x80 GR	4044211198305	20 M



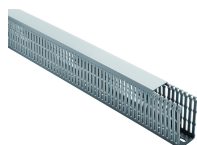
Cabling duct with cover, Mounting type: Rivets, Width: 100 mm, Height: 80 mm, Material: PVC-U, Colour: Grey

Article number	Article name	GTIN (EAN)	Packaging unit
<u>17814.6</u>	VK 100x80 GR	4044211198312	16 M



Cabling duct with cover, Mounting type: Rivets, Width: 100 mm, Height: 100 mm, Material: PVC-U, Colour: Grey

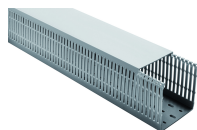
Article number	Article name	GTIN (EAN)	Packaging unit
<u>17820.6</u>	VK 100x100 GR	4044211198374	24 M



Cabling duct with cover, Mounting type: Rivets, Width: 40 mm, Height: 40 mm, Material: PVC-U, Colour: Grey

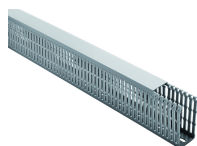
Article number	Article name	GTIN (EAN)	Packaging unit
<u>17802.6</u>	VK 40x40 GR	4044211198190	52 M

##INVERSE##CONTA-CONNECT



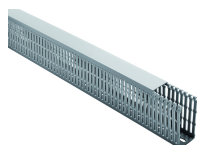
Cabling duct with cover, Mounting type: Rivets, Width: 60 mm, Height: 40 mm, Material: PVC-U, Colour: Grey

Article number	Article name	GTIN (EAN)	Packaging unit
<u>17803.6</u>	VK 60x40 GR	4044211198206	36 M



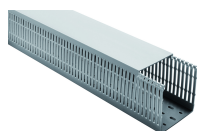
Cabling duct with cover, Mounting type: Rivets, Width: 25 mm, Height: 60 mm, Material: PVC-U, Colour: Grey

Article number	Article name	GTIN (EAN)	Packaging unit
<u>17804.6</u>	VK 25x60 GR	4044211198213	60 M



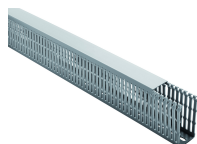
Cabling duct with cover, Mounting type: Rivets, Width: 40 mm, Height: 60 mm, Material: PVC-U, Colour: Grey

Article number	Article name	GTIN (EAN)	Packaging unit
<u>17805.6</u>	VK 40x60 GR	4044211198220	36 M



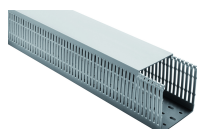
Cabling duct with cover, Mounting type: Rivets, Width: 120 mm, Height: 60 mm, Material: PVC-U, Colour: Grey

Article number	Article name	GTIN (EAN)	Packaging unit
<u>17809.6</u>	VK 120x60 GR	4044211198268	16 M



Cabling duct with cover, Mounting type: Rivets, Width: 40 mm, Height: 100 mm, Material: PVC-U, Colour: Grey

Article number	Article name	GTIN (EAN)	Packaging unit
<u>17817.6</u>	VK 40x100 GR	4044211198343	28 M



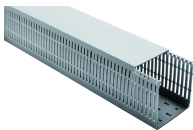
Cabling duct with cover, Mounting type: Rivets, Width: 60 mm, Height: 100 mm, Material: PVC-U, Colour: Grey

Article number	Article name	GTIN (EAN)	Packaging unit
<u>17818.6</u>	VK 60x100 GR	4044211198350	36 M

Data sheet

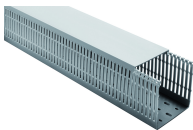
17897.4 SN-PA 5 BK

##INVERSE##CONTA-CONNECT



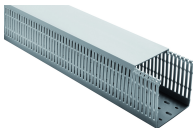
Cabling duct with cover, Mounting type: Rivets, Width: 60 mm, Height: 80 mm, Material: PVC-U, Colour: Grey

Article number	Article name	GTIN (EAN)	Packaging unit
<u>17812.6</u>	VK 60x80 GR	4044211198299	24 M



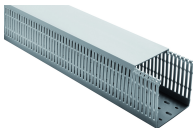
Cabling duct with cover, Mounting type: Rivets, Width: 120 mm, Height: 80 mm, Material: PVC-U, Colour: Grey

Article number	Article name	GTIN (EAN)	Packaging unit
<u>17815.6</u>	VK 120x80 GR	4044211198329	12 M



Cabling duct with cover, Mounting type: Rivets, Width: 80 mm, Height: 100 mm, Material: PVC-U, Colour: Grey

Article number	Article name	GTIN (EAN)	Packaging unit
<u>17819.6</u>	VK 80x100 GR	4044211198367	24 M



Cabling duct with cover, Mounting type: Rivets, Width: 150 mm, Height: 100 mm, Material: PVC-U, Colour: Grey

Article number	Article name	GTIN (EAN)	Packaging unit
<u>17821.6</u>	VK 150x100 GR	4044211198381	16 M