

End plate, Width: 1.5 mm, Colour: Grey

RAL: Ähnlich 7035

Business data

Article number	<u>27103.6</u>
Article name	PAP 2,5/2A GR
GTIN (EAN)	4044211224448
Packaging unit	20
Quantity unit	PC
Weight per piece (not including packaging)	1.62 g
Weight per piece (including packaging)	1.84 g
Unit of weight	G
Prio-Article	27103.6
Product description	End plate

Technical data

Dimensions

Length	48.5 mm
Width	1.5 mm
Height	28.7 mm

Materials

Material	Polyamide 6.6
Flammability class UL 94	V-0
Working temperature, min.	-40 °C
Working temperature, max.	120 °C

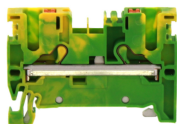
Environmental Product Compliance

REACH Conform	yes
REACH Reference date	2024-01-23
REACH Candidate Substance Note	No
RoHS Conform	yes

Media

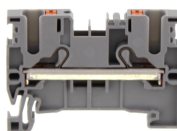
Accessories

Terminal blocks



Protective earth terminal, Push-in connection, Mounting type: Mounting rail TS 35/7.5,
Rated cross-section: 2.5 mm², Width: 5.1 mm, Colour: Green-yellow

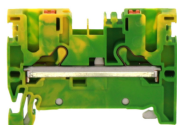
Article number	Article name	GTIN (EAN)	Packaging unit
<u>27007.2</u>	PSL 2,5/2A GNYE	4044211223809	50 ST



Feed-through terminal, Push-in connection, Mounting type: Mounting rail TS 35/7.5,
Rated cross-section: 2.5 mm², Width: 5.1 mm, Colour: Grey

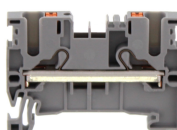
Article number	Article name	GTIN (EAN)	Packaging unit
<u>27006.6</u>	PRK 2,5/2A GR	4044211223793	50

##INVERSE##CONTA-CONNECT



Protective earth terminal, Push-in connection, Mounting type: Mounting rail TS 35/7.5,
Rated cross-section: 2.5 mm², Width: 5.1 mm, Colour: Green-yellow

Article number	Article name	GTIN (EAN)	Packaging unit
<u>27007.2</u>	PSL 2,5/2A GNYE	4044211223809	50 ST



Feed-through terminal, Push-in connection, Mounting type: Mounting rail TS 35/7.5,
Rated cross-section: 2.5 mm², Width: 5.1 mm, Colour: Grey

Article number	Article name	GTIN (EAN)	Packaging unit
<u>27006.6</u>	PRK 2,5/2A GR	4044211223793	50