

Insulated cross-connector, No. of poles: 10, Mounting type: Plug in, Width: 119.9 mm, Colour: Red

Business data

| | |
|--|---------------------------|
| Article number | <u>27151.9</u> |
| Article name | PQI 4/20 RD |
| GTIN (EAN) | 4044211225339 |
| Packaging unit | 5 |
| Quantity unit | PC |
| Weight per piece (not including packaging) | 18.6 g |
| Weight per piece (including packaging) | 19.2 g |
| Unit of weight | G |
| Customs number | 85389099 |
| Country of origin | DE |
| Prio-Article | 27151.9 |
| Product description | Insulated cross-connector |

Technical data

Dimensions

| | |
|------------|----------|
| Length | 4 mm |
| Width | 119.9 mm |
| Height | 19.4 mm |
| Pitch size | 6.1 mm |

Ratings

| | |
|----------------------|-------------------|
| Max. voltage | 800 V |
| Rated current | 32 A |
| Current load, max. | 32 A |
| Rated cross-section | 4 mm ² |
| Contamination degree | 3 |

Connection data

| | |
|--------------|----|
| No. of poles | 20 |
|--------------|----|

Materials

| | |
|---------------------------|---------------|
| Insulation housing | Polyamide 6.6 |
| Flammability class UL 94 | V-0 |
| Working temperature, min. | -40 °C |
| Working temperature, max. | 120 °C |

Further technical data

| | |
|-------------------------------|---------|
| Mounting type | Plug in |
| Insulation available | ✓ |
| Touch protection is available | ✓ |
| Number of bridged terminals | 20 |

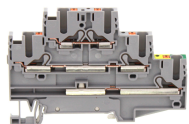
Environmental Product Compliance

| | |
|--------------------------------|------------|
| REACH Conform | yes |
| REACH Reference date | 2024-01-23 |
| REACH Candidate Substance Note | No |
| RoHS Conform | yes |

Media

Accessories

##INVERSE##CONTA-CONNECT



Three-level initiator terminal |Multi-wire terminal, Push-in connection, Mounting type: Mounting rail TS 35/7.5, Rated cross-section: 2.5 mm², Width: 5.1 mm, Colour: Grey

| Article number | Article name | GTIN (EAN) | Packaging unit |
|----------------|---------------------|---------------|----------------|
| <u>27048.6</u> | PIKD 2,5/1PE/L/L GR | 4044211227173 | 50 ST |



Protective earth terminal, Push-in connection, Mounting type: Mounting rail TS 35/7.5, Rated cross-section: 4 mm², Width: 6.1 mm, Colour: Green-yellow

| Article number | Article name | GTIN (EAN) | Packaging unit |
|----------------|---------------|---------------|----------------|
| <u>27013.2</u> | PSL 4/2A GNYE | 4044211215804 | 50 ST |



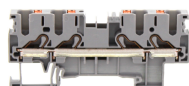
Protective earth terminal, Push-in connection, Mounting type: Mounting rail TS 35/7.5, Rated cross-section: 4 mm², Width: 6.1 mm, Colour: Green-yellow

| Article number | Article name | GTIN (EAN) | Packaging unit |
|----------------|---------------|---------------|----------------|
| <u>27015.2</u> | PSL 4/3A GNYE | 4044211215842 | 50 ST |



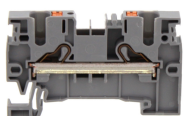
Protective earth terminal, Push-in connection, Mounting type: Mounting rail TS 35/7.5, Rated cross-section: 4 mm², Width: 6.1 mm, Colour: Green-yellow

| Article number | Article name | GTIN (EAN) | Packaging unit |
|----------------|---------------|---------------|----------------|
| <u>27017.2</u> | PSL 4/4A GNYE | 4044211215880 | 50 ST |



Feed-through terminal, Push-in connection, Mounting type: Mounting rail TS 35/7.5, Rated cross-section: 4 mm², Width: 6.1 mm, Colour: Grey

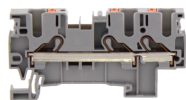
| Article number | Article name | GTIN (EAN) | Packaging unit |
|----------------|--------------|---------------|----------------|
| <u>27016.6</u> | PRK 4/4A GR | 4044211215873 | 50 |



Feed-through terminal, Push-in connection, Mounting type: Mounting rail TS 35/7.5, Rated cross-section: 4 mm², Width: 6.1 mm, Colour: Grey

| Article number | Article name | GTIN (EAN) | Packaging unit |
|----------------|--------------|---------------|----------------|
| <u>27012.6</u> | PRK 4/2A GR | 4044211215774 | 50 |

##INVERSE##CONTA-CONNECT



Feed-through terminal, Push-in connection, Mounting type: Mounting rail TS 35/7.5, Rated cross-section: 4 mm², Width: 6.1 mm, Colour: Grey

| Article number | Article name | GTIN (EAN) | Packaging unit |
|----------------|--------------|---------------|----------------|
| <u>27014.6</u> | PRK 4/3A GR | 4044211215835 | 50 |



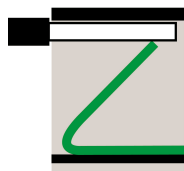
Protective-earth double-level terminal, Push-in connection, Mounting type: Mounting rail TS 35/7.5, Rated cross-section: 4 mm², Width: 6.1 mm, Colour: Green-yellow

| Article number | Article name | GTIN (EAN) | Packaging unit |
|----------------|--------------|---------------|----------------|
| <u>27071.2</u> | PSLD 4 GNYE | 4044211246457 | 50 ST |



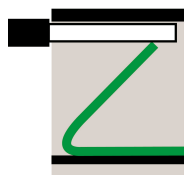
Protective-earth double-level terminal, Push-in connection, Mounting type: Mounting rail TS 35/7.5, Rated cross-section: 4 mm², Width: 6.1 mm, Colour: Green-yellow

| Article number | Article name | GTIN (EAN) | Packaging unit |
|----------------|----------------|---------------|----------------|
| <u>27074.2</u> | PSLD 4/3A GNYE | 4044211246440 | 50 ST |



Double-level terminal

| Article number | Article name | GTIN (EAN) | Packaging unit |
|----------------|--------------|---------------|----------------|
| <u>27072</u> | PRKD 4/SV | 4044211246792 | 50 ST |

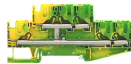


Double-level terminal

| Article number | Article name | GTIN (EAN) | Packaging unit |
|----------------|--------------|---------------|----------------|
| <u>27075</u> | PRKD 4/3A/SV | 4044211246488 | 50 ST |

##INVERSE##CONTA-CONNECT

Protective-earth double-level terminal, Push-in connection, Mounting type: Mounting rail
TS 35/7.5, Rated cross-section: 4 mm², Width: 6.1 mm, Colour: Green-yellow



| Article number | Article name | GTIN (EAN) | Packaging unit |
|----------------|----------------|---------------|----------------|
| <u>27074.2</u> | PSLD 4/3A GNYE | 4044211246440 | 50 ST |