

# Data sheet

## 27201.0 SVBA 115A



Screw-distributor block, Screw connection, Mounting type: Mounting rail TS 35/7.5 and mounting surface, Rated cross-section of input: 50 mm<sup>2</sup>, Rated cross-section of output: 25 mm<sup>2</sup>, Colour: Dark grey

### Business data

Article number	<u>27201.0</u>
Article name	SVBA 115A
GTIN (EAN)	4044211218348
Packaging unit	1
Quantity unit	PC
Weight per piece (not including packaging)	113 g
Weight per piece (including packaging)	133 g
Unit of weight	G
Customs number	85369010
Country of origin	EU
Product description	Screw-type distribution block
Colour	Dark grey

---

### Technical data

---

#### Dimensions

Length	89.5 mm
Width	36 mm
Height	49 mm
Height TS 35/7.5	52 mm

#### Ratings

Rated voltage AC	1000 V
Rated voltage DC	1500 V
Rated current Cu	125 A
Rated current Al	100 A
Input: rated cross section	50 mm <sup>2</sup>
Output: rated cross section	25 mm <sup>2</sup>
Overvoltage category	III
Contamination degree	3
Maximum power dissipation for nominal condition	4 W

### Technical data

#### Connection data

Connection principle	Screw connection
Connections	7
Number of inputs	1
Number of outputs	6
Input: wire cross-section rigid, min.	2.5 mm <sup>2</sup>
Input: wire cross-section rigid, max.	50 mm <sup>2</sup>
Input: wire cross-section stranded, min.	2.5 mm <sup>2</sup>
Input: wire cross-section stranded, max.	35 mm <sup>2</sup>
Input: wire cross-section stranded, with wire-endferrules, min.	2.5 mm <sup>2</sup>
Input: wire cross-section stranded, with wire-endferrules, max.	35 mm <sup>2</sup>
Input: wire cross-section rigid AWG, min.	14
Input: wire cross-section rigid AWG, max.	1
Input: wire cross-section stranded AWG, min.	14
Input: wire cross-section stranded AWG, max.	2
Input: wire cross-section stranded, with wire-endferrules AWG, min.	14
Input: wire cross-section stranded, with wire-endferrules AWG, max.	2
Input: diameter	10.5 mm
Input: stripping length	20 mm
Input: screw head	Inner hex (Allen)
Input: torque, max.	4 Nm
Output: wire cross-section rigid, min.	2.5 mm <sup>2</sup>
Output: wire cross-section rigid, max.	25 mm <sup>2</sup>
Output: wire cross-section stranded, min.	2.5 mm <sup>2</sup>
Output: wire cross-section stranded, max.	16 mm <sup>2</sup>
Output: wire cross-section stranded, with wire-end ferrules, min.	2.5 mm <sup>2</sup>
Output: wire cross-section stranded, with wire-end ferrules, max.	16 mm <sup>2</sup>
Output: wire cross-section rigid AWG, min.	14
Output: wire cross-section rigid AWG, max.	4
Output: wire cross-section stranded AWG, min.	14
Output: wire cross-section stranded AWG, max.	4
Output: wire cross-section stranded, with wire-end ferrules AWG, min.	14
Output: wire cross-section stranded, with wire-end ferrules AWG, max.	6
Output: diameter	7 mm
Output: stripping length	10 mm
Output: screw head	Inner hex (Allen)
Output: torque, max.	2 Nm

---

### Technical data

---

#### Materials

Insulation housing	Polyamide 6.6
Flammability class UL 94	V-0
Working temperature, min.	-40 °C
Working temperature, max.	90 °C

#### Further technical data

Mounting type	Mounting rail TS 35/7.5 and mounting surface
Degree of protection	IP20
SCCR rating	10

#### Environmental Product Compliance

REACH Conform	yes
REACH Reference date	2024-01-23
REACH Candidate Substance Note	No
RoHS Conform	yes

### Approvals

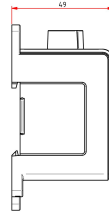
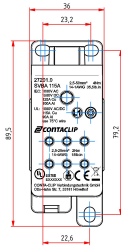
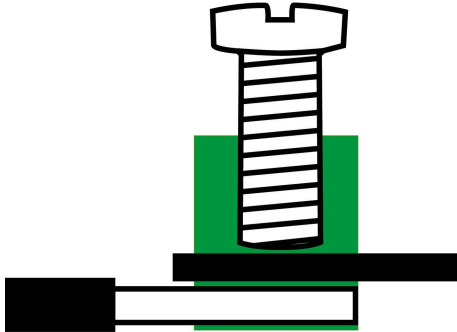
#### UL Recognized

UL approval	UL 1953
UL Usegroup B: rated voltage	1000 V
UL Usegroup B: rated current Cu	115 A
UL Usegroup B: rated current Al	90 A
UL Usegroup C: rated voltage	1000 V
UL Usegroup C: rated current Cu	115 A
cUL Usegroup C: rated current Al	90 A
UL input: wire cross-section AWG, min.	14
UL input: wire cross-section AWG, max.	1
UL output: wire cross-section AWG, min.	14
UL output: wire cross-section AWG, max.	4
UL wire material	Cu, Al
UL factory wiring	1
UL field wiring	1
UL Recognized	1

# Data sheet

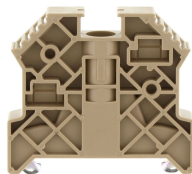
## 27201.0 SVBA 115A

### Media



### Accessories

#### End stop



End stop, Mounting type: Mounting rail TS 35/7.5, Width: 9.5 mm, Colour: Beige

Article number	Article name	GTIN (EAN)	Packaging unit
<u>2828.0</u>	ES 35/K/ST BG	4044211055547	50

#### Marking plate



Marking plate, Colour: Green

Article number	Article name	GTIN (EAN)	Packaging unit
<u>27205.1</u>	MP-SVBA GN	4044211218409	10