

Data sheet

27203.0 SVBA 255A



Screw-distributor block, Screw connection, Mounting type: Mounting rail TS 35/7.5 and mounting surface, Rated cross-section of input: 120 mm², Rated cross-section of output: 35 mm², Colour: Dark grey

Business data

Article number	<u>27203.0</u>
Article name	SVBA 255A
GTIN (EAN)	4044211218362
Packaging unit	1
Quantity unit	PC
Weight per piece (not including packaging)	284 g
Weight per piece (including packaging)	304 g
Unit of weight	G
Customs number	85369010
Country of origin	DE
Product description	Screw-type distribution block
Colour	Dark grey

Technical data

Dimensions

Length	114 mm
Width	54 mm
Height	60.7 mm
Height TS 35/7.5	63.7 mm

Ratings

Rated voltage AC	1000 V
Rated voltage DC	1500 V
Rated current Cu	250 A
Rated current Al	200 A
Input: rated cross section	120 mm ²
Output: rated cross section	35 mm ²
Overvoltage category	III
Contamination degree	3
Maximum power dissipation for nominal condition	8 W

Technical data

Connection data

Connection principle	Screw connection
Connections	7
Number of inputs	1
Number of outputs	6
Input: wire cross-section rigid, min.	35 mm ²
Input: wire cross-section rigid, max.	120 mm ²
Input: wire cross-section stranded, min.	35 mm ²
Input: wire cross-section stranded, max.	95 mm ²
Input: wire cross-section stranded, with wire-endferrules, min.	35 mm ²
Input: wire cross-section stranded, with wire-endferrules, max.	95 mm ²
Input: wire cross-section rigid AWG, min.	2
Input: wire cross-section rigid AWG, max.	250 Kcmil
Input: wire cross-section stranded AWG, min.	2
Input: wire cross-section stranded AWG, max.	4/0
Input: wire cross-section stranded, with wire-endferrules AWG, min.	2
Input: wire cross-section stranded, with wire-endferrules AWG, max.	4/0
Input: diameter	16.5 mm
Input: stripping length	30 mm
Input: screw head	Inner hex (Allen)
Input: torque, max.	31 Nm
Output: wire cross-section rigid, min.	2.5 mm ²
Output: wire cross-section rigid, max.	35 mm ²
Output: wire cross-section stranded, min.	2.5 mm ²
Output: wire cross-section stranded, max.	25 mm ²
Output: wire cross-section stranded, with wire-end ferrules, min.	2.5 mm ²
Output: wire cross-section stranded, with wire-end ferrules, max.	25 mm ²
Output: wire cross-section rigid AWG, min.	14
Output: wire cross-section rigid AWG, max.	2
Output: wire cross-section stranded AWG, min.	14
Output: wire cross-section stranded AWG, max.	4
Output: wire cross-section stranded, with wire-end ferrules AWG, min.	14
Output: wire cross-section stranded, with wire-end ferrules AWG, max.	4
Output: diameter	8.5 mm
Output: stripping length	20 mm
Output: screw head	Inner hex (Allen)
Output: torque, max.	3.5 Nm

Technical data

Materials

Insulation housing	Polyamide 6.6
Flammability class UL 94	V-0
Working temperature, min.	-40 °C
Working temperature, max.	90 °C

Further technical data

Mounting type	Mounting rail TS 35/7.5 and mounting surface
Degree of protection	IP20
SCCR rating	10

Environmental Product Compliance

REACH Conform	yes
REACH Reference date	2024-01-23
REACH Candidate Substance Note	No
RoHS Conform	yes

Approvals

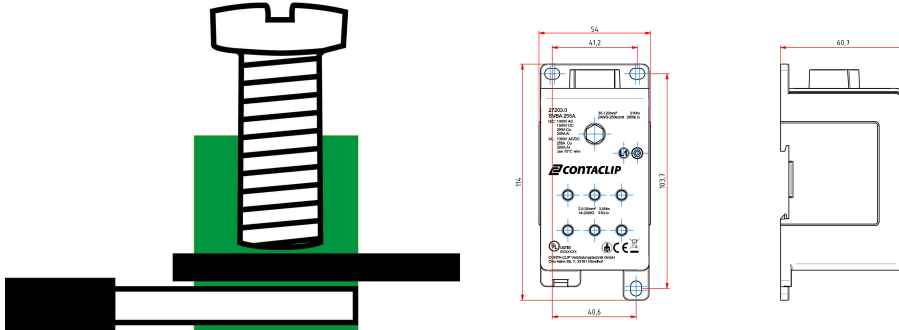
UL Recognized

UL approval	UL 1953
UL Usegroup B: rated voltage	1000 V
UL Usegroup B: rated current Cu	255 A
UL Usegroup B: rated current Al	205 A
UL Usegroup C: rated voltage	1000 V
UL Usegroup C: rated current Cu	255 A
cUL Usegroup C: rated current Al	205 A
UL input: wire cross-section AWG, min.	2
UL input: wire cross-section AWG, max.	250 Kcmil
UL output: wire cross-section AWG, min.	14
UL output: wire cross-section AWG, max.	2
UL wire material	Cu, Al
UL factory wiring	1
UL field wiring	1
UL Recognized	1

Data sheet

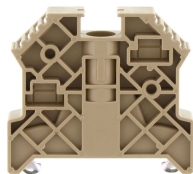
27203.0 SVBA 255A

Media



Accessories

End stop



End stop, Mounting type: Mounting rail TS 35/7.5, Width: 9.5 mm, Colour: Beige

Article number	Article name	GTIN (EAN)	Packaging unit
<u>2828.0</u>	ES 35/K/ST BG	4044211055547	50

Marking plate



Marking plate, Colour: Green

Article number	Article name	GTIN (EAN)	Packaging unit
<u>27205.1</u>	MP-SVBA GN	4044211218409	10