

Data sheet

27206.0 SVBA 1100A



Screw-distributor block, Screw connection, Mounting type; Mounting surface, Rated cross-section of input: 500 mm², Rated cross-section of output: 300 mm², Colour: Light grey

RAL: 9018

Business data

Article number	<u>27206.0</u>
Article name	SVBA 1100A
GTIN (EAN)	4044211218416
Packaging unit	1
Quantity unit	PC
Weight per piece (not including packaging)	2109 g
Weight per piece (including packaging)	2119 g
Unit of weight	G
Customs number	85369010
Country of origin	EU
Product description	Screw-type distribution block
Colour	Light grey

Technical data

Dimensions

Length	202 mm
Width	90 mm
Height	107 mm

Ratings

Rated voltage AC	1000 V
Rated voltage DC	1500 V
Rated current Cu	1100 A
Rated current AI	900 A
Input: rated cross section	500 mm ²
Output: rated cross section	300 mm ²
Overvoltage category	III
Contamination degree	3
Maximum power dissipation for nominal condition	35.2 W

Technical data

Connection data

Connection principle	Screw connection
Connections	3
Number of inputs	1
Number of outputs	2
Input: wire cross-section rigid, min.	95 mm ²
Input: wire cross-section rigid, max.	500 mm ²
Input: wire cross-section stranded, min.	95 mm ²
Input: wire cross-section stranded, max.	500 mm ²
Input: wire cross-section stranded, with wire-endferrules, min.	95 mm ²
Input: wire cross-section stranded, with wire-endferrules, max.	500 mm ²
Input: wire cross-section rigid AWG, min.	3/0
Input: wire cross-section rigid AWG, max.	1000 Kcmil
Input: wire cross-section stranded AWG, min.	3/0
Input: wire cross-section stranded AWG, max.	1000 Kcmil
Input: wire cross-section stranded, with wire-endferrules AWG, min.	3/0
Input: wire cross-section stranded, with wire-endferrules AWG, max.	1000 Kcmil
Input: diameter	40 mm
Input: stripping length	68 mm
Input: screw head	Inner hex (Allen)
Input: torque, max.	80 Nm
Output: wire cross-section rigid, min.	50 mm ²
Output: wire cross-section rigid, max.	300 mm ²
Output: wire cross-section stranded, min.	50 mm ²
Output: wire cross-section stranded, max.	240 mm ²
Output: wire cross-section stranded, with wire-end ferrules, min.	50 mm ²
Output: wire cross-section stranded, with wire-end ferrules, max.	240 mm ²
Output: wire cross-section rigid AWG, max.	550 Kcmil
Output: wire cross-section stranded AWG, max.	450 Kcmil
Output: wire cross-section stranded, with wire-end ferrules AWG, max.	450 Kcmil
Output: diameter	26 mm
Output: stripping length	36 mm
Output: screw head	Inner hex (Allen)
Output: torque, max.	50 Nm

Technical data

Materials

Insulation housing	Polyamide 6.6
Flammability class UL 94	V-0
Working temperature, min.	-40 °C
Working temperature, max.	90 °C

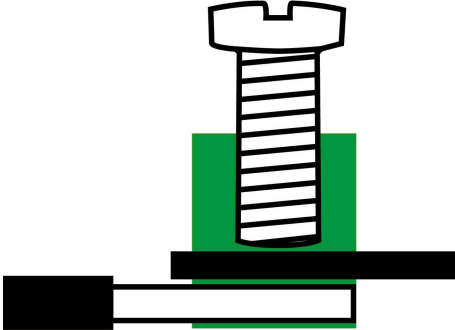
Further technical data

Mounting type	Mounting face
Degree of protection	IP20
Short-circuit current resistance ICW over 1 s	60 kA
SCCR rating	60

Environmental Product Compliance

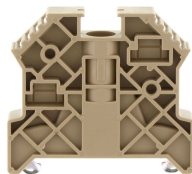
REACH Conform	yes
REACH Reference date	2024-01-23
REACH Candidate Substance Note	No
RoHS Conform	yes

Media



Accessories

End stop



End stop, Mounting type: Mounting rail TS 35/7.5, Width: 9.5 mm, Colour: Beige

Article number	Article name	GTIN (EAN)	Packaging unit
<u>2828.0</u>	ES 35/K/ST BG	4044211055547	50

Marking plate



Marking plate, Colour: Green

Article number	Article name	GTIN (EAN)	Packaging unit
<u>27205.1</u>	MP-SVBA GN	4044211218409	10