



Screw-distributor block, Screw connection, Mounting type: Mounting rail TS 35/7.5 and mounting surface, Rated cross-section of input: 150 mm², Rated cross-section of output: 150 mm², Colour: Blue

RAL: 9018

Business data

Article number	<u>27211.0</u>
Article name	SVBKA 150 LG
GTIN (EAN)	4044211218546
Packaging unit	10
Quantity unit	PC
Weight per piece (not including packaging)	103.4 g
Weight per piece (including packaging)	104.4 g
Unit of weight	G
Customs number	85369010
Country of origin	EU
Product description	Screw-type distribution block

Technical data

Dimensions

Length	84 mm
Width	30.9 mm
Height	54 mm
Height TS 35/7.5	57 mm

Ratings

Rated voltage AC	1000 V
Rated voltage DC	1000 V
Rated current Cu	320 A
Rated current Al	290 A
Input: rated cross section	150 mm ²
Output: rated cross section	150 mm ²
Overvoltage category	III
Contamination degree	3
Maximum power dissipation for nominal condition	10.24 W

Technical data

Connection data

Connection principle	Screw connection
Connections	2
Number of inputs	1
Number of outputs	1
Input: wire cross-section rigid, min.	25 mm ²
Input: wire cross-section rigid, max.	150 mm ²
Input: wire cross-section stranded, min.	25 mm ²
Input: wire cross-section stranded, max.	120 mm ²
Input: wire cross-section stranded, with wire-endferrules, min.	25 mm ²
Input: wire cross-section stranded, with wire-endferrules, max.	120 mm ²
Input: wire cross-section rigid AWG, min.	3
Input: wire cross-section rigid AWG, max.	350 Kcmil
Input: wire cross-section stranded AWG, min.	3
Input: wire cross-section stranded AWG, max.	4/0
Input: wire cross-section stranded, with wire-endferrules AWG, min.	3
Input: wire cross-section stranded, with wire-endferrules AWG, max.	4/0
Input: stripping length	20 mm
Input: screw head	Inner hex (Allen)
Input: torque, min.	14 Nm
Input: torque, max.	35 Nm
Output: wire cross-section rigid, min.	25 mm ²
Output: wire cross-section rigid, max.	150 mm ²
Output: wire cross-section stranded, min.	25 mm ²
Output: wire cross-section stranded, max.	120 mm ²
Output: wire cross-section stranded, with wire-end ferrules, min.	25 mm ²
Output: wire cross-section stranded, with wire-end ferrules, max.	120 mm ²
Output: wire cross-section rigid AWG, min.	3
Output: wire cross-section rigid AWG, max.	250 Kcmil
Output: wire cross-section stranded AWG, min.	3
Output: wire cross-section stranded AWG, max.	4/0
Output: wire cross-section stranded, with wire-end ferrules AWG, min.	3
Output: wire cross-section stranded, with wire-end ferrules AWG, max.	4/0
Output: stripping length	20 mm
Output: screw head	Inner hex (Allen)
Output: torque, min.	14 Nm
Output: torque, max.	35 Nm

Technical data

Materials

Insulation housing	Polyamide 6.6
Flammability class UL 94	V-0
Working temperature, min.	-40 °C
Working temperature, max.	120 °C

Further technical data

Mounting type	Mounting rail TS 35/7.5 and mounting surface
Degree of protection	IP20 (for largest wire cross-section)

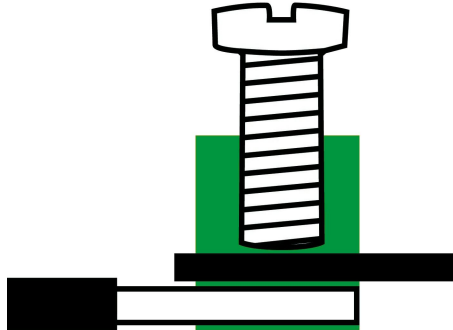
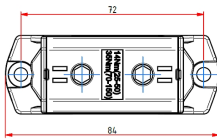
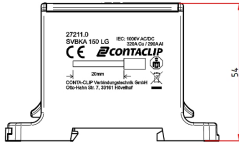
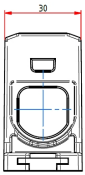
Environmental Product Compliance

REACH Conform	yes
REACH Reference date	2023-06-14, 2024-01-23
REACH Candidate Substance Note	No
RoHS Conform	yes

Data sheet

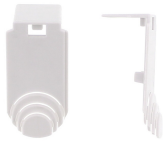
27211.0 SVBKA 150 LG

Media



Accessories

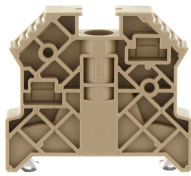
Cover



Touch protection, Length: 43.9 mm, Width: 22 mm, Colour: Light grey

Article number	Article name	GTIN (EAN)	Packaging unit
<u>27215.0</u>	BS-SVBKA 150 LG	4044211218621	10 ST

End stop



End stop, Mounting type: Mounting rail TS 35/7.5, Width: 9.5 mm, Colour: Beige

Article number	Article name	GTIN (EAN)	Packaging unit
<u>2828.0</u>	ES 35/K/ST BG	4044211055547	50