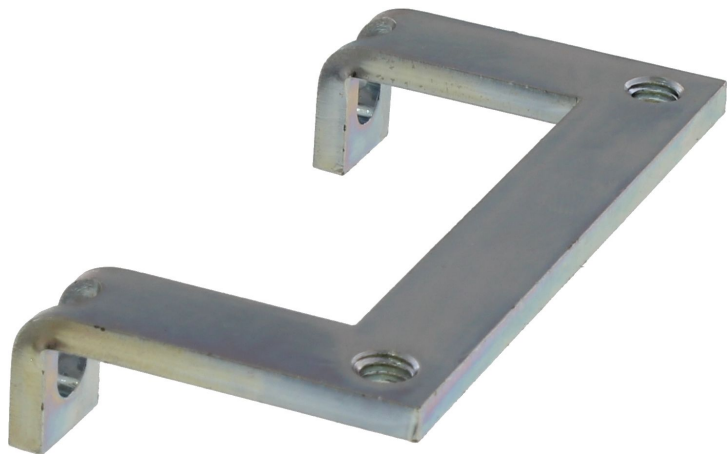


# Data sheet

## 28623.0 KDS-EMV-SAB 1-4



Shield-connection rail enabling mounting of shield connection clips directly on cable entry system KDS,  
Mounting type: Screw, Length: 35,3 mm, Width: 68 mm, Height: 16 mm, Profile: 10x3 mm

### Business data

Article number	28623.0
Article name	KDS-EMV-SAB 1-4
GTIN (EAN)	4044211219628
Packaging unit	1
Quantity unit	PC
Weight per piece (not including packaging)	30 g
Weight per piece (including packaging)	33 g
Unit of weight	G
Customs number	73269098
Country of origin	DE
Product description	Shield-connection clip

# Data sheet

## 28623.0 KDS-EMV-SAB 1-4



### Technical data

#### Dimensions

Length	35.3 mm
Width	68 mm
Height	16 mm

#### Materials

Material	Steel
----------	-------

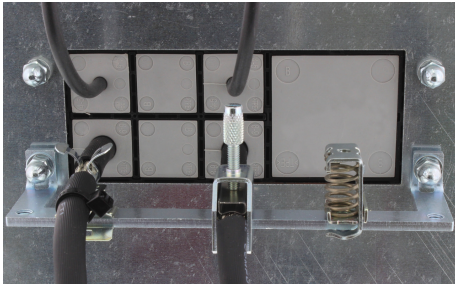
#### Environmental Product Compliance

REACH Conform	yes
REACH Reference date	2023-06-14
REACH Candidate Substance Note	No
RoHS Conform	yes

---

### Media

---



Accessories

##INVERSE##CONTA-CABLE



Cable entry with injected seal, Mounting type: Screws, Length: 73 mm, Width: 39 mm, IP 66, Colour: Black

Article number	Article name	GTIN (EAN)	Packaging unit
<a href="#">28700.4</a>	KDS-SR-FB1/A BK	4044211225476	10 ST



Cable entry with foamed-in seal, Mounting type: Screws, Length: 81 mm, Width: 70 mm, IP 66, Colour: Black

Article number	Article name	GTIN (EAN)	Packaging unit
<a href="#">28506.4</a>	KDS-SR 1-4 BK	4044211210823	1 ST



Cable entry set, IP66, Consisting of: 1 x KDSI-SR 1-4 BK, 1 x KDS-Inlay 4 BK

Article number	Article name	GTIN (EAN)	Packaging unit
<a href="#">28890.4</a>	KDSI-SET 1-4 BK	4044211242152	1 ST



Cable entry set, IP66, Consisting of: 1 x KDSI-SR 1-4 BK, 1 x KDS-Inlay 4 BK

Article number	Article name	GTIN (EAN)	Packaging unit
<a href="#">28890.4</a>	KDSI-SET 1-4 BK	4044211242152	1 ST



Cable entry set, IP66, Consisting of: 1 x KDSI-SR 1-4 BK, 1 x KDS-Inlay 4 BK

Article number	Article name	GTIN (EAN)	Packaging unit
<a href="#">28890.4</a>	KDSI-SET 1-4 BK	4044211242152	1 ST