



Cable entry with membrane for unassembled cables, Mounting type: Screw, Length: 147 mm, Width: 58 mm, IP66, Colour: Grey

RAL: Ähnlich 7035

Business data

Article number	<u>28633.6</u>
Article name	KES 16-1/24 GR
GTIN (EAN)	4044211219949
Packaging unit	10
Quantity unit	PC
Weight per piece (not including packaging)	109.9 g
Weight per piece (including packaging)	116.9 g
Unit of weight	G
Prio-Article	28633.6
Product description	Cable Entry

Technical data

Dimensions

Length	149.6 mm
Length of wall cutout	112 mm
Width	58 mm
Width of wall cutout	36 mm
Installation height	14.5 mm
Diameter of the screw holes	5.5 mm

Materials

Material	Polyamide 6.6
Glass-fibre reinforced	✓
Flammability class UL 94	V-0
Working temperature, min.	-40 °C
Working temperature, max.	90 °C
Sealing material	TPE
Halogen-free	✓
Silicone-free	✓

Further technical data

Mounting type	Screws
Degree of protection	IP66
NEMA Type	1, 12, 4x (indoor use only)
Number of screw holes	4
Fixing screws	M5 (ISO 4762 / DIN 912)
Torque of the fixing screws	3 Nm
Number of wires	16
Number of cables for cable diameters 3.2 - 6.3 mm	2
Number of cables for cable diameters 4.0 - 7.5 mm	9
Number of cables for cable diameters 5.5 - 10.5 mm	1
Number of cables for cable diameters 8.0 - 12.5 mm	1
Number of cables for cable diameters 12.0 - 16.2 mm	3

Environmental Product Compliance

REACH Conform	yes
REACH Reference date	2024-01-23
REACH Candidate Substance Note	No
RoHS Conform	yes

Approvals

cUL Recognized

cUL approval	C22.2 No. 14-18
--------------	-----------------

cUL File Number	E489821
-----------------	---------

cUL Recognized	1
----------------	---

UL Recognized

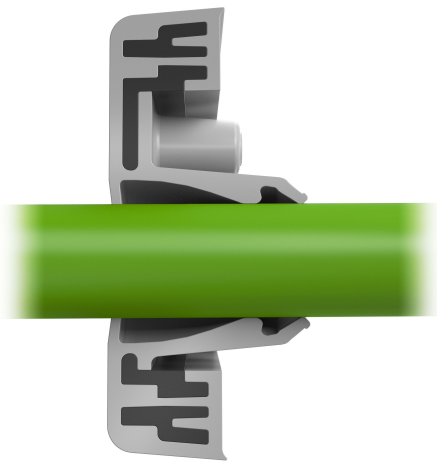
UL approval	UL 508A
-------------	---------

UL File Number	E489821
----------------	---------

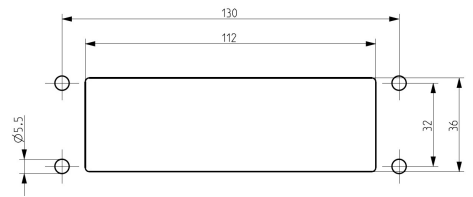
UL Recognized	1
---------------	---

UL Type Rating	1, 12, 4x (indoor use only)
----------------	-----------------------------

Media



C **RU**[®] **US**



Accessories

EMC brackets



Shield-connection rail enabling mounting of shield connection clips directly on cable entry system KDS and KES, Mounting type: Screw, Length: 35,3 mm, Width: 140 mm, Height: 16 mm, Profile: 10x3 mm

Article number	Article name	GTIN (EAN)	Packaging unit
<u>28626.0</u>	KDS-EMV-SAB 10/24	4044211219659	1 ST

Sheet-metal puncher



Sheet metal puncher for rectangular openings, Dimensions opening: 112 x 36 mm, Maximum wall thickness: 2.0 mm for stainless steel sheet, Material: steel

Article number	Article name	GTIN (EAN)	Packaging unit
<u>28752.0</u>	BL-VA KES	4044211221935	1 ST



Sheet metal puncher for rectangular openings, Dimensions opening: 112 x 36 mm, Maximum wall thickness: 2.0 mm for S 235 sheet, Material: steel

Article number	Article name	GTIN (EAN)	Packaging unit
<u>28744.0</u>	BL KES	4044211221942	1 ST