



Sheet metal punch for round cutouts, Cutout diameter: 25.4 mm, Maximum wall thickness: 2.0 mm for S 235 sheet metal, Material: steel

Business data

Article number	<u>28747.0</u>
Article name	BL KDS-KV M25
GTIN (EAN)	4044211222000
Packaging unit	1
Quantity unit	PC
Included in delivery	Punch and die (without lag screw)
Weight per piece (not including packaging)	125 g
Weight per piece (including packaging)	142 g
Unit of weight	G
Customs number	82073010
Country of origin	DE
Product description	Sheet-metal puncher

Technical data

Further technical data

Traction axis	7/16"-UNF / 11,1 x 50,0 mm
---------------	----------------------------

Dimensions

Length of wall cutout	25.4 mm
-----------------------	---------

Width of wall cutout	25.4 mm
----------------------	---------

Maximum material thickness for S 235 sheet metal	2 mm
--	------

Environmental Product Compliance

REACH Conform	yes
---------------	-----

REACH Reference date	2024-01-23
----------------------	------------

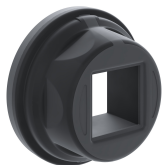
REACH Candidate Substance Note	No
--------------------------------	----

RoHS Conform	yes
--------------	-----

Media

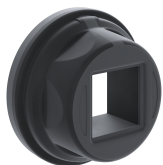
Accessories

##INVERSE##CONTA-CABLE



Round cable entry, Material: polyamide PA 6.6, glass-fibre reinforced | TPE, Colour: Black

Article number	Article name	GTIN (EAN)	Packaging unit
<u>28770.4</u>	KDS-R 20-32 BK	4044211234508	5 ST



Round cable entry, Material: polyamide PA 6.6, glass-fibre reinforced | TPE, Colour: Black

Article number	Article name	GTIN (EAN)	Packaging unit
<u>28770.4</u>	KDS-R 20-32 BK	4044211234508	5 ST



Thread and locking adapter, Material: Polyamide PA 6.6, glass-fibre reinforced, Colour: Black

Article number	Article name	GTIN (EAN)	Packaging unit
<u>28772.4</u>	KDS-RGA M25 BK	4044211234522	5 ST