

28751.0 BL KDS-KV M63

Sheet metal punch for round cutouts, Cutout diameter: 63.5 mm, Maximum wall thickness: 2.0 mm for S 235 sheet metal, Material: steel

Business data

Article number	<u>28751.0</u>
Article name	BL KDS-KV M63
GTIN (EAN)	4044211222048
Packaging unit	1
Quantity unit	PC
Included in delivery	Punch and die (without lag screw)
Weight per piece (not including packaging)	955 g
Weight per piece (including packaging)	980 g
Unit of weight	G
Customs number	82073010
Country of origin	DE
Product description	Sheet-metal puncher

Technical data

Further technical data

Traction axis	3/4"-UNF / 19,0 x 75 mm
---------------	-------------------------

Dimensions

Length of wall cutout	63.5 mm
-----------------------	---------

Width of wall cutout	63.5 mm
----------------------	---------

Maximum material thickness for S 235 sheet metal	2 mm
--	------

Environmental Product Compliance

REACH Conform	yes
---------------	-----

REACH Reference date	2024-01-23
----------------------	------------

REACH Candidate Substance Note	No
--------------------------------	----

RoHS Conform	yes
--------------	-----

Media

28751.0 BL KDS-KV M63

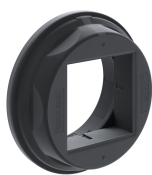
Accessories

##INVERSE##CONTA-CABLE



Split cable gland including counter nut, Thread type: metric, Material: PA 6.6, Protection: IP 66, Colour: Black

Article number	Article name	GTIN (EAN)	Packaging unit
<u>28615.4</u>	KDS-KV M63 BK	4044211208981	5 ST



Round cable entry, Material: polyamide PA 6.6, glass-fibre reinforced | TPE, Colour: Black

Article number	Article name	GTIN (EAN)	Packaging unit
<u>28774.4</u>	KDS-R 40-63 BK	4044211234546	5 ST



Thread and locking adapter, Material: Polyamide PA 6.6, glass-fibre reinforced, Colour: Black

Article number	Article name	GTIN (EAN)	Packaging unit
<u>28777.4</u>	KDS-RGA M63 BK	4044211234577	5 ST