

28766.0 BL SET M16-M63

Sheet metal punch set for round cutouts, includes hydraulic hand pump, 7 X sheet metal punches (M16, M20, M25, M32, M40, M50, M63), 2x tension axles, lock nut, plastic case, maximum wall thickness: 2.0 mm for S 235 sheet metal, material: steel

Business data

Article number	28766.0
Article name	BL SET M16-M63
GTIN (EAN)	4044211222390
Packaging unit	1
Quantity unit	PC
Included in delivery	Hydraulic hand pump, 7 X sheet metal punches M16-M63, 2x pull axles, lock nut, plastic case
Weight per piece (not including packaging)	7.2 g
Weight per piece (including packaging)	10.2 g
Unit of weight	KG
Customs number	82073010
Country of origin	DE
Product description	Hydraulic hand pump

Technical data

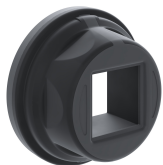
Environmental Product Compliance

REACH Conform	yes
REACH Reference date	2024-01-23
REACH Candidate Substance Note	No
RoHS Conform	yes

Media

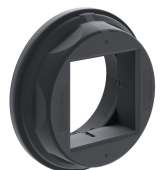
Accessories

##INVERSE##CONTA-CABLE



Round cable entry, Material: polyamide PA 6.6, glass-fibre reinforced | TPE, Colour: Black

Article number	Article name	GTIN (EAN)	Packaging unit
<u>28770.4</u>	KDS-R 20-32 BK	4044211234508	5 ST



Round cable entry, Material: polyamide PA 6.6, glass-fibre reinforced | TPE, Colour: Black

Article number	Article name	GTIN (EAN)	Packaging unit
<u>28774.4</u>	KDS-R 40-63 BK	4044211234546	5 ST