



Round cable entry, Material: polyamide PA 6.6, glass-fibre reinforced | TPE, Colour: Black

RAL: 9005

Business data

| | |
|--|----------------|
| Article number | <u>28774.4</u> |
| Article name | KDS-R 40-63 BK |
| GTIN (EAN) | 4044211234546 |
| Packaging unit | 5 |
| Quantity unit | PC |
| Weight per piece (not including packaging) | 30.9 g |
| Weight per piece (including packaging) | 37.4 g |
| Unit of weight | G |
| Customs number | 39259020 |
| Country of origin | DE |
| Product description | Cable Entry |
| Colour | Black |

Technical data

Dimensions

| | |
|---------------------|---------|
| Length | 80 mm |
| Width | 80 mm |
| Height | 21.5 mm |
| Installation height | 21.5 mm |

Thread

| | |
|-------------------|--------|
| Thread type | Metric |
| Thread size | 70 mm |
| Thread pitch | 1.5 mm |
| Thread length (L) | 7.2 mm |

Materials

| | |
|---------------------------|---------------|
| Material | Polyamide 6.6 |
| Glass-fibre reinforced | ✓ |
| Flammability class UL 94 | V-0 |
| Working temperature, min. | -40 °C |
| Working temperature, max. | 120 °C |
| Sealing material | TPE |
| Halogen-free | ✓ |
| Silicone-free | ✓ |

Further technical data

| | |
|----------------------|-----------------------------|
| Mounting type | Screws |
| Degree of protection | IP66 |
| Spanner width (AF) | 65 mm |
| NEMA Type | 1, 12, 4x (indoor use only) |

Environmental Product Compliance

| | |
|--------------------------------|------------|
| REACH Conform | yes |
| REACH Reference date | 2024-01-23 |
| REACH Candidate Substance Note | No |
| RoHS Conform | yes |

Approvals

cUL Recognized

| | |
|--------------|-----------------|
| cUL approval | C22.2 No. 14-18 |
|--------------|-----------------|

| | |
|-----------------|---------|
| cUL File Number | E489821 |
|-----------------|---------|

| | |
|----------------|---|
| cUL Recognized | 1 |
|----------------|---|

UL Recognized

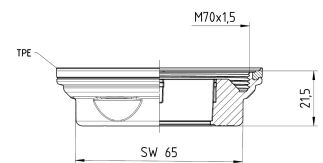
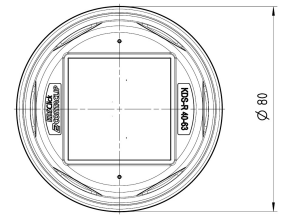
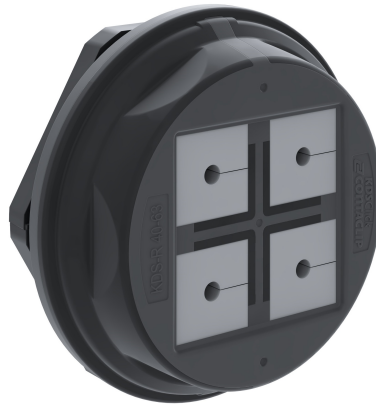
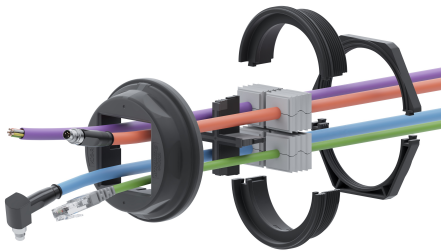
| | |
|-------------|---------|
| UL approval | UL 508A |
|-------------|---------|

| | |
|----------------|---------|
| UL File Number | E489821 |
|----------------|---------|

| | |
|---------------|---|
| UL Recognized | 1 |
|---------------|---|

| | |
|----------------|-----------------------------|
| UL Type Rating | 1, 12, 4x (indoor use only) |
|----------------|-----------------------------|

Media



Accessories

Inlays

Cable entry, Inlay, Mounting type: Plug in, IP 66, Colour: Black



| Article number | Article name | GTIN (EAN) | Packaging unit |
|----------------|----------------|---------------|----------------|
| <u>28516.4</u> | KDS-Inlay 1 BK | 4044211210847 | 5 ST |

Cable entry, Inlay, Mounting type: Plug in, IP 66, Colour: Black



| Article number | Article name | GTIN (EAN) | Packaging unit |
|----------------|----------------|---------------|----------------|
| <u>28517.4</u> | KDS-Inlay 2 BK | 4044211210854 | 5 ST |

Cable entry, Inlay, Mounting type: Plug in, IP 66, Colour: Black



| Article number | Article name | GTIN (EAN) | Packaging unit |
|----------------|----------------|---------------|----------------|
| <u>28518.4</u> | KDS-Inlay 4 BK | 4044211210861 | 5 ST |

28774.4 KDS-R 40-63 BK

Gewinde- und Verriegelungsadapter



Thread and locking adapter, Material: Polyamide PA 6.6, glass-fibre reinforced, Colour: Black

| Article number | Article name | GTIN (EAN) | Packaging unit |
|----------------|----------------|---------------|----------------|
| <u>28776.4</u> | KDS-RGA M50 BK | 4044211234560 | 5 ST |



Thread and locking adapter, Material: Polyamide PA 6.6, glass-fibre reinforced, Colour: Black

| Article number | Article name | GTIN (EAN) | Packaging unit |
|----------------|----------------|---------------|----------------|
| <u>28775.4</u> | KDS-RGA M40 BK | 4044211234553 | 5 ST |



Thread and locking adapter, Material: Polyamide PA 6.6, glass-fibre reinforced, Colour: Black

| Article number | Article name | GTIN (EAN) | Packaging unit |
|----------------|----------------|---------------|----------------|
| <u>28777.4</u> | KDS-RGA M63 BK | 4044211234577 | 5 ST |

Separable locknut



Separated counter nut, Thread type: metric, Material: PA 6.6, Colour: Black

| Article number | Article name | GTIN (EAN) | Packaging unit |
|----------------|--------------|---------------|----------------|
| <u>28619.4</u> | KDS-GM 40 BK | 4044211209025 | 5 ST |



Separated counter nut, Thread type: metric, Material: PA 6.6, Colour: Black

| Article number | Article name | GTIN (EAN) | Packaging unit |
|----------------|--------------|---------------|----------------|
| <u>28620.4</u> | KDS-GM 50 BK | 4044211209032 | 5 ST |



Separated counter nut, Thread type: metric, Material: PA 6.6, Colour: Black

| Article number | Article name | GTIN (EAN) | Packaging unit |
|----------------|--------------|---------------|----------------|
| <u>28621.4</u> | KDS-GM 63 BK | 4044211209049 | 5 ST |

28774.4 KDS-R 40-63 BK

Flat cable seals



Seal, Mounting type: Plug in, Length 42.7 mm, Width: 20.3 mm, IP 66, Colour: Grey

| Article number | Article name | GTIN (EAN) | Packaging unit |
|----------------|-----------------|---------------|----------------|
| <u>28717.6</u> | KDS-DE-FB1/E GR | 4044211221102 | 5 ST |



Seal, Mounting type: Plug in, Length 42.7 mm, Width: 20.3 mm, IP 66, Colour: Grey

| Article number | Article name | GTIN (EAN) | Packaging unit |
|----------------|-----------------|---------------|----------------|
| <u>28718.6</u> | KDS-DE-FB1/F GR | 4044211221119 | 5 ST |



Seal dummy, Mounting type: Plug in, Length 42.7 mm, Width: 20.3 mm, IP 66, Colour: Grey

| Article number | Article name | GTIN (EAN) | Packaging unit |
|----------------|-----------------|---------------|----------------|
| <u>28713.6</u> | KDS-DE-FB1/A GR | 4044211221065 | 5 ST |



Seal, Mounting type: Plug in, Length 42.7 mm, Width: 20.3 mm, IP 66, Colour: Grey

| Article number | Article name | GTIN (EAN) | Packaging unit |
|----------------|-----------------|---------------|----------------|
| <u>28714.6</u> | KDS-DE-FB1/B GR | 4044211221072 | 5 ST |



Seal, Mounting type: Plug in, Length 42.7 mm, Width: 20.3 mm, IP 66, Colour: Grey

| Article number | Article name | GTIN (EAN) | Packaging unit |
|----------------|-----------------|---------------|----------------|
| <u>28715.6</u> | KDS-DE-FB1/C GR | 4044211221089 | 5 ST |



Seal, Mounting type: Plug in, Length 42.7 mm, Width: 20.3 mm, IP 66, Colour: Grey

| Article number | Article name | GTIN (EAN) | Packaging unit |
|----------------|-----------------|---------------|----------------|
| <u>28716.6</u> | KDS-DE-FB1/D GR | 4044211221096 | 5 ST |

Locknuts

28774.4 KDS-R 40-63 BK



Hex. nut, Thread type: metric, Thread size: 40 mm, Material: Polyamide, Colour: Lightgrey

| Article number | Article name | GTIN (EAN) | Packaging unit |
|----------------|---------------|---------------|----------------|
| <u>4145.2</u> | S/M 40x1,5 GR | 4044211114268 | 50 |



Hex. nut, Thread type: metric, Thread size: 50 mm, Material: Polyamide, Colour: Light grey

| Article number | Article name | GTIN (EAN) | Packaging unit |
|----------------|---------------|---------------|----------------|
| <u>4146.2</u> | S/M 50x1,5 GR | 4044211114275 | 50 |



Hex. nut, Thread type: metric, Thread size: 63 mm, Material: Polyamide, Colour: Light grey

| Article number | Article name | GTIN (EAN) | Packaging unit |
|----------------|---------------|---------------|----------------|
| <u>4147.2</u> | S/M 63x1,5 GR | 4044211114282 | 50 |

Actuating tool



Using the KDS BW1 actuating tool, the seals can be conveniently mounted in and dismantled from the frame. The ergonomic grip and the special shape enable simple and precise installations, especially for cabling applications in confined spaces., Material: Polyamide

| Article number | Article name | GTIN (EAN) | Packaging unit |
|----------------|--------------|---------------|----------------|
| <u>28622.0</u> | KDS BW 1 | 4044211216597 | 1 ST |

Sheet-metal puncher



-

| Article number | Article name | GTIN (EAN) | Packaging unit |
|----------------|------------------|---------------|----------------|
| <u>28757.0</u> | BL-VA KDS-KV M40 | 4044211234478 | 1 ST |

Sheet-metal puncher

-

| Article number | Article name | GTIN (EAN) | Packaging unit |
|----------------|---------------|---------------|----------------|
| <u>28749.0</u> | BL KDS-KV M40 | 4044211222024 | 1 ST |

Sheet metal punch for round cutouts, Cutout diameter: 63.5 mm, Maximum wall thickness: 2.0 mm for S 235 sheet metal, Material: steel

| Article number | Article name | GTIN (EAN) | Packaging unit |
|----------------|---------------|---------------|----------------|
| <u>28751.0</u> | BL KDS-KV M63 | 4044211222048 | 1 ST |

Sheet metal punch for round cutouts, Cutout diameter: 50.5 mm, Maximum wall thickness: 2.0 mm for S 235 sheet metal, Material: steel

| Article number | Article name | GTIN (EAN) | Packaging unit |
|----------------|---------------|---------------|----------------|
| <u>28750.0</u> | BL KDS-KV M50 | 4044211222031 | 1 ST |

-

| Article number | Article name | GTIN (EAN) | Packaging unit |
|----------------|------------------|---------------|----------------|
| <u>28758.0</u> | BL-VA KDS-KV M50 | 4044211234485 | 1 ST |

-

| Article number | Article name | GTIN (EAN) | Packaging unit |
|----------------|------------------|---------------|----------------|
| <u>28759.0</u> | BL-VA KDS-KV M63 | 4044211234492 | 1 ST |

Sheet metal punch set for round cutouts, includes hydraulic hand pump, 7 X sheet metal punchers VA (M16, M20, M25, M32, M40, M50, M63), 2x pull axles, lock nut, plastic case, maximum wall thickness: 2.0 mm for stainless steel sheet, material: steel

| Article number | Article name | GTIN (EAN) | Packaging unit |
|----------------|-------------------|---------------|----------------|
| <u>28765.0</u> | BL-VA SET M16-M63 | 4044211222383 | 1 ST |

28774.4 KDS-R 40-63 BK

Sheet-metal puncher

Sheet metal punch set for round cutouts, includes hydraulic hand pump, 7 X sheet metal punches (M16, M20, M25, M32, M40, M50, M63), 2x tension axles, lock nut, plastic case, maximum wall thickness: 2.0 mm for S 235 sheet metal, material: steel

| Article number | Article name | GTIN (EAN) | Packaging unit |
|----------------|----------------|---------------|----------------|
| <u>28766.0</u> | BL SET M16-M63 | 4044211222390 | 1 ST |
