

28810.6 KES-E 12/24 A GR



Cable entry with membrane for unassembled cables, Mounting type: Snap-in, Length: 142 mm, Width: 44 mm, IP64, Colour: Grey

RAL: Ähnlich 7035

Business data

| | |
|--|------------------|
| Article number | <u>28810.6</u> |
| Article name | KES-E 12/24 A GR |
| GTIN (EAN) | 4044211234096 |
| Packaging unit | 10 |
| Quantity unit | PC |
| Weight per piece (not including packaging) | 39.4 g |
| Weight per piece (including packaging) | 40.28 g |
| Unit of weight | G |
| Customs number | 39259020 |
| Country of origin | DE |
| Product description | Cable Entry |
| Colour | Grey |

Technical data

Dimensions

| | |
|-----------------------|--------|
| Length | 142 mm |
| Length of wall cutout | 112 mm |
| Width | 44 mm |
| Width of wall cutout | 36 mm |
| Height | 12 mm |
| Installation height | 5 mm |

Materials

| | |
|---------------------------|--------|
| Material | TPE |
| Flammability class UL 94 | V-0 |
| Working temperature, min. | -40 °C |
| Working temperature, max. | 90 °C |
| Sealing material | TPE |
| Halogen-free | ✓ |
| Silicone-free | ✓ |

Further technical data

| | |
|--|---------|
| Mounting type | Snap-on |
| Degree of protection | IP54 |
| Sheet thickness min. | 1.5 mm |
| Sheet thickness max. | 2.5 mm |
| NEMA Type | 1, 12 |
| Number of wires | 12 |
| Number of cables for cable diameters 1.0 - 15.0 mm | 12 |

Environmental Product Compliance

| | |
|--------------------------------|------------|
| REACH Conform | yes |
| REACH Reference date | 2024-01-23 |
| REACH Candidate Substance Note | No |
| RoHS Conform | yes |

Approvals

cUL Recognized

| | |
|-----------------|-----------------|
| cUL approval | C22.2 No. 14-18 |
| cUL File Number | E489821 |
| cUL Recognized | 1 |

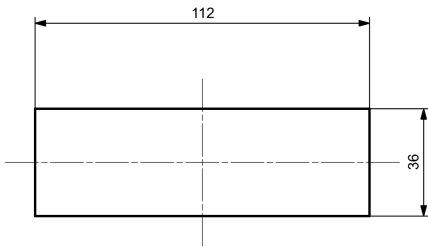
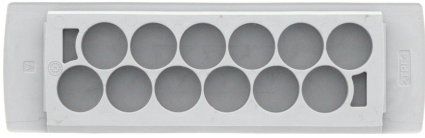
UL Recognized

| | |
|----------------|---------|
| UL approval | UL 508A |
| UL File Number | E489821 |
| UL Recognized | 1 |
| UL Type Rating | 1, 12 |

Data sheet

28810.6 KES-E 12/24 A GR

Media



Accessories
