



Round cable entry M20 with membrane for non-assembled cables, Mounting type: Snap-in, Length: 27 mm, Width: 27 mm, IP54, Colour: Grey

**RAL:** Ähnlich 7035

### Kaufmännische Daten

Artikelnummer	28822.6
Artikelbezeichnung	KES-E-R 20/9 A GR
GTIN (EAN)	4044211235161
Packaging unit	10
Quantity unit	PC
Weight per piece (not including packaging)	4.3 g
Weight per piece (including packaging)	5.3 g
Unit of weight	G
Customs number	39259020
Country of origin	DE
Product description	Cable Entry
Colour	Grey

### Technische Daten

#### Further technical data

Number of cables for cable diameters 1,0 - 3,6 mm	4
Number of cables for cable diameters 1,0 - 4,6 mm	5
Mounting type	Snap-on
Degree of protection	IP54
Sheet thickness min.	1.5 mm
Sheet thickness max.	2.5 mm
Number of wires	9

#### Dimensions

Length	26 mm
Length of wall cutout	20 mm
Width	26 mm
Width of wall cutout	20 mm
Height	12 mm
Installation height	5 mm

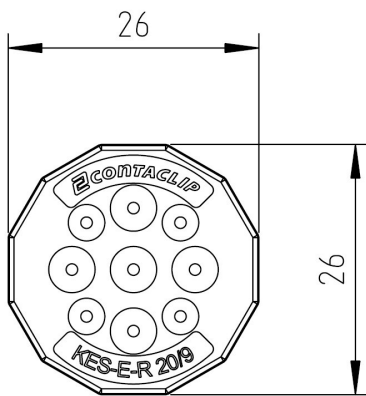
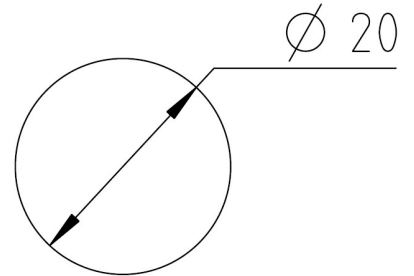
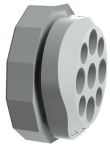
#### Materials

Material	TPE
Flammability class UL 94	V-0
Working temperature, min.	-40 °C
Working temperature, max.	90 °C
Sealing material	TPE
Halogen-free	✓
Silicone-free	✓

#### Environmental Product Compliance

REACH Conform	yes
REACH Reference date	2024-01-23
REACH Candidate Substance Note	No
RoHS Conform	yes

### Medien



---

### Zubehör

---