



Round cable entry M40 with membrane for non-assembled cables, Mounting type: Snap-in, Length: 50 mm, Width: 50 mm, IP54, Colour: Grey

RAL: Ähnlich 7035

Kaufmännische Daten

Artikelnummer	28827.6
Artikelbezeichnung	KES-E-R 40/16 A GR
GTIN (EAN)	4044211235215
Packaging unit	10
Quantity unit	PC
Weight per piece (not including packaging)	12.5 g
Weight per piece (including packaging)	13.5 g
Unit of weight	G
Customs number	39259020
Country of origin	DE
Product description	Cable Entry
Colour	Grey

Technische Daten

Dimensions

Length	50 mm
Length of wall cutout	40 mm
Width	50 mm
Width of wall cutout	40 mm
Height	12 mm
Installation height	5 mm

Materials

Material	TPE
Flammability class UL 94	V-0
Working temperature, min.	-40 °C
Working temperature, max.	90 °C
Sealing material	TPE
Halogen-free	✓
Silicone-free	✓

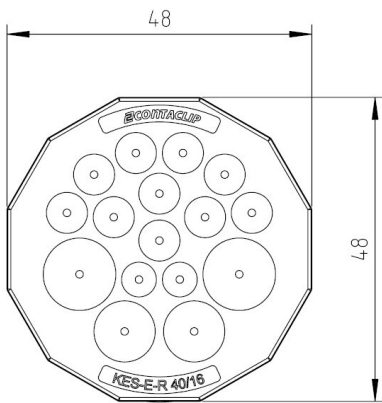
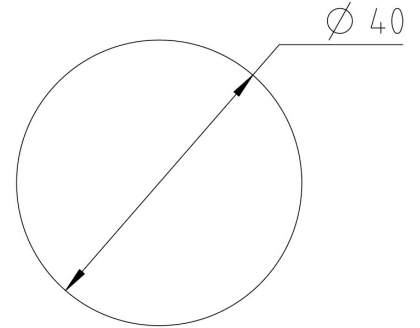
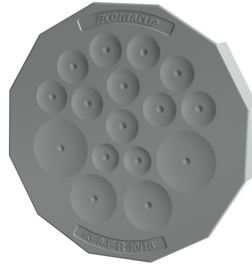
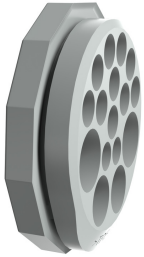
Further technical data

Mounting type	Snap-on
Degree of protection	IP54
Sheet thickness min.	1.5 mm
Sheet thickness max.	2.5 mm
Number of wires	16
Number of cables for cable diameters 1.0 - 5.3 mm	2
Number of cables for cable diameters 1.0 - 6.3 mm	10
Number of cables for cable diameters 1.0 - 9.5 mm	2
Number of cables for cable diameters 1.0 - 11.3 mm	2

Environmental Product Compliance

REACH Conform	yes
REACH Reference date	2024-01-23
REACH Candidate Substance Note	No
RoHS Conform	yes

Medien



Zubehör
