



Round cable entry M50 with membrane for unassembled cables, Mounting type: Snap-in, Length: 60 mm, Width: 60 mm, IP54, Colour: Grey

**RAL:** Ähnlich 7035

### Business data

Article number	28861.6
Article name	KES-E-R 50/12 B GR
GTIN (EAN)	4044211235093
Packaging unit	10
Quantity unit	PC
Weight per piece (not including packaging)	21 g
Weight per piece (including packaging)	21.1 g
Unit of weight	G
Customs number	39259020
Country of origin	DE
Product description	Cable Entry
Colour	Grey

### Technical data

#### Dimensions

Length	57.96 mm
Length of wall cutout	50 mm
Width	57.96 mm
Width of wall cutout	50 mm
Height	12 mm
Installation height	5 mm

#### Materials

Material	TPE
Flammability class UL 94	V-0
Working temperature, min.	-40 °C
Working temperature, max.	90 °C
Sealing material	TPE
Halogen-free	✓
Silicone-free	✓

#### Further technical data

Mounting type	Snap-on
Degree of protection	IP54
Sheet thickness min.	2.5 mm
Sheet thickness max.	4 mm
NEMA Type	1, 12, 4x (indoor use only)
Number of wires	12
Number of cables for cable diameters 1.0 - 9.2 mm	10
Number of cables for cable diameters 1.0 - 11.2 mm	2

#### Environmental Product Compliance

REACH Conform	yes
REACH Reference date	2024-01-23
REACH Candidate Substance Note	No
RoHS Conform	yes

---

### Approvals

---

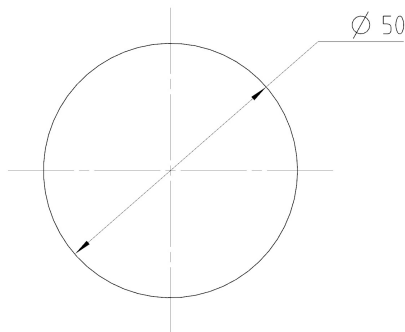
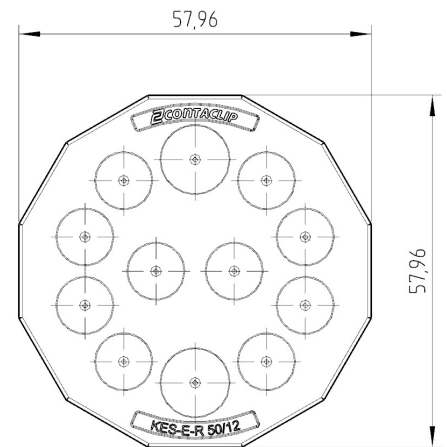
#### cUL Recognized

cUL approval	C22.2 No. 14-18
cUL File Number	E489821
cUL Recognized	1

#### UL Recognized

UL approval	UL 508A
UL File Number	E489821
UL Recognized	1
UL Type Rating	1, 12, 4x (indoor use only)

### Media



## 28861.6 KES-E-R 50/12 B GR

---

### Accessories

---

#### Sheet-metal puncher

---

Sheet metal punch for round cutouts, Cutout diameter: 50.5 mm, Maximum wall thickness: 2.0 mm for S 235 sheet metal, Material: steel

Article number	Article name	GTIN (EAN)	Packaging unit
<u>28750.0</u>	BL KDS-KV M50	4044211222031	1 ST

-

Article number	Article name	GTIN (EAN)	Packaging unit
<u>28758.0</u>	BL-VA KDS-KV M50	4044211234485	1 ST