



Cable entry with membrane for non-assembled cables, mounting type: catches and screws, length: 147 mm, width: 58 mm, IP 66, color: blue, FDA-compliant material

RAL: Ähnlich 5005

Business data

Article number	<u>28905.5</u>
Article name	KES-GB-FDA 20/24 BU
GTIN (EAN)	4044211242978
Packaging unit	10
Quantity unit	PC
Weight per piece (not including packaging)	114.44 g
Weight per piece (including packaging)	121.44 g
Unit of weight	G
Customs number	39259020
Country of origin	DE
Product description	Cable Entry
Colour	Blue

Technical data

Dimensions

Length	149.6 mm
Length of wall cutout	112 mm
Width	58 mm
Width of wall cutout	36 mm
Installation height	14.5 mm

Materials

Material	Polyamide 6.6
Glass-fibre reinforced	✓
Flammability class UL 94	HB
Working temperature, min.	-40 °C
Working temperature, max.	80 °C
Sealing material	TPE
Halogen-free	✓
Silicone-free	✓
Material approval	FDA-compliant elastomer according to food approval 1935/2004/EG and (EU) 10/2011

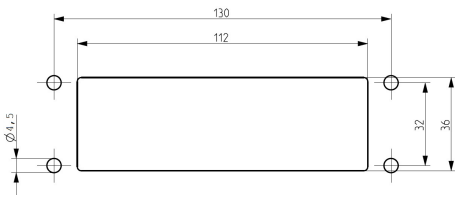
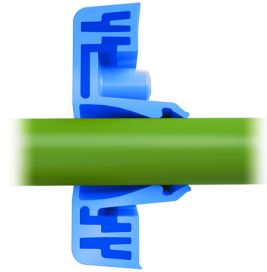
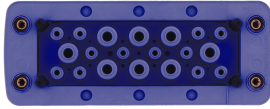
Further technical data

Mounting type	Snap-on and screw-on
Degree of protection	IP66
Sheet thickness min.	1.5 mm
Sheet thickness max.	2 mm
Number of screw holes	4
Fixing screws	M4 (ISO 4762 / DIN 912)
Torque of the fixing screws	3 Nm
Number of wires	20
Number of cables for cable diameters 3.2 - 6.3 mm	12
Number of cables for cable diameters 5.5 - 10.5 mm	8

Environmental Product Compliance

REACH Conform	yes
REACH Reference date	2024-01-23
REACH Candidate Substance Note	No
RoHS Conform	yes

Media



Accessories

EMC brackets



Shield-connection rail enabling mounting of shield connection clips directly on cable entry system KDS and KES, Mounting type: Screw, Length: 35,3 mm, Width: 140 mm, Height: 16 mm, Profile: 10x3 mm

Article number	Article name	GTIN (EAN)	Packaging unit
<u>28626.0</u>	KDS-EMV-SAB 10/24	4044211219659	1 ST

Sheet-metal puncher



Sheet metal puncher for rectangular openings, Dimensions opening: 112 x 36 mm, Maximum wall thickness: 2.0 mm for stainless steel sheet, Material: steel

Article number	Article name	GTIN (EAN)	Packaging unit
<u>28752.0</u>	BL-VA KES	4044211221935	1 ST



Sheet metal puncher for rectangular openings, Dimensions opening: 112 x 36 mm, Maximum wall thickness: 2.0 mm for S 235 sheet, Material: steel

Article number	Article name	GTIN (EAN)	Packaging unit
<u>28744.0</u>	BL KES	4044211221942	1 ST