



Round cable entry M25 with membrane for non-assembled cables, Mounting type: Snap-in and Screw, Length: 38 mm, Width: 38 mm, IP66, Colour: Grey

RAL: Ähnlich 7035

Business data

| | |
|--|----------------|
| Article number | 28910.6 |
| Article name | KES-R M25/3 GR |
| GTIN (EAN) | 4044211247171 |
| Packaging unit | 10 |
| Quantity unit | PC |
| Weight per piece (not including packaging) | 13.21 g |
| Weight per piece (including packaging) | 13.61 g |
| Unit of weight | G |
| Customs number | 39259020 |
| Country of origin | DE |
| Product description | Cable Entry |
| Colour | Grey |

Technical data

Further technical data

| | |
|---|----------------------|
| Degree of protection for screw mounting | IP66 |
| Number of cables for cable diameters 3,2 - 5,2 mm | 2 |
| Number of cables for cable diameters 3,2 - 6,5 mm | 1 |
| Wall thickness with lock nut mounting, max. | 11 mm |
| Wall thickness with snap-in mounting, max. | 2,5 mm |
| Mounting type | Snap-on and screw-on |
| Degree of protection | IP66 |
| Min wall thickness | 1 mm |
| Torque for the locknut | 3 Nm |
| Number of wires | 3 |
| Degree of protection for snap-in mounting | IP54 |

Dimensions

| | |
|---------------------|-------|
| Length | 38 mm |
| Width | 38 mm |
| Installation height | 8 mm |

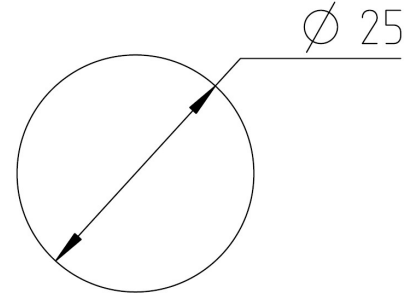
Materials

| | |
|---------------------------|---------------|
| Material | Polyamide 6.6 |
| Flammability class UL 94 | V-0 |
| Working temperature, min. | -40 °C |
| Working temperature, max. | 80 °C |
| Sealing material | TPE |
| Halogen-free | ✓ |
| Silicone-free | ✓ |

Environmental Product Compliance

| | |
|--------------------------------|------------|
| REACH Conform | yes |
| REACH Reference date | 2024-01-23 |
| REACH Candidate Substance Note | No |
| RoHS Conform | yes |

Media



Accessories

Locknuts



Hex. nut, Thread type: metric, Thread size: 25 mm, Material: Polyamide, Colour: Light grey

| Article number | Article name | GTIN (EAN) | Packaging unit |
|----------------|---------------|---------------|----------------|
| <u>4143.2</u> | S/M 25x1,5 GR | 4044211114244 | 100 |
