



Round cable entry M25 with membrane for non-assembled cables, Mounting type: Snap-in and Screw, Length: 38 mm, Width: 38 mm, IP66, Colour: Grey

RAL: Ähnlich 7035

Business data

Article number	28911.6
Article name	KES-R M25/4 GR
GTIN (EAN)	4044211247188
Packaging unit	10
Quantity unit	PC
Weight per piece (not including packaging)	13.21 g
Weight per piece (including packaging)	13.61 g
Unit of weight	G
Customs number	39259020
Country of origin	DE
Product description	Cable Entry
Colour	Grey

Technical data

Further technical data

Degree of protection for screw mounting	IP66
Number of cables for cable diameters 3,2 - 5,2 mm	4
Wall thickness with lock nut mounting, max.	11 mm
Wall thickness with snap-in mounting, max.	2,5 mm
Mounting type	Snap-on and screw-on
Degree of protection	IP66
Min wall thickness	1 mm
Torque for the locknut	3 Nm
Number of wires	4
Degree of protection for snap-in mounting	IP54

Dimensions

Length	38 mm
Width	38 mm
Installation height	8 mm

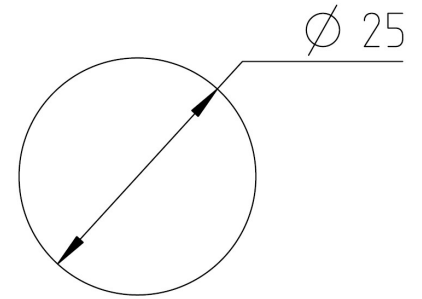
Materials

Material	Polyamide 6.6
Flammability class UL 94	V-0
Working temperature, min.	-40 °C
Working temperature, max.	80 °C
Sealing material	TPE
Halogen-free	✓
Silicone-free	✓

Environmental Product Compliance

REACH Conform	yes
REACH Reference date	2024-01-23
REACH Candidate Substance Note	No
RoHS Conform	yes

Media



Accessories

Locknuts



Hex. nut, Thread type: metric, Thread size: 25 mm, Material: Polyamide, Colour: Light grey

Article number	Article name	GTIN (EAN)	Packaging unit
<u>4143.2</u>	S/M 25x1,5 GR	4044211114244	100
