



Round cable entry M50 with membrane for non-assembled cables, Mounting type: Snap-in and Screw, Length: 61 mm, Width: 61 mm, IP66, Colour: Blue, FDA compliant material

**RAL:** Ähnlich 5005

### Business data

Article number	<u>28940.5</u>
Article name	KES-R-FDA M50/68 BU
GTIN (EAN)	
Packaging unit	10
Quantity unit	PC
Unit of weight	G
Customs number	39259020
Country of origin	DE
Product description	Cable Entry
Colour	Blue

### Technical data

#### Further technical data

Degree of protection for screw mounting	IP66
Number of cables for cable diameters 1,5 - 2,6 mm	68
Wall thickness with lock nut mounting, max.	11 mm
Wall thickness with snap-in mounting, max.	2,5 mm
Mounting type	Snap-on and screw-on
Degree of protection	IP66
Min wall thickness	1 mm
Torque for the locknut	7 Nm
Number of wires	68
Degree of protection for snap-in mounting	IP54

#### Dimensions

Length	61 mm
Width	61 mm
Installation height	8 mm

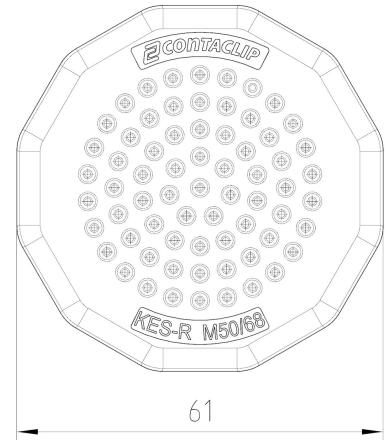
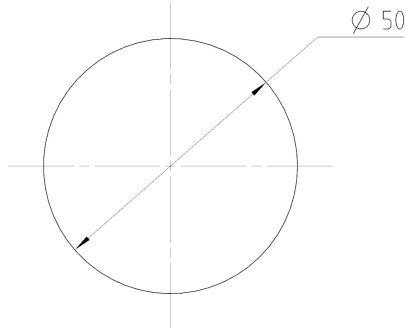
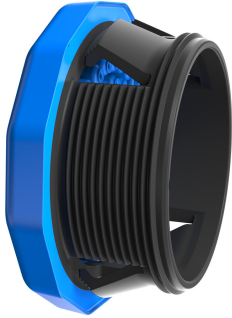
#### Materials

Material	Polyamide 6.6
Flammability class UL 94	HB
Working temperature, min.	-40 °C
Working temperature, max.	80 °C
Sealing material	TPE
Halogen-free	✓
Silicone-free	✓
Material approval	FDA-compliant elastomer according to food approval 1935/2004/EG and (EU) 10/2011

#### Environmental Product Compliance

REACH Conform	yes
REACH Reference date	2024-01-23
REACH Candidate Substance Note	No
RoHS Conform	yes

### Media



---

### Accessories

---