



Cover, Length: 37.3 mm, Width: 16 mm, Colour: White

RAL: 9010

Business data

Article number	<u>2968.0</u>
Article name	AD 1/16/N WH
GTIN (EAN)	4044211056971
Packaging unit	20
Quantity unit	PC
Weight per piece (not including packaging)	1.02 g
Weight per piece (including packaging)	1.05 g
Unit of weight	G
Customs number	85389099
Country of origin	DE
Product description	Cover
Colour	White

Technical data

Dimensions

Length	37.3 mm
--------	---------

Width	16 mm
-------	-------

Materials

Material	Polyamide 6.6
----------	---------------

Flammability class UL 94	V-2
--------------------------	-----

Working temperature, min.	-40 °C
---------------------------	--------

Working temperature, max.	105 °C
---------------------------	--------

Environmental Product Compliance

REACH Conform	yes
---------------	-----

REACH Reference date	2024-01-23
----------------------	------------

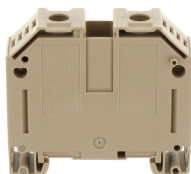
REACH Candidate Substance Note	No
--------------------------------	----

RoHS Conform	yes
--------------	-----

Media

Accessories

##INVERSE##CONTA-CONNECT



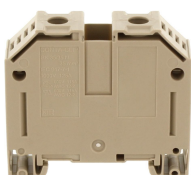
Feed-through terminal, Screw connection, Mounting type: Mounting rail TS 35/7.5, Rated cross-section: 35 mm², Width: 16 mm, Colour: Beige

Article number	Article name	GTIN (EAN)	Packaging unit
<u>17372.2</u>	RK 35/35 N/Z BG	4044211186340	20



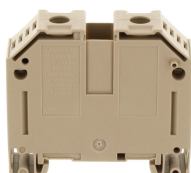
Feed-through terminal, Screw connection, Mounting type: Mounting rail TS 35/7.5, Rated cross-section: 35 mm², Width: 16 mm, Colour: Black-yellow

Article number	Article name	GTIN (EAN)	Packaging unit
<u>17374.2</u>	RK 35/35 N/PE BKYE	4044211186548	20 ST



Feed-through terminal, Screw connection, Mounting type: Mounting rail TS 35/7.5, Rated cross-section: 35 mm², Width: 16 mm, Colour: Beige

Article number	Article name	GTIN (EAN)	Packaging unit
<u>17371.2</u>	RK 35/35 N/IS BG	4044211186241	20



Feed-through terminal, Screw connection, Mounting type: Mounting rail TS 35/7.5, Rated cross-section: 35 mm², Width: 16 mm, Colour: Beige

Article number	Article name	GTIN (EAN)	Packaging unit
<u>17373.2</u>	RK 35/35 N/Z/IS BG	4044211186449	20



Feed-through terminal, Screw connection, Mounting type: Mounting rail TS 35/7.5, Rated cross-section: 35 mm², Width: 16 mm, Colour: Black

Article number	Article name	GTIN (EAN)	Packaging unit
<u>17376.4</u>	RK 35/35 N PA-G BK	4044211186562	20 ST



Feed-through terminal, Screw connection, Mounting type: Mounting rail TS 35/7.5, Rated cross-section: 35 mm², Width: 16 mm, Colour: Black

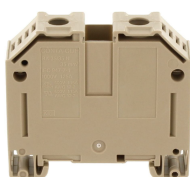
Article number	Article name	GTIN (EAN)	Packaging unit
<u>17377.4</u>	RK 35/35 N/IS PA-G BK	4044211186579	20 ST

##INVERSE##CONTA-CONNECT



Feed-through terminal, Screw connection, Mounting type: Mounting rail TS 35/7.5, Rated cross-section: 35 mm², Width: 16 mm, Colour: Black-yellow

Article number	Article name	GTIN (EAN)	Packaging unit
<u>17375.2</u>	RK 35/35 N/PE/IS BKYE	4044211186555	20 ST



Feed-through terminal, Screw connection, Mounting type: Mounting rail TS 35/7.5, Rated cross-section: 35 mm², Width: 16 mm, Colour: Beige

Article number	Article name	GTIN (EAN)	Packaging unit
<u>17370.2</u>	RK 35/35 N BG	4044211185473	20