



ABS housing without metric knock-outs, Colour: Light grey, RAL: 7035, Cover: ABS, Light grey

RAL: 9018

Business data

Article number	<u>31016.3</u>
Article name	CG 1612/90 OV
GTIN (EAN)	4044211188719
Packaging unit	16
Quantity unit	PC
Weight per piece (not including packaging)	340 g
Weight per piece (including packaging)	340 g
Unit of weight	G
Customs number	39269097
Country of origin	DE
Product description	ABS housing
Colour	Light grey

Technical data

Dimensions

Length	162 mm
Width	122 mm
Height	90 mm

Materials

Material	ABS
Lid material	ABS
Lid colour	Light grey
Lid screws	Stainless steel V2A
Flammability class UL 94	HB
Flammability acc. EN 60695	650 ° C
Working temperature, min.	-25 °C
Working temperature, max.	40 °C
Sealing material	Polyurethane
Ambient temperature 24 hours	35 °C
Rel. humidity at 40 °C, max.	50 %
Short-term rel. humidity at 25 °C, max.	95 %
Halogen-free	✓
PVC-free	✓
No heavy metals	✓
Silicone-free	✓

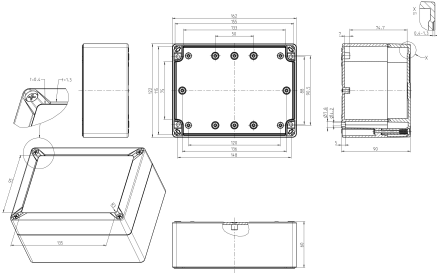
Further technical data

Degree of protection	IP67
Protection class	II
Impact resistance	IK07
Rated insulation voltage AC	690 V
Rated insulation voltage DC	1000 V
Quick release	✓
Lid retainer	✓

Environmental Product Compliance

REACH Conform	yes
REACH Reference date	2024-01-23
REACH Candidate Substance Note	No
RoHS Conform	yes

Media



Accessories

Outer joints



Inner joints, Material: Polycarbonate, Colour: Grey

Article number	Article name	GTIN (EAN)	Packaging unit
<u>31080.2</u>	IG/CG	4044211203504	5 ST

Mounting plate



Mounting plate, Material: Hard laminated paper, Surface: Melamine laminated, Colour: Grey, RAL: 7035

Article number	Article name	GTIN (EAN)	Packaging unit
<u>31074.2</u>	MP/CG 1612	4044211203566	1 ST

DIN rail section TS 35/7.5



DIN rail, slotted, Width: 35 mm, Height: 7.5 mm, Material: Steel, Colour: natural

Article number	Article name	GTIN (EAN)	Packaging unit
<u>31084.0</u>	TS 35/144/CG mm lang	4044211216146	1 ST

Wall brackets



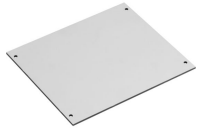
Wall brackets, Material: Polycarbonate, Colour: Grey

Article number	Article name	GTIN (EAN)	Packaging unit
<u>31079.2</u>	WL/CG	4044211203511	1 ST

##INVERSE##CONTA-BOX

Data sheet

31016.3 CG 1612/90 OV



Mounting plate, Material: Hard laminated paper, Surface: Melamine laminated, Colour: Grey, RAL: 7035

Article number	Article name	GTIN (EAN)	Packaging unit
<u>31074.2</u>	MP/CG 1612	4044211203566	1 ST