



ABS housing without metric knock-outs, Colour: Light grey, RAL: 7035, Cover: Polycarbonate, Transparent

**RAL:** 9018

### Business data

Article number	<u>31019.3</u>
Article name	CG 2012/75 OVT
GTIN (EAN)	4044211188887
Packaging unit	10
Quantity unit	PC
Weight per piece (not including packaging)	378.5 g
Weight per piece (including packaging)	378.5 g
Unit of weight	G
Customs number	39269097
Country of origin	DE
Product description	ABS housing
Colour	Light grey

### Technical data

#### Dimensions

Length	202 mm
Width	122 mm
Height	75 mm

#### Materials

Material	ABS
Lid material	Polycarbonate
Lid colour	Transparent
Lid screws	Stainless steel V2A
Flammability class UL 94	HB
Flammability acc. EN 60695	650 ° C
Working temperature, min.	-25 °C
Working temperature, max.	40 °C
Sealing material	Polyurethane
Ambient temperature 24 hours	35 °C
Rel. humidity at 40 °C, max.	50 %
Short-term rel. humidity at 25 °C, max.	95 %
Halogen-free	✓
PVC-free	✓
No heavy metals	✓
Silicone-free	✓

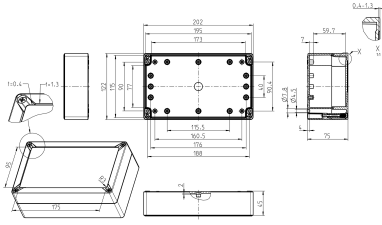
#### Further technical data

Degree of protection	IP67
Protection class	II
Impact resistance	IK07
Rated insulation voltage AC	690 V
Rated insulation voltage DC	1000 V
Quick release	✓
Lid retainer	✓

#### Environmental Product Compliance

REACH Conform	yes
REACH Reference date	2024-01-23
REACH Candidate Substance Note	No
RoHS Conform	yes

### Media



### Accessories

#### Outer joints



Inner joints, Material: Polycarbonate, Colour: Grey

Article number	Article name	GTIN (EAN)	Packaging unit
<u>31080.2</u>	IG/CG	4044211203504	5 ST

#### Mounting plate



Mounting plate, Material: Hard laminated paper, Surface: Melamine laminated, Colour: Grey, RAL: 7035

Article number	Article name	GTIN (EAN)	Packaging unit
<u>31075.2</u>	MP/CG 2012	4044211203573	1 ST

#### DIN rail section TS 35/7.5



DIN rail, slotted, Width: 35 mm, Height: 7.5 mm, Material: Steel, Colour: natural

Article number	Article name	GTIN (EAN)	Packaging unit
<u>31085.0</u>	TS 35/184/CG mm lang	4044211216153	1 ST

#### Wall brackets

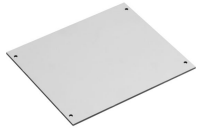


Wall brackets, Material: Polycarbonate, Colour: Grey

Article number	Article name	GTIN (EAN)	Packaging unit
<u>31079.2</u>	WL/CG	4044211203511	1 ST

##INVERSE##CONTA-BOX

## 31019.3 CG 2012/75 OVT



Mounting plate, Material: Hard laminated paper, Surface: Melamine laminated, Colour: Grey, RAL: 7035

Article number	Article name	GTIN (EAN)	Packaging unit
<u>31075.2</u>	MP/CG 2012	4044211203573	1 ST