



Wire-end ferrules, Max. wire cross-section: 4 mm², Length: 20 mm, Length of copper pipe: 12 mm, Colour: Grey

RAL: Ähnlich 7035

Business data

Article number	<u>3194.0</u>
Article name	H 4,0/20-D SR GR
GTIN (EAN)	4044211134280
Packaging unit	500
Quantity unit	PC
Weight per piece (not including packaging)	0.28 g
Weight per piece (including packaging)	0.29 g
Unit of weight	G
Customs number	85369010
Country of origin	DE
Product description	Ferrules
Colour	Grey

Technical data

Dimensions

Length	20 mm
Length of copper pipe	12 mm
Diameter of copper pipe	2.8 mm
Diameter plastic collar	4.7 mm
Wall thickness of copper pipe	0.2 mm
Wall thickness of plastic collar	0.3 mm

Connection data

Wire cross-section, max.	4 mm ²
Wire cross-section AWG, max.	12
Stripping length	12 mm

Materials

Copper pipe	Copper alloy
Surface	Galvanically tin-plated, shiny
Plastic collar	Polypropylene homopolymer
Working temperature, min.	-5 °C
Working temperature, max.	105 °C

Further technical data

Insulation available	✓
----------------------	---

Environmental Product Compliance

REACH Conform	yes
REACH Reference date	2024-01-23
REACH Candidate Substance Note	No
RoHS Conform	yes

Data sheet



3194.0 H 4,0/20-D SR GR

Approvals

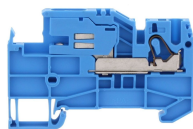
Standards and regulations

DIN 46228-4:1990	yes
------------------	-----

Media

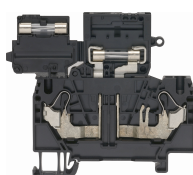
Accessories

##INVERSE##CONTA-CONNECT



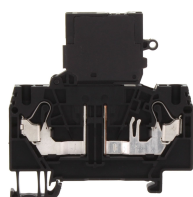
Neutral-disconnect terminal, Push-in connection, Mounting type: Mounting rail TS 35/7.5,
Rated cross-section: 4 mm², Width: 5.1 mm, Colour: Blue

Article number	Article name	GTIN (EAN)	Packaging unit
<u>3273.5</u>	FNT 2,5-4 BU	4044211138974	100 ST



Fuse-disconnect terminal, Push-in connection, Mounting type: Mounting rail TS 35/7.5,
Rated cross-section: 4 mm², Width: 6 mm, Colour: Black

Article number	Article name	GTIN (EAN)	Packaging unit
<u>3290.4</u>	FSIK 4/2A BK	4044211180287	25 ST



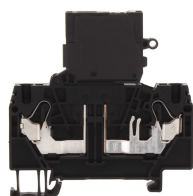
Fuse-disconnect terminal, Push-in connection, Mounting type: Mounting rail TS 35/7.5,
Rated cross-section: 4 mm², Width: 6 mm, Colour: Black

Article number	Article name	GTIN (EAN)	Packaging unit
<u>3291.4</u>	FSIK 4/2A/LED 12-30V AC/DC BK	4044211188962	25 ST



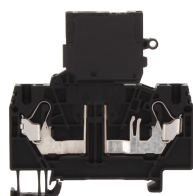
Disconnect-blade terminal, Push-in connection, Mounting type: Mounting rail TS 35/7.5,
Rated cross-section: 4 mm², Width: 6.1 mm, Colour: Black

Article number	Article name	GTIN (EAN)	Packaging unit
<u>3239.4</u>	FSIK 4/2A/MT BK	4044211209933	50 ST



Fuse-disconnect terminal, Push-in connection, Mounting type: Mounting rail TS 35/7.5,
Rated cross-section: 4 mm², Width: 6 mm, Colour: Black

Article number	Article name	GTIN (EAN)	Packaging unit
<u>3292.4</u>	FSIK 4/2A/LED 30-60V AC/DC BK	4044211188979	25 ST



Fuse-disconnect terminal, Push-in connection, Mounting type: Mounting rail TS 35/7.5,
Rated cross-section: 4 mm², Width: 6 mm, Colour: Black

Article number	Article name	GTIN (EAN)	Packaging unit
<u>3293.4</u>	FSIK 4/2A/LED 110-250V AC/DC BK	4044211188986	25 ST

3194.0 H 4,0/20-D SR GR

##INVERSE##CONTA-CONNECT



PE installation terminal, Push-in connection, Mounting type: Mounting rail TS 35/7.5, Rated cross-section: 4 mm², Width: 5.1 mm, Colour: Green-yellow

Article number	Article name	GTIN (EAN)	Packaging unit
<u>3279.2</u>	FSLI 2,5-4 GNYE	4044211139094	100 ST



Feed-through installation terminal, Push-in connection, Mounting type: Mounting rail TS 35/7.5, Rated cross-section: 4 mm², Width: 5.1 mm, Colour: Beige

Article number	Article name	GTIN (EAN)	Packaging unit
<u>3276.2</u>	FRKI 2,5-4 BG	4044211139001	100