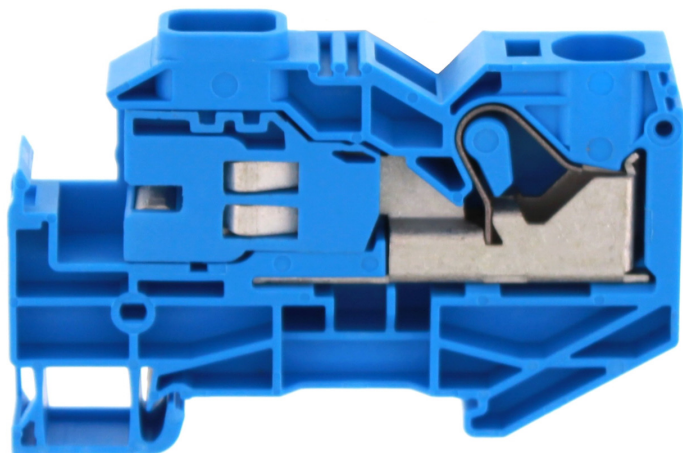


Data sheet

3275.5 FNT 16 BU



Neutral-disconnect terminal, Push-in connection, Mounting type: Mounting rail TS 35/7.5, Rated cross-section: 16 mm², Width: 12.1 mm, Colour: Blue

RAL: Ähnlich 5005

Business data

Article number	<u>3275.5</u>
Article name	FNT 16 BU
GTIN (EAN)	4044211138998
Packaging unit	50
Quantity unit	PC
Weight per piece (not including packaging)	36.62 g
Weight per piece (including packaging)	37 g
Unit of weight	G
Customs number	85369010
Country of origin	CZ
Product description	Neutral disconnect terminal
Colour	Blue

Technical data

Dimensions

Length	76.2 mm
Width	12.1 mm
Height	48 mm
Height TS 35/7.5	49 mm

Ratings

Rated voltage	400 V
Rated current	76 A
Rated cross-section	16 mm ²
Rated impulse voltage	8 kV
Overvoltage category	III
Contamination degree	3
Maximum power dissipation for nominal condition	2.43 W

Connection data

Connection principle	Push-in connection
Connection position	Top
Connections	1
Number of terminals per level	1
Number of levels	1
Wire cross-section single-core (rigid) / stranded, min.	2.5 mm ²
Wire cross-section single core (rigid)/stranded, max.	25 mm ²
Wire cross-section stranded, min.	2.5 mm ²
Wire cross-section stranded, max.	16 mm ²
Wire cross-section stranded with wire-end ferrules, min.	2.5 mm ²
Wire cross-section stranded with wire-end ferrules, max.	16 mm ²
Wire cross-section AWG, min.	14
Wire cross-section AWG, max.	4
Stripping length	18 mm

Materials

Insulation housing	Polyamide 6.6
Flammability class UL 94	V-0
Working temperature, min.	-40 °C
Working temperature, max.	120 °C

Data sheet

3275.5 FNT 16 BU

Technical data

Further technical data

Mounting type	Mounting rail TS 35/7,5
Gauge plug acc. to EN 60 947-1	A7
Number of cross-connection channels	1
End plate required	✓
Version of lengthwise partition	Sliding

Environmental Product Compliance

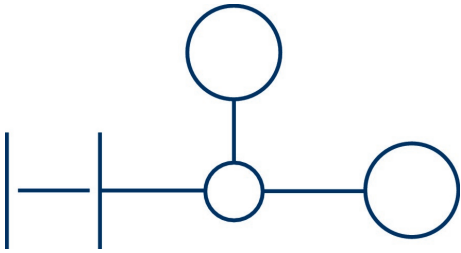
REACH Conform	yes
REACH Reference date	2024-01-23
REACH Candidate Substance Note	No
RoHS Conform	yes

Approvals

KEMA KEUR approval

KEMA KEUR approval	EN 60947-7-1:2009
KEMA KEUR approval applied for	yes
KEMA rated voltage	400 V
KEMA rated current	90 A
KEMA rated impulse voltage	8 kV
KEMA wire cross-section single core (rigid), min.	2.5 mm ²
KEMA wire cross-section single-core (rigid), max.	25 mm ²
KEMA wire cross-section stranded, min.	2.5 mm ²
KEMA wire cross-section stranded, max.	25 mm ²
KEMA wire cross-section stranded with wire-end ferrules, min.	2.5 mm ²
KEMA wire cross-section stranded with wire-end ferrules, max.	16 mm ²

Media



Accessories

End stop



End stop, Mounting type: Mounting rail TS 35/7.5 and TS 35/15, Width: 5 mm, Colour: Beige

Article number	Article name	GTIN (EAN)	Packaging unit
<u>3811.2</u>	ZES 35/2 BG	4044211080600	50

Fixing plate



Plate for busbar, Width: 1.5 mm, Colour: Blue

Article number	Article name	GTIN (EAN)	Packaging unit
<u>3483.5</u>	HP FDLIS 10x3 BU	4044211172015	20 ST

Insulated cross-connector



Insulated cross-connector, No. of poles: 2, Mounting type: Plug in, Width: 20 mm, Rated cross-section: 16 mm², Colour: Yellow

Article number	Article name	GTIN (EAN)	Packaging unit
<u>17247.8</u>	SQI 16/2 YE	4044211181116	20 ST

Quick marking



Terminal marker / Pocket Maxicard, Length: 5 mm, Width: 8 mm, Colour: White

Article number	Article name	GTIN (EAN)	Packaging unit
<u>9323.7</u>	PMC SB 8/40 WH	4044211129231	400 ST