

End plate, Colour: Beige

Business data

Article number	3486.2
Article name	FAPI 16/2A BG
GTIN (EAN)	4044211176792
Packaging unit	20
Quantity unit	PC
Weight per piece (not including packaging)	3.4 g
Weight per piece (including packaging)	3.4 g
Unit of weight	G
Customs number	85389099
Country of origin	DE
Prio-Article	3486.2
Product description	End plate

Technical data

Dimensions

Length	84.2 mm
Width	1.5 mm
Height	45.2 mm

Materials

Material	Polyamide 6.6
Flammability class UL 94	V-0
Working temperature, min.	-40 °C
Working temperature, max.	120 °C

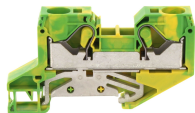
Environmental Product Compliance

REACH Conform	yes
REACH Reference date	2023-06-14, 2024-01-23
REACH Candidate Substance Note	No
RoHS Conform	yes

Media

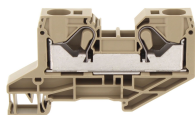
Accessories

Terminal blocks



PE installation terminal, Push-in connection, Mounting type: Mounting rail TS 35/7.5,
Colour: Green-yellow

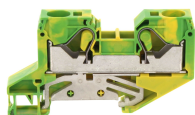
Article number	Article name	GTIN (EAN)	Packaging unit
<u>3281.2</u>	FSLI 16/2A GNYE	4044211139186	50 ST



Feed-through installation terminal, Push-in connection, Mounting type: Mounting rail TS 35/7.5,
Colour: Beige

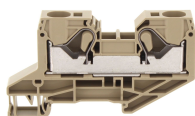
Article number	Article name	GTIN (EAN)	Packaging unit
<u>3278.2</u>	FRKI 16/2A BG	4044211139063	50

##INVERSE##CONTA-CONNECT



PE installation terminal, Push-in connection, Mounting type: Mounting rail TS 35/7.5,
Colour: Green-yellow

Article number	Article name	GTIN (EAN)	Packaging unit
<u>3281.2</u>	FSLI 16/2A GNYE	4044211139186	50 ST



Feed-through installation terminal, Push-in connection, Mounting type: Mounting rail TS 35/7.5,
Colour: Beige

Article number	Article name	GTIN (EAN)	Packaging unit
<u>3278.2</u>	FRKI 16/2A BG	4044211139063	50