

ABS housing, Colour: Light grey, RAL: 7035, Cover: ABS, Light grey

RAL: 9018

Business data

| | |
|--|---------------|
| Article number | 4089.3 |
| Article name | CT 200/12 |
| GTIN (EAN) | 4044211062026 |
| Packaging unit | 1 |
| Quantity unit | PC |
| Weight per piece (not including packaging) | 359 g |
| Weight per piece (including packaging) | 415 g |
| Unit of weight | G |
| Customs number | 39269097 |
| Country of origin | RO |
| Product description | ABS housing |
| Colour | Light grey |

Technical data

Dimensions

| | |
|--------|--------|
| Length | 200 mm |
| Width | 120 mm |
| Height | 75 mm |

Materials

| | |
|---------------------------|-----------------|
| Material | ABS |
| Lid material | ABS |
| Lid colour | Light grey |
| Lid screws | Stainless steel |
| Flammability class UL 94 | HB |
| Working temperature, min. | -40 °C |
| Working temperature, max. | 60 °C |
| Sealing material | Chloroprene |
| Cadmium-free | ✓ |
| Halogen-free | ✓ |

Further technical data

| | |
|---|------------------------|
| Degree of protection | IP66 |
| Protection class | II |
| Impact resistance | IK08 |
| Self-tapping mounting screws for indoor installations | ✓ |
| Dielectric strength | 24 kV/mm |
| Surface resistance | 4x10 ¹⁴ Ohm |

Environmental Product Compliance

| | |
|--------------------------------|------------|
| REACH Conform | yes |
| REACH Reference date | 2024-01-23 |
| REACH Candidate Substance Note | No |
| RoHS Conform | yes |

Data sheet

4089.3 CT 200/12



Media

Accessories

Outer joints

Outer joints, Colour: Light grey

| Article number | Article name | GTIN (EAN) | Packaging unit |
|----------------|-----------------|---------------|----------------|
| <u>4510.3</u> | AG/CT/CM (Paar) | 4044211064044 | 1 ST |

Mounting plate

Mounting plate, Material: Hard laminated paper, Colour: Brown

| Article number | Article name | GTIN (EAN) | Packaging unit |
|----------------|---------------|---------------|----------------|
| <u>4505.6</u> | MP/M-T/200/12 | 4044211063832 | 1 ST |

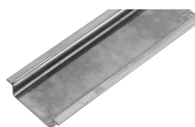
DIN rail section TS 15/5.5



DIN rail, slotted, Width: 15 mm, Height: 5.5 mm, Material: Steel, Colour: natural

| Article number | Article name | GTIN (EAN) | Packaging unit |
|----------------|-------------------|---------------|----------------|
| <u>4508.9</u> | TS 15/188 mm lang | 4044211152734 | 1 ST |

DIN rail section TS 35/7.5



DIN rail, slotted, Width: 35 mm, Height: 7.5 mm, Material: Steel, Colour: natural

| Article number | Article name | GTIN (EAN) | Packaging unit |
|----------------|-------------------|---------------|----------------|
| <u>4509.0</u> | TS 35/188 mm lang | 4044211152741 | 1 ST |

Wall brackets

Data sheet

4089.3 CT 200/12

Wall brackets, Material: Polycarbonate, Colour: Grey

| Article number | Article name | GTIN (EAN) | Packaging unit |
|----------------|--------------|---------------|----------------|
| <u>4510.2</u> | WL/CM/CT | 4044211064037 | 1 ST |

##INVERSE##CONTA-BOX

Mounting plate, Material: Hard laminated paper, Colour: Brown

| Article number | Article name | GTIN (EAN) | Packaging unit |
|----------------|---------------|---------------|----------------|
| <u>4505.6</u> | MP/M-T/200/12 | 4044211063832 | 1 ST |
