



### Technical data

#### Dimensions

Length	200 mm
Width	150 mm
Height	75 mm

#### Materials

Material	ABS
Lid material	ABS
Lid colour	Light grey
Lid screws	Stainless steel
Flammability class UL 94	HB
Working temperature, min.	-40 °C
Working temperature, max.	60 °C
Sealing material	Chloroprene
Cadmium-free	✓
Halogen-free	✓

#### Further technical data

Degree of protection	IP66
Protection class	II
Impact resistance	IK08
Self-tapping mounting screws for indoor installations	✓
Dielectric strength	24 kV/mm
Surface resistance	4x10 <sup>14</sup> Ohm

#### Environmental Product Compliance

REACH Conform	yes
REACH Reference date	2024-01-23
REACH Candidate Substance Note	No
RoHS Conform	yes

# Data sheet

## 4090.3 CT 200/15



---

### Media

---

### Accessories

#### Outer joints

Outer joints, Colour: Light grey

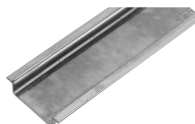
Article number	Article name	GTIN (EAN)	Packaging unit
<u>4510.3</u>	AG/CT/CM (Paar)	4044211064044	1 ST

#### Mounting plate

Mounting plate, Material: Hard laminated paper, Colour: Brown

Article number	Article name	GTIN (EAN)	Packaging unit
<u>4505.8</u>	MP/M-T/200/15	4044211063849	1 ST

#### DIN rail section TS 35/7.5



DIN rail, slotted, Width: 35 mm, Height: 7.5 mm, Material: Steel, Colour: natural

Article number	Article name	GTIN (EAN)	Packaging unit
<u>4509.0</u>	TS 35/188 mm lang	4044211152741	1 ST

#### Wall brackets

Wall brackets, Material: Polycarbonate, Colour: Grey

Article number	Article name	GTIN (EAN)	Packaging unit
<u>4510.2</u>	WL/CM/CT	4044211064037	1 ST

##INVERSE##CONTA-BOX

# Data sheet

## 4090.3 CT 200/15

---

Mounting plate, Material: Hard laminated paper, Colour: Brown

Article number	Article name	GTIN (EAN)	Packaging unit
<u>4505.8</u>	MP/M-T/200/15	4044211063849	1 ST

---