



Polystyrene housing without metric knock-outs, Colour: Grey, RAL: Similar to 7035, Cover: Polystyrene, Grey

RAL: Ähnlich 7035

Business data

| | |
|--|---------------------|
| Article number | 4249.3 |
| Article name | CK 1809/57 OV |
| GTIN (EAN) | 4044211062705 |
| Packaging unit | 20 |
| Quantity unit | PC |
| Weight per piece (not including packaging) | 201.7 g |
| Weight per piece (including packaging) | 201.71 g |
| Unit of weight | G |
| Customs number | 39269097 |
| Country of origin | DE |
| Product description | Polystyrene housing |
| Colour | Grey |

Technical data

Dimensions

| | |
|--------|--------|
| Length | 180 mm |
| Width | 94 mm |
| Height | 57 mm |

Materials

| | |
|---|------------------------------------|
| Material | Polystyrene |
| Lid material | Polystyrene |
| Lid colour | Grey |
| Lid screws | Glass-fibre reinforced polyamide 6 |
| Flammability class UL 94 | HB |
| Flammability acc. EN 60695 | 650 ° C |
| Working temperature, min. | -25 °C |
| Working temperature, max. | 40 °C |
| Sealing material | Polyurethane |
| Ambient temperature 24 hours | 35 °C |
| Rel. humidity at 40 °C, max. | 50 % |
| Short-term rel. humidity at 25 °C, max. | 95 % |
| Halogen-free | ✓ |
| PVC-free | ✓ |
| No heavy metals | ✓ |
| Silicone-free | ✓ |

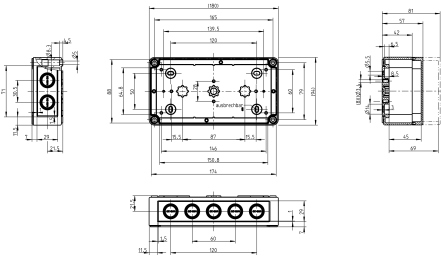
Further technical data

| | |
|-----------------------------|--------|
| Degree of protection | IP66 |
| Protection class | II |
| Impact resistance | IK07 |
| Rated insulation voltage AC | 690 V |
| Rated insulation voltage DC | 1000 V |
| Cable entries | ✓ |
| Can be lead-sealed | ✓ |

Environmental Product Compliance

| | |
|--------------------------------|------------|
| REACH Conform | yes |
| REACH Reference date | 2024-01-23 |
| REACH Candidate Substance Note | No |
| RoHS Conform | yes |

Media



Accessories

Outer joints



Outer joints, Colour: Grey

| Article number | Article name | GTIN (EAN) | Packaging unit |
|----------------|------------------|---------------|----------------|
| <u>4512.2</u> | AG/CK 77-CK 1809 | 4044211064235 | 2 ST |

Mounting plate



Mounting plate, Material: Hard laminated paper, Surface: Melamine laminated, Colour: Grey, RAL: 7035

| Article number | Article name | GTIN (EAN) | Packaging unit |
|----------------|--------------|---------------|----------------|
| <u>4511.6</u> | MP/CK 1809 | 4044211064174 | 1 ST |

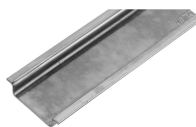
DIN rail section TS 15/5.5



DIN rail, slotted, Width: 15 mm, Height: 5.5 mm, Material: Steel, Colour: natural

| Article number | Article name | GTIN (EAN) | Packaging unit |
|----------------|-------------------|---------------|----------------|
| <u>4559.6</u> | TS 15/147 mm lang | 4044211065157 | 1 ST |

DIN rail section TS 35/7.5



DIN rail, slotted, Width: 35 mm, Height: 7.5 mm, Material: Steel, Colour: natural

| Article number | Article name | GTIN (EAN) | Packaging unit |
|----------------|-------------------|---------------|----------------|
| <u>4507.4</u> | TS 35/144 mm lang | 4044211152581 | 1 ST |

Wall brackets

4249.3 CK 1809/57 OV



Wall brackets, Material: Hard laminated paper, Melamine laminated, Colour: natural

| Article number | Article name | GTIN (EAN) | Packaging unit |
|----------------|--------------|---------------|----------------|
| <u>4512.1</u> | WL/CK | 4044211064228 | 1 ST |

##INVERSE##CONTA-BOX



Mounting plate, Material: Hard laminated paper, Surface: Melamine laminated, Colour: Grey, RAL: 7035

| Article number | Article name | GTIN (EAN) | Packaging unit |
|----------------|--------------|---------------|----------------|
| <u>4511.6</u> | MP/CK 1809 | 4044211064174 | 1 ST |