



Polystyrene housing, Colour: Grey, RAL: Similar to 7035, Cover: Polycarbonate, Transparent

RAL: 7035

Business data

Article number	<u>4329.3</u>
Article name	CK 1111/66 MVT
GTIN (EAN)	4044211111847
Packaging unit	21
Quantity unit	PC
Weight per piece (not including packaging)	181 g
Weight per piece (including packaging)	181.01 g
Unit of weight	G
Customs number	39269097
Country of origin	DE
Product description	Polystyrene housing
Colour	Grey

Technical data

Dimensions

Length	110 mm
Width	110 mm
Height	66 mm

Materials

Material	Polystyrene
Lid material	Polycarbonate
Lid colour	Transparent
Lid screws	Glass-fibre reinforced polyamide 6
Flammability class UL 94	HB
Flammability acc. EN 60695	650 ° C
Working temperature, min.	-25 °C
Working temperature, max.	40 °C
Sealing material	Polyurethane
Ambient temperature 24 hours	35 °C
Rel. humidity at 40 °C, max.	50 %
Short-term rel. humidity at 25 °C, max.	95 %
Halogen-free	✓
PVC-free	✓
No heavy metals	✓
Silicone-free	✓

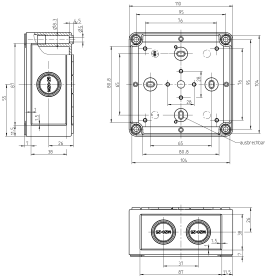
Further technical data

Degree of protection	IP66
Protection class	II
Impact resistance	IK07
Rated insulation voltage AC	690 V
Rated insulation voltage DC	1000 V
Cable entries	✓
Can be lead-sealed	✓

Environmental Product Compliance

REACH Conform	yes
REACH Reference date	2024-01-23
REACH Candidate Substance Note	No
RoHS Conform	yes

Media



Accessories

Outer joints



Outer joints, Colour: Grey

Article number	Article name	GTIN (EAN)	Packaging unit
<u>4512.2</u>	AG/CK 77-CK 1809	4044211064235	2 ST

Mounting plate



Mounting plate, Material: Hard laminated paper, Surface: Melamine laminated, Colour: Grey, RAL: 7035

Article number	Article name	GTIN (EAN)	Packaging unit
<u>4511.3</u>	MP/CK 1111	4044211064143	1 ST

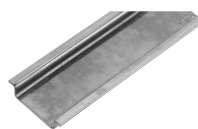
DIN rail section TS 15/5.5



DIN rail, slotted, Width: 15 mm, Height: 5.5 mm, Material: Steel, Colour: natural

Article number	Article name	GTIN (EAN)	Packaging unit
<u>4559.2</u>	TS 15/87 mm lang	4044211065119	1 ST

DIN rail section TS 35/7.5



DIN rail, slotted, Width: 35 mm, Height: 7.5 mm, Material: Steel, Colour: natural

Article number	Article name	GTIN (EAN)	Packaging unit
<u>4559.3</u>	TS 35/87 mm lang	4044211065126	1 ST

Wall brackets

4329.3 CK 1111/66 MVT



Wall brackets, Material: Hard laminated paper, Melamine laminated, Colour: natural

Article number	Article name	GTIN (EAN)	Packaging unit
<u>4512.1</u>	WL/CK	4044211064228	1 ST

##INVERSE##CONTA-BOX



Mounting plate, Material: Hard laminated paper, Surface: Melamine laminated, Colour: Grey, RAL: 7035

Article number	Article name	GTIN (EAN)	Packaging unit
<u>4511.3</u>	MP/CK 1111	4044211064143	1 ST