



Polystyrene housing, Colour: Grey, RAL: Similar to 7035, Cover: Polystyrene, Grey

**RAL:** Ähnlich 7035

### Business data

Article number	<u>4360.3</u>
Article name	CK 2518/90 MV
GTIN (EAN)	4044211116781
Packaging unit	8
Quantity unit	PC
Weight per piece (not including packaging)	543.99 g
Weight per piece (including packaging)	544 g
Unit of weight	G
Customs number	39269097
Country of origin	DE
Product description	Polystyrene housing
Colour	Grey

### Technical data

#### Dimensions

Length	254 mm
Width	180 mm
Height	90 mm

#### Materials

Material	Polystyrene
Lid material	Polystyrene
Lid colour	Grey
Lid screws	Glass-fibre reinforced polyamide 6
Flammability class UL 94	HB
Flammability acc. EN 60695	650 ° C
Working temperature, min.	-25 °C
Working temperature, max.	40 °C
Sealing material	Polyurethane
Ambient temperature 24 hours	35 °C
Rel. humidity at 40 °C, max.	50 %
Short-term rel. humidity at 25 °C, max.	95 %
Halogen-free	✓
PVC-free	✓
No heavy metals	✓
Silicone-free	✓

#### Further technical data

Degree of protection	IP66
Protection class	II
Impact resistance	IK07
Rated insulation voltage AC	690 V
Rated insulation voltage DC	1000 V
Cable entries	✓
Can be lead-sealed	✓

#### Environmental Product Compliance

REACH Conform	yes
REACH Reference date	2024-01-23
REACH Candidate Substance Note	No
RoHS Conform	yes



### Accessories

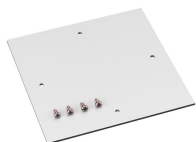
#### Outer joints



Outer joints, Colour: Grey

Article number	Article name	GTIN (EAN)	Packaging unit
<u>4512.3</u>	AG/CK 1811-CK 3625	4044211064242	1 ST

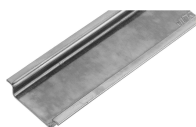
#### Mounting plate



Mounting plate, Material: Hard laminated paper, Surface: Melamine laminated, Colour: Grey, RAL: 7035

Article number	Article name	GTIN (EAN)	Packaging unit
<u>4511.9</u>	MP/CK 2518	4044211064204	1 ST

#### DIN rail section TS 35/7.5



DIN rail, slotted, Width: 35 mm, Height: 7.5 mm, Material: Steel, Colour: natural

Article number	Article name	GTIN (EAN)	Packaging unit
<u>4507.4</u>	TS 35/144 mm lang	4044211152581	1 ST

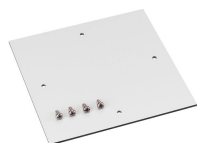
#### Wall brackets



Wall brackets, Material: Hard laminated paper, Melamine laminated, Colour: natural

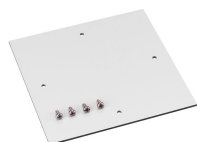
Article number	Article name	GTIN (EAN)	Packaging unit
<u>4512.1</u>	WL/CK	4044211064228	1 ST

#### ##INVERSE##CONTA-BOX



Mounting plate, Material: Hard laminated paper, Surface: Melamine laminated, Colour: Grey, RAL: 7035

Article number	Article name	GTIN (EAN)	Packaging unit
<u>4511.9</u>	MP/CK 2518	4044211064204	1 ST



Mounting plate, Material: Hard laminated paper, Surface: Melamine laminated, Colour: Grey, RAL: 7035

Article number	Article name	GTIN (EAN)	Packaging unit
<u>4512.0</u>	MP/CK 3625	4044211064211	1 ST