



Polystyrene housing, Colour: Grey, RAL: Similar to 7035, Cover: Polycarbonate, Transparent

RAL: Ähnlich 7035

Business data

Article number	<u>4363.3</u>
Article name	CK 2518/111 MVT
GTIN (EAN)	4044211116811
Packaging unit	6
Quantity unit	PC
Weight per piece (not including packaging)	700 g
Weight per piece (including packaging)	700.01 g
Unit of weight	G
Customs number	39269097
Country of origin	DE
Product description	Polystyrene housing
Colour	Grey

Technical data

Dimensions

Length	254 mm
Width	180 mm
Height	111 mm

Materials

Material	Polystyrene
Lid material	Polycarbonate
Lid colour	Transparent
Lid screws	Glass-fibre reinforced polyamide 6
Flammability class UL 94	HB
Flammability acc. EN 60695	650 ° C
Working temperature, min.	-25 °C
Working temperature, max.	40 °C
Sealing material	Polyurethane
Ambient temperature 24 hours	35 °C
Rel. humidity at 40 °C, max.	50 %
Short-term rel. humidity at 25 °C, max.	95 %
Halogen-free	✓
PVC-free	✓
No heavy metals	✓
Silicone-free	✓

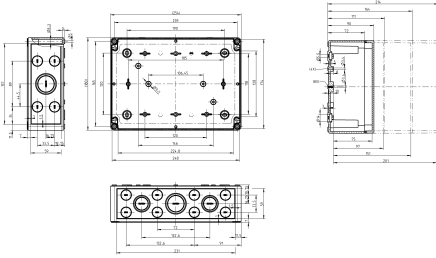
Further technical data

Degree of protection	IP66
Protection class	II
Impact resistance	IK07
Rated insulation voltage AC	690 V
Rated insulation voltage DC	1000 V
Cable entries	✓
Can be lead-sealed	✓

Environmental Product Compliance

REACH Conform	yes
REACH Reference date	2024-01-23
REACH Candidate Substance Note	No
RoHS Conform	yes

Media



Accessories

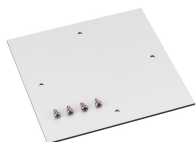
Outer joints



Outer joints, Colour: Grey

Article number	Article name	GTIN (EAN)	Packaging unit
<u>4512.3</u>	AG/CK 1811-CK 3625	4044211064242	1 ST

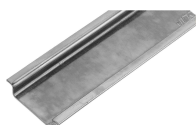
Mounting plate



Mounting plate, Material: Hard laminated paper, Surface: Melamine laminated, Colour: Grey, RAL: 7035

Article number	Article name	GTIN (EAN)	Packaging unit
<u>4511.9</u>	MP/CK 2518	4044211064204	1 ST

DIN rail section TS 35/7.5



DIN rail, slotted, Width: 35 mm, Height: 7.5 mm, Material: Steel, Colour: natural

Article number	Article name	GTIN (EAN)	Packaging unit
<u>4507.4</u>	TS 35/144 mm lang	4044211152581	1 ST

Wall brackets

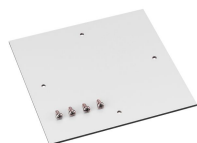


Wall brackets, Material: Hard laminated paper, Melamine laminated, Colour: natural

Article number	Article name	GTIN (EAN)	Packaging unit
<u>4512.1</u>	WL/CK	4044211064228	1 ST

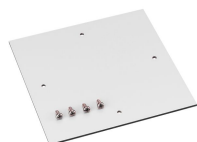
##INVERSE##CONTA-BOX

4363.3 CK 2518/111 MVT



Mounting plate, Material: Hard laminated paper, Surface: Melamine laminated, Colour: Grey, RAL: 7035

Article number	Article name	GTIN (EAN)	Packaging unit
<u>4511.9</u>	MP/CK 2518	4044211064204	1 ST



Mounting plate, Material: Hard laminated paper, Surface: Melamine laminated, Colour: Grey, RAL: 7035

Article number	Article name	GTIN (EAN)	Packaging unit
<u>4512.0</u>	MP/CK 3625	4044211064211	1 ST