



Glass-fibre reinforced polycarbonate housing, Colour: Grey, RAL: Similar to 7035, Cover: Polycarbonate, Transparent

**RAL:** Ähnlich 7035

### Business data

|  |                       |
|--|-----------------------|
| Article number                             | 4399.2                |
| Article name                               | CK-PC 1809/81 MVT     |
| GTIN (EAN)                                 | 4044211117177         |
| Packaging unit                             | 14                    |
| Quantity unit                              | PC                    |
| Weight per piece (not including packaging) | 277 g                 |
| Weight per piece (including packaging)     | 277.01 g              |
| Unit of weight                             | G                     |
| Customs number                             | 39269097              |
| Country of origin                          | EU                    |
| Product description                        | Polycarbonate housing |
| Colour                                     | Grey                  |

### Technical data

#### Dimensions

|        |        |
|--------|--------|
| Length | 180 mm |
| Width  | 94 mm  |
| Height | 81 mm  |

#### Materials

|   |                                     |
|---|-------------------------------------|
| Material                                | Polycarbonate                       |
| Lid material                            | Polycarbonate                       |
| Lid colour                              | Transparent                         |
| Lid screws                              | Polyamide 6, glass-fibre reinforced |
| Glass-fibre reinforced                  | ✓                                   |
| Flammability class UL 94                | V-2                                 |
| Flammability acc. EN 60695              | 960 ° C                             |
| Working temperature, min.               | -35 °C                              |
| Working temperature, max.               | 80 °C                               |
| Sealing material                        | Polyurethane                        |
| Ambient temperature 24 hours            | 60 °C                               |
| Rel. humidity at 40 °C, max.            | 50 %                                |
| Short-term rel. humidity at 25 °C, max. | 95 %                                |
| Halogen-free                            | ✓                                   |
| PVC-free                                | ✓                                   |
| No heavy metals                         | ✓                                   |
| Silicone-free                           | ✓                                   |
| Weather resistant                       | ✓                                   |

#### Further technical data

|                             |        |
|-----------------------------|--------|
| Degree of protection        | IP66   |
| Protection class            | II     |
| Impact resistance           | IK08   |
| Rated insulation voltage AC | 1000 V |
| Rated insulation voltage DC | 690 V  |
| Cable entries               | ✓      |
| Can be lead-sealed          | ✓      |
| Metric knock-outs           | ✓      |

---

### Technical data

---

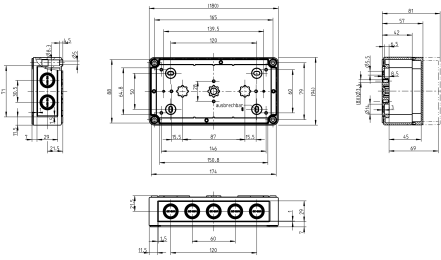
#### Environmental Product Compliance

---

|                                |            |
|--------------------------------|------------|
| REACH Conform                  | yes        |
| REACH Reference date           | 2024-01-23 |
| REACH Candidate Substance Note | No         |
| RoHS Conform                   | yes        |

---

### Media



### Accessories

#### Outer joints



Outer joints, Colour: Grey

| Article number | Article name     | GTIN (EAN)    | Packaging unit |
|----------------|------------------|---------------|----------------|
| <u>4512.2</u>  | AG/CK 77-CK 1809 | 4044211064235 | 2 ST           |

#### Mounting plate



Mounting plate, Material: Hard laminated paper, Surface: Melamine laminated, Colour: Grey, RAL: 7035

| Article number | Article name | GTIN (EAN)    | Packaging unit |
|----------------|--------------|---------------|----------------|
| <u>4511.6</u>  | MP/CK 1809   | 4044211064174 | 1 ST           |

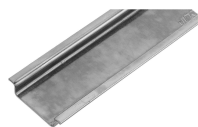
#### DIN rail section TS 15/5.5



DIN rail, slotted, Width: 15 mm, Height: 5.5 mm, Material: Steel, Colour: natural

| Article number | Article name      | GTIN (EAN)    | Packaging unit |
|----------------|-------------------|---------------|----------------|
| <u>4559.6</u>  | TS 15/147 mm lang | 4044211065157 | 1 ST           |

#### DIN rail section TS 35/7.5



DIN rail, slotted, Width: 35 mm, Height: 7.5 mm, Material: Steel, Colour: natural

| Article number | Article name      | GTIN (EAN)    | Packaging unit |
|----------------|-------------------|---------------|----------------|
| <u>4507.4</u>  | TS 35/144 mm lang | 4044211152581 | 1 ST           |

#### Wall brackets

## 4399.2 CK-PC 1809/81 MVT



Wall brackets, Material: Hard laminated paper, Melamine laminated, Colour: natural



| Article number | Article name | GTIN (EAN)    | Packaging unit |
|----------------|--------------|---------------|----------------|
| <u>4512.1</u>  | WL/CK        | 4044211064228 | 1 ST           |