

Technical data

Dimensions

Length	160 mm
Width	75 mm
Height	75 mm

Materials

Material	Duro-plastic polyester
Lid material	Duro-plastic polyester
Lid colour	Squirrel grey (RAL 7000)
Lid screws	Stainless steel V2A
Glass-fibre reinforced	✓
Flammability class UL 94	V-0
Working temperature, min.	-40 °C
Working temperature, max.	100 °C
Sealing material	Chloroprene
Halogen-free	✓

Further technical data

Degree of protection	IP66
Protection class	II
Impact resistance	IK08
Dielectric strength	18 kV/mm
Surface resistance	>10 ¹² Ohm
Lower part with earthing screws	✓

Environmental Product Compliance

REACH Conform	yes
REACH Reference date	2024-01-23
REACH Candidate Substance Note	No
RoHS Conform	yes

Media

Accessories

Outer joints



Outer joints, Colour: Silver-grey

Article number	Article name	GTIN (EAN)	Packaging unit
<u>4509.6</u>	AG/CP/CA (Paar)	4044211063979	1 ST

Mounting screw



Mounting screw, M 4, Colour: natural

Article number	Article name	GTIN (EAN)	Packaging unit
<u>4557.0</u>	BS M 4x5	4044211065072	100 ST

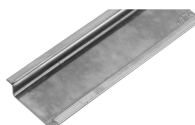
DIN rail section TS 15/5.5



DIN rail, slotted, Width: 15 mm, Height: 5.5 mm, Material: Steel, Colour: natural

Article number	Article name	GTIN (EAN)	Packaging unit
<u>4508.0</u>	TS 15/148 mm lang	4044211152642	1 ST

DIN rail section TS 35/7.5



DIN rail, slotted, Width: 35 mm, Height: 7.5 mm, Material: Steel, Colour: natural

Article number	Article name	GTIN (EAN)	Packaging unit
<u>4507.4</u>	TS 35/144 mm lang	4044211152581	1 ST

Wall brackets



Wall brackets, Material: Steel, Surface: Galvanized, Colour: natural

Article number	Article name	GTIN (EAN)	Packaging unit
<u>4509.3</u>	WL/CP/CA kurz	4044211063948	1 ST