

## 4508.1 TS 15/178 mm lang



DIN rail, slotted, Width: 15 mm, Height: 5.5 mm, Material: Steel, Colour: natural

### Business data

|  |                   |
|--|-------------------|
| Article number                             | 4508.1            |
| Article name                               | TS 15/178 mm lang |
| GTIN (EAN)                                 | 4044211152659     |
| Packaging unit                             | 1                 |
| Quantity unit                              | PC                |
| Weight per piece (not including packaging) | 28.48 g           |
| Weight per piece (including packaging)     | 28.48 g           |
| Unit of weight                             | G                 |
| Customs number                             | 72166190          |
| Country of origin                          | DE                |
| Prio-Article                               | 4508.0            |
| Product description                        | DIN rail          |
| Colour                                     | Natural           |

## 4508.1 TS 15/178 mm lang

---

### Technical data

---

#### Dimensions

|           |        |
|-----------|--------|
| Length    | 178 mm |
| Width     | 15 mm  |
| Height    | 5.5 mm |
| Thickness | 1 mm   |
| Slotted   | ✓      |

#### Materials

|          |                                   |
|----------|-----------------------------------|
| Material | Steel                             |
| Surface  | Galvanized, thick-film passivated |

#### Environmental Product Compliance

|                                |            |
|--------------------------------|------------|
| REACH Conform                  | yes        |
| REACH Reference date           | 2024-01-23 |
| REACH Candidate Substance Note | No         |
| RoHS Conform                   | yes        |

# Data sheet



4508.1 TS 15/178 mm lang

---

## Approvals

---

### Standards and regulations

---

Standards / specifications

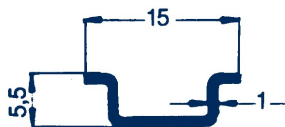
DIN EN 60715

---

---

### Media

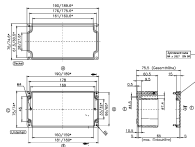
---



## 4508.1 TS 15/178 mm lang

### Accessories

#### ##INVERSE##CONTA-BOX



Glass-fibre reinforced polyester housing, Colour: Squirrel grey, RAL: 7000, Cover: Duroplastic polyester, Squirrel grey (RAL 7000)

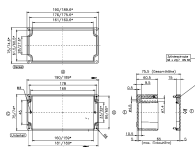
| Article number | Article name | GTIN (EAN)    | Packaging unit |
|----------------|--------------|---------------|----------------|
| <u>4436.1</u>  | CP 190/75    | 4044211114596 | 1 ST           |



Glass-fibre reinforced polyester housing, Colour: Squirrel grey, RAL: 7000, Cover: Duroplastic polyester, Squirrel grey (RAL 7000)

| Article number | Article name | GTIN (EAN)    | Packaging unit |
|----------------|--------------|---------------|----------------|
| <u>4023.1</u>  | CP 190/55    | 4044211061562 | 1 ST           |

#### ##INVERSE##CONTA-BOX



Glass-fibre reinforced polyester housing, Colour: Squirrel grey, RAL: 7000, Cover: Duroplastic polyester, Squirrel grey (RAL 7000)

| Article number | Article name | GTIN (EAN)    | Packaging unit |
|----------------|--------------|---------------|----------------|
| <u>4436.1</u>  | CP 190/75    | 4044211114596 | 1 ST           |