



DIN rail, slotted, Width: 15 mm, Height: 5.5 mm, Material: Steel, Colour: natural

Business data

Article number	<u>4510.8</u>
Article name	TS 15/110 mm lang
GTIN (EAN)	4044211064099
Packaging unit	1
Quantity unit	PC
Weight per piece (not including packaging)	17.6 g
Weight per piece (including packaging)	17.6 g
Unit of weight	G
Customs number	72166190
Country of origin	DE
Product description	DIN rail
Colour	Natural

4510.8 TS 15/110 mm lang

Technical data

Dimensions

Length	110 mm
Width	15 mm
Height	5.5 mm
Thickness	1 mm
Slotted	✓

Materials

Material	Steel
Surface	Galvanized, thick-film passivated

Environmental Product Compliance

REACH Conform	yes
REACH Reference date	2024-01-23
REACH Candidate Substance Note	No
RoHS Conform	yes

Data sheet

4510.8 TS 15/110 mm lang



Approvals

Standards and regulations

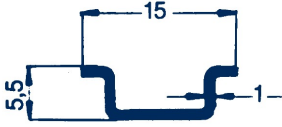
Standards / specifications

DIN EN 60715

Data sheet

4510.8 TS 15/110 mm lang

Media

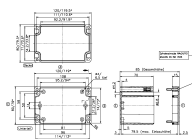


Data sheet

4510.8 TS 15/110 mm lang

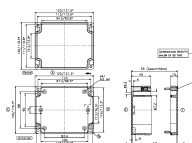
Accessories

##INVERSE##CONTA-BOX



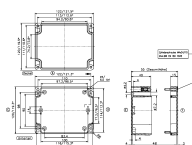
ABS housing, Colour: Light grey, RAL: 7035, Cover: ABS, Light grey

Article number	Article name	GTIN (EAN)	Packaging unit
<u>4084.3</u>	CT 120/8	4044211061975	1 ST



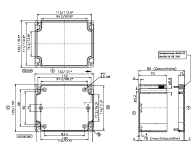
ABS housing, Colour: Light grey, RAL: 7035, Cover: ABS, Light grey

Article number	Article name	GTIN (EAN)	Packaging unit
<u>4087.3</u>	CT 122/5	4044211062002	1 ST



ABS housing, Colour: Light grey, RAL: 7035, Cover: ABS, Light grey

Article number	Article name	GTIN (EAN)	Packaging unit
<u>4087.3</u>	CT 122/5	4044211062002	1 ST



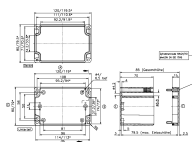
ABS housing, Colour: Light grey, RAL: 7035, Cover: ABS, Light grey

Article number	Article name	GTIN (EAN)	Packaging unit
<u>4088.3</u>	CT 122/8	4044211062019	1 ST



Aluminium housing, Surface: Powder-varnish coating, Colour: Silver-grey, RAL: 7001

Article number	Article name	GTIN (EAN)	Packaging unit
<u>4004.0</u>	CA 125/57	4044211061371	1 ST



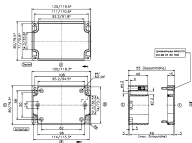
Polycarbonate housing, Colour: Light grey, RAL: 7035, Cover: Polycarbonate, Light grey

Article number	Article name	GTIN (EAN)	Packaging unit
<u>4044.2</u>	CM 120/8	4044211061692	1 ST

Data sheet

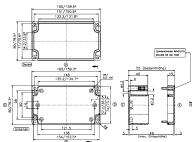
4510.8 TS 15/110 mm lang

##INVERSE##CONTA-BOX



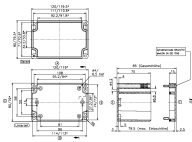
Polycarbonate housing, Colour: Light grey, RAL: 7035, Cover: Polycarbonate, Transparent

Article number	Article name	GTIN (EAN)	Packaging unit
<u>4063.2</u>	CM 120/5 DT	4044211061821	1 ST



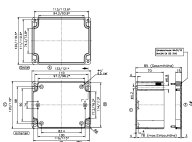
Polycarbonate housing, Colour: Light grey, RAL: 7035, Cover: Polycarbonate, Transparent

Article number	Article name	GTIN (EAN)	Packaging unit
<u>4065.2</u>	CM 160/5 DT	4044211061845	1 ST



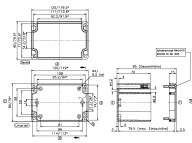
Polycarbonate housing, Colour: Light grey, RAL: 7035, Cover: Polycarbonate, Transparent

Article number	Article name	GTIN (EAN)	Packaging unit
<u>4064.2</u>	CM 120/8 DT	4044211061838	1 ST



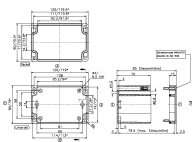
Polycarbonate housing, Colour: Light grey, RAL: 7035, Cover: Polycarbonate, Transparent

Article number	Article name	GTIN (EAN)	Packaging unit
<u>4068.2</u>	CM 122/8 DT	4044211061876	1 ST



Polycarbonate housing, Colour: Light grey, RAL: 7035, Cover: Polycarbonate, Light grey

Article number	Article name	GTIN (EAN)	Packaging unit
<u>4044.2</u>	CM 120/8	4044211061692	1 ST



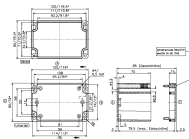
Polycarbonate housing, Colour: Light grey, RAL: 7035, Cover: Polycarbonate, Transparent

Article number	Article name	GTIN (EAN)	Packaging unit
<u>4064.2</u>	CM 120/8 DT	4044211061838	1 ST

Data sheet

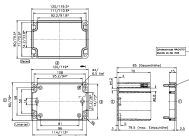
4510.8 TS 15/110 mm lang

##INVERSE##CONTA-BOX



Polycarbonate housing, Colour: Light grey, RAL: 7035, Cover: Polycarbonate, Transparent

Article number	Article name	GTIN (EAN)	Packaging unit
<u>4064.2</u>	CM 120/8 DT	4044211061838	1 ST



Polycarbonate housing, Colour: Light grey, RAL: 7035, Cover: Polycarbonate, Transparent

Article number	Article name	GTIN (EAN)	Packaging unit
<u>4064.2</u>	CM 120/8 DT	4044211061838	1 ST