

Data sheet

4557.0 BS M 4x5



Mounting screw, M 4, Colour: natural

Business data

Article number	4557.0
Article name	BS M 4x5
GTIN (EAN)	4044211065072
Packaging unit	100
Quantity unit	PC
Weight per piece (not including packaging)	1 g
Weight per piece (including packaging)	1.03 g
Unit of weight	G
Customs number	73181558
Country of origin	DE
Product description	Mounting screw
Colour	Natural

Data sheet

4557.0 BS M 4x5



Technical data

Dimensions

Length	5 mm
--------	------

Connection data

Screw head	Slotted
Screw threading	M 4
Tightening torque, min.	1.2 Nm
Tightening torque, max.	2 Nm

Further technical data

Mounting type	Screwable
---------------	-----------

Environmental Product Compliance

REACH Conform	yes
REACH Reference date	2023-06-14
REACH Candidate Substance Note	No
RoHS Conform	yes

Media



Accessories

##INVERSE##CONTA-BOX



Aluminium housing, Surface: Powder-varnish coating, Colour: Silver-grey, RAL: 7001

Article number	Article name	GTIN (EAN)	Packaging unit
<u>4004.0</u>	CA 125/57	4044211061371	1 ST



Aluminium housing, Surface: Powder-varnish coating, Colour: Silver-grey, RAL: 7001

Article number	Article name	GTIN (EAN)	Packaging unit
<u>4002.0</u>	CA 98/34	4044211061357	1 ST



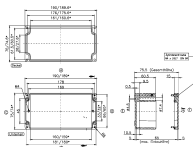
Aluminium housing, Surface: Powder-varnish coating, Colour: Silver-grey, RAL: 7001

Article number	Article name	GTIN (EAN)	Packaging unit
<u>4006.0</u>	CA 175/57	4044211061395	1 ST



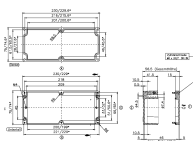
Aluminium housing, Surface: Powder-varnish coating, Colour: Silver-grey, RAL: 7001

Article number	Article name	GTIN (EAN)	Packaging unit
<u>4006.0</u>	CA 175/57	4044211061395	1 ST



Glass-fibre reinforced polyester housing, Colour: Squirrel grey, RAL: 7000, Cover: Duro-plastic polyester, Squirrel grey (RAL 7000)

Article number	Article name	GTIN (EAN)	Packaging unit
<u>4436.1</u>	CP 190/75	4044211114596	1 ST



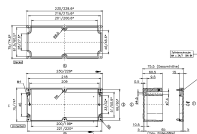
Glass-fibre reinforced polyester housing, Colour: Squirrel grey, RAL: 7000, Cover: Duro-plastic polyester, Squirrel grey (RAL 7000)

Article number	Article name	GTIN (EAN)	Packaging unit
<u>4437.1</u>	CP 230/55	4044211114602	1 ST

Data sheet

4557.0 BS M 4x5

##INVERSE##CONTA-BOX



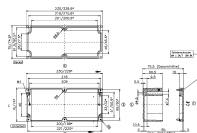
Glass-fibre reinforced polyester housing, Colour: Squirrel grey, RAL: 7000, Cover: Duro-plastic polyester, Squirrel grey (RAL 7000)

Article number	Article name	GTIN (EAN)	Packaging unit
<u>4198.1</u>	CP 230/75	4044211117450	1 ST



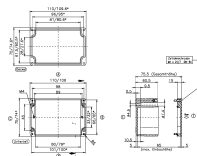
Glass-fibre reinforced polyester housing, Colour: Squirrel grey, RAL: 7000, Cover: Duro-plastic polyester, Squirrel grey (RAL 7000)

Article number	Article name	GTIN (EAN)	Packaging unit
<u>4023.1</u>	CP 190/55	4044211061562	1 ST



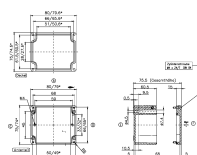
Glass-fibre reinforced polyester housing, Colour: Squirrel grey, RAL: 7000, Cover: Duro-plastic polyester, Squirrel grey (RAL 7000)

Article number	Article name	GTIN (EAN)	Packaging unit
<u>4198.1</u>	CP 230/75	4044211117450	1 ST



Glass-fibre reinforced polyester housing, Colour: Squirrel grey, RAL: 7000, Cover: Duro-plastic polyester, Squirrel grey (RAL 7000)

Article number	Article name	GTIN (EAN)	Packaging unit
<u>4434.1</u>	CP 110/75	4044211114572	1 ST



Glass-fibre reinforced polyester housing, Colour: Squirrel grey, RAL: 7000, Cover: Duro-plastic polyester, Squirrel grey (RAL 7000)

Article number	Article name	GTIN (EAN)	Packaging unit
<u>4439.1</u>	CP 80/75	4044211117443	1 ST



Glass-fibre reinforced polyester housing, Colour: Squirrel grey, RAL: 7000, Cover: Duro-plastic polyester, Squirrel grey (RAL 7000)

Article number	Article name	GTIN (EAN)	Packaging unit
<u>4021.1</u>	CP 110/55	4044211061548	1 ST

Data sheet

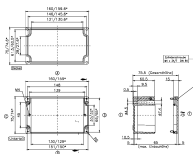
4557.0 BS M 4x5

##INVERSE##CONTA-BOX



Glass-fibre reinforced polyester housing, Colour: Squirrel grey, RAL: 7000, Cover: Duro-plastic polyester, Squirrel grey (RAL 7000)

Article number	Article name	GTIN (EAN)	Packaging unit
<u>4022.1</u>	CP 160/55	4044211061555	1 ST



Glass-fibre reinforced polyester housing, Colour: Squirrel grey, RAL: 7000, Cover: Duro-plastic polyester, Squirrel grey (RAL 7000)

Article number	Article name	GTIN (EAN)	Packaging unit
<u>4435.1</u>	CP 160/75	4044211114589	1 ST