

Digital switching module with manual-off-automatic switching, With feedback loop, Screw connection,
Mounting type: Mounting rail TS 35, 4 channels, Voltage: 24 VAC/DC

Business data

Article number	<u>6280.2</u>
Article name	IM4
GTIN (EAN)	4044211134327
Packaging unit	1
Quantity unit	PC
Weight per piece (not including packaging)	219 g
Weight per piece (including packaging)	277 g
Unit of weight	G
Customs number	85364900
Country of origin	NL
Product description	Digital switching module

Technical data

Ratings

Overvoltage category	III
Contamination degree	2

Connection data

Connection principle	Screw connection
Wire cross-section single core (rigid), min.	0.08 mm ²
Wire cross-section single-core (rigid), max.	4 mm ²
Wire cross-section stranded, min.	0.2 mm ²
Wire cross-section stranded, max.	2.5 mm ²
Wire cross-section stranded with wire-end ferrules, min.	0.2 mm ²
Wire cross-section stranded with wire-end ferrules, max.	2.5 mm ²
Stripping length	7 mm
Torque	0.6 Nm

Materials

Working temperature, min.	-20 °C
Working temperature, max.	50 °C

Further technical data

Protection class	IP20
------------------	------

Environmental Product Compliance

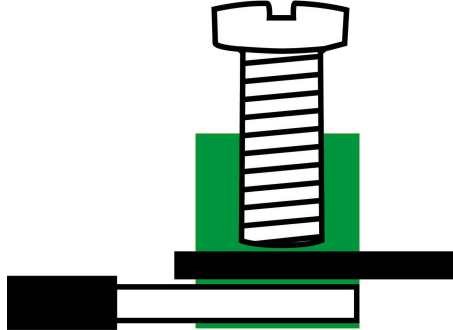
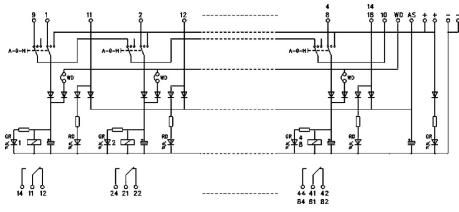
REACH Conform	yes
REACH Reference date	2024-01-23
REACH Candidate Substance Note	No
RoHS Conform	yes

Approvals

Standards and regulations

CE compliant	yes
Standards / specifications	DIN VDE 0110 / EN 50178

Media



Accessories
