



Plug-in miniature power relay, Encapsulated design with power contact, 1 CO contact, Input voltage: 24 VAC

Business data

Article number	<u>6480.2</u>
Article name	PRS 1/24V AC
GTIN (EAN)	4044211074197
Packaging unit	1
Quantity unit	PC
Weight per piece (not including packaging)	12.9 g
Weight per piece (including packaging)	14.73 g
Unit of weight	G
Customs number	85364900
Country of origin	AT
Product description	Relay, encapsulated construction

Data sheet

6480.2 PRS 1/24V AC

Technical data

Dimensions

Length	29 mm
Width	12.7 mm
Height	15.7 mm

Ratings

Overvoltage category	III
Contamination degree	3

Input data

Working voltage	>18 VAC -
Drop-out voltage	3,6 VAC
Coil voltage	24 VAC -
Power consumption	0,4 W
Coil resistance	350 Ohm

Output data

Switching voltage / switching voltage max.	250 / 400 VAC
Continuous current max. / Inrush current max.	12 / 25 A
Contact configuration	1 CO contact
Switching capacity, max.	3000 VA
Mechanical lifespan	10x10 ⁶
Bounce time at close of the NO/NC contact	4/6 ms

Materials

Contact material	AgNi 90/10
Working temperature, min.	-40 °C
Working temperature, max.	70 °C

Further technical data

Degree of protection	RTII
Insulation voltage coil/contact	5 kV
Insulation voltage contact/contact	1 kV
Vibration resistance NO/NC	20/5 g
Pinning	3.5 mm

Technical data

Environmental Product Compliance

REACH Conform	yes
REACH Reference date	2024-01-23
REACH Candidate Substance Note	No
RoHS Conform	yes

Data sheet

6480.2 PRS 1/24V AC



Approvals

Standards and regulations

CE compliant	yes
--------------	-----

Media

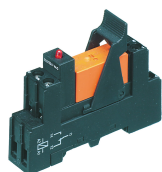
Accessories

##INVERSE##CONTA-ELECTRONICS



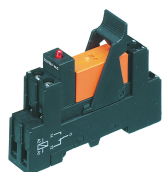
Relay socket base PRS, for miniature power relay with 1 CO contact, Tension-spring connection, Plug-in option for input/suppression modules, Mounting type: Mounting rail TS 35

Article number	Article name	GTIN (EAN)	Packaging unit
<u>15780.2</u>	PRS 1 Z	4044211135249	1 ST



Pre-assembled relay module PRS..., Screw connection, Consisting of: relay socket base, power contact relay, pluggable display/suppression module and holding clip, 1 CO contact, Input voltage: 24 VAC

Article number	Article name	GTIN (EAN)	Packaging unit
<u>15164.2</u>	PRSU 1/24V AC	4044211046439	1 ST



Pre-assembled relay module PRS..., Screw connection, Consisting of: relay socket base, power contact relay, pluggable display/suppression module and holding clip, 1 CO contact, Input voltage: 24 VAC

Article number	Article name	GTIN (EAN)	Packaging unit
<u>15164.2</u>	PRSU 1/24V AC	4044211046439	1 ST



Pre-assembled relay module PRS..., Tension-spring connection, Consisting of: relay socket base, power contact relay, pluggable display/suppression module and holding clip, 1 CO contact, Input voltage: 24 VAC

Article number	Article name	GTIN (EAN)	Packaging unit
<u>15785.2</u>	PRSU 1Z/24V AC	4044211135300	1 ST