



Plug-in miniature power relay, Encapsulated design with power contact, 1 CO contact, Input voltage: 230 VAC

### Business data

Article number	<u>6481.2</u>
Article name	PRS 1/230V AC
GTIN (EAN)	4044211074203
Packaging unit	1
Quantity unit	PC
Weight per piece (not including packaging)	13.1 g
Weight per piece (including packaging)	14.86 g
Unit of weight	G
Customs number	85364900
Country of origin	AT
Product description	Relay, encapsulated construction



### Technical data

#### Dimensions

Length	29 mm
Width	12.7 mm
Height	15.7 mm

#### Ratings

Overvoltage category	III
Contamination degree	3

#### Input data

Working voltage	>172,5 VAC -
Drop-out voltage	34,5 VAC
Coil voltage	230 VAC -
Power consumption	0,4 W
Coil resistance	32500 Ohm

#### Output data

Switching voltage / switching voltage max.	250 / 400 VAC
Continuous current max. / Inrush current max.	12 / 25 A
Contact configuration	1 CO contact
Switching capacity, max.	3000 VA
Mechanical lifespan	10x10 <sup>6</sup>
Bounce time at close of the NO/NC contact	4/6 ms

#### Materials

Contact material	AgNi 90/10
Working temperature, min.	-40 °C
Working temperature, max.	70 °C

#### Further technical data

Degree of protection	RTII
Insulation voltage coil/contact	5 kV
Insulation voltage contact/contact	1 kV
Vibration resistance NO/NC	20/5 g
Pinning	3.5 mm

---

### Technical data

---

#### Environmental Product Compliance

---

REACH Conform	yes
REACH Reference date	2024-01-23
REACH Candidate Substance Note	No
RoHS Conform	yes

---

# Data sheet

## 6481.2 PRS 1/230V AC



---

### Approvals

---

### Standards and regulations

---

CE compliant	yes
--------------	-----

---

---

### Media

---

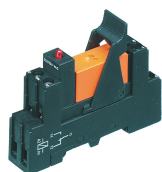
### Accessories

#### ##INVERSE##CONTA-ELECTRONICS



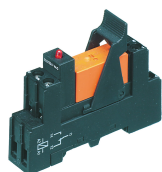
Relay socket base PRS, for miniature power relay with 1 CO contact, Tension-spring connection, Plug-in option for input/suppression modules, Mounting type: Mounting rail TS 35

Article number	Article name	GTIN (EAN)	Packaging unit
<u>15780.2</u>	PRS 1 Z	4044211135249	1 ST



Pre-assembled relay module PRS..., Screw connection, Consisting of: relay socket base, power contact relay, pluggable display/suppression module and holding clip, 1 CO contact, Input voltage: 230 VAC

Article number	Article name	GTIN (EAN)	Packaging unit
<u>15170.2</u>	PRSU 1/230V AC	4044211046477	10 ST



Pre-assembled relay module PRS..., Screw connection, Consisting of: relay socket base, power contact relay, pluggable display/suppression module and holding clip, 1 CO contact, Input voltage: 230 VAC

Article number	Article name	GTIN (EAN)	Packaging unit
<u>15170.2</u>	PRSU 1/230V AC	4044211046477	10 ST



Pre-assembled relay module PRS..., Tension-spring connection, Consisting of: relay socket base, power contact relay, pluggable display/suppression module and holding clip, 1 CO contact, Input voltage: 230 VAC

Article number	Article name	GTIN (EAN)	Packaging unit
<u>15787.2</u>	PRSU 1Z/230V AC	4044211135324	1 ST